


Product datasheet

Anti-MED30 / TRAP25 antibody ab49456

3 Images

Overview

Product name	Anti-MED30 / TRAP25 antibody
Description	Rabbit polyclonal to MED30 / TRAP25
Host species	Rabbit
Tested applications	Suitable for: ICC/IF, WB
Species reactivity	Reacts with: Human Predicted to work with: Cow, Dog, Chimpanzee 
Immunogen	Synthetic peptide conjugated to KLH derived from within residues 1 - 100 of Human MED30/TRAP25. Read Abcam's proprietary immunogen policy (Peptide available as ab71170 .)
Positive control	This antibody gave a positive signal in the following Human Lysates: HCT 116 Whole Cell HEK293 Whole Cell TE 671 Whole Cell This antibody gave a positive result when used in the following methanol fixed cell lines: HepG2
General notes	<p>The Life Science industry has been in the grips of a reproducibility crisis for a number of years. Abcam is leading the way in addressing this with our range of recombinant monoclonal antibodies and knockout edited cell lines for gold-standard validation. Please check that this product meets your needs before purchasing.</p> <p>If you have any questions, special requirements or concerns, please send us an inquiry and/or contact our Support team ahead of purchase. Recommended alternatives for this product can be found below, along with publications, customer reviews and Q&As</p>

Properties

Form	Liquid
Storage instructions	Shipped at 4°C. Store at +4°C short term (1-2 weeks). Upon delivery aliquot. Store at -20°C or -80°C. Avoid freeze / thaw cycle.
Storage buffer	pH: 7.40 Preservative: 0.02% Sodium azide Constituent: PBS

Batches of this product that have a concentration < 1mg/ml may have BSA added as a stabilising agent. If you would like information about the formulation of a specific lot, please contact our scientific support team who will be happy to help.

Purity	Immunogen affinity purified
Clonality	Polyclonal
Isotype	IgG

Applications

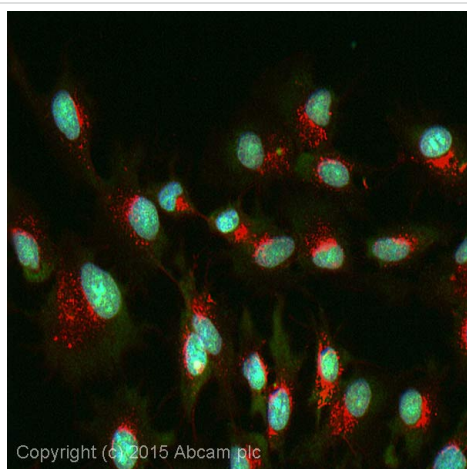
The Abpromise guarantee Our **Abpromise guarantee** covers the use of ab49456 in the following tested applications. The application notes include recommended starting dilutions; optimal dilutions/concentrations should be determined by the end user.

Application	Abreviews	Notes
ICC/IF		Use a concentration of 5 µg/ml.
WB		Use a concentration of 1 µg/ml. Detects a band of approximately 22 kDa (predicted molecular weight: 20 kDa).

Target

Function	Component of the Mediator complex, a coactivator involved in the regulated transcription of nearly all RNA polymerase II-dependent genes. Mediator functions as a bridge to convey information from gene-specific regulatory proteins to the basal RNA polymerase II transcription machinery. Mediator is recruited to promoters by direct interactions with regulatory proteins and serves as a scaffold for the assembly of a functional preinitiation complex with RNA polymerase II and the general transcription factors.
Tissue specificity	Expressed in brain, heart, kidney, liver, lung, pancreas, placenta and skeletal muscle.
Sequence similarities	Belongs to the Mediator complex subunit 30 family.
Cellular localization	Nucleus.

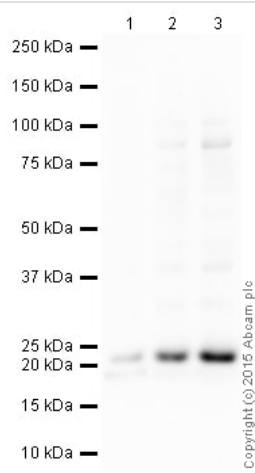
Images



Copyright (c) 2015 Abcam plc

Immunocytochemistry/ Immunofluorescence - Anti-MED30 / TRAP25 antibody (ab49456)

ICC/IF image of ab49456 stained HepG2 cells. The cells were 100% methanol fixed (5 min) then permeabilised using 0.1% PBS-Triton and then incubated in 1%BSA / 10% normal goat serum / 0.3M glycine in 0.1% PBS-Tween for 1h to further permeabilise the cells and block non-specific protein-protein interactions. The cells were then incubated with the antibody ab49456 at 1µg/ml overnight at +4°C. The secondary antibody (pseudo-colored green) was Alexa Fluor® 488 goat anti- rabbit (**ab150081**) IgG (H+L) preadsorbed, used at a 1/1000 dilution for 1h. Alexa Fluor® 594 WGA was used to label plasma membranes (pseudo-colored red) at a 1/200 dilution for 1h at room temperature. DAPI was used to stain the cell nuclei (pseudo-colored blue) at a concentration of 1.43µM for 1hour at room temperature.



Western blot - Anti-MED30 / TRAP25 antibody (ab49456)

All lanes : Anti-MED30 / TRAP25 antibody (ab49456) at 1 µg/ml

Lane 1 : HCT 116 (Human Colorectal Carcinoma) Whole Cell Lysate

Lane 2 : HEK293 (Human embryonic kidney cell line) Whole Cell Lysate

Lane 3 : TE 671 (Human Rhabdomyosarcoma) Whole Cell Lysate

Lysates/proteins at 10 µg per lane.

Secondary

All lanes : Goat polyclonal to Rabbit IgG - H&L - Pre-Adsorbed (HRP) at 1/50000 dilution

Developed using the ECL technique.

Performed under reducing conditions.

Predicted band size: 20 kDa

Observed band size: 22 kDa

Additional bands at: 19 kDa, 85 kDa. We are unsure as to the identity of these extra bands.

Exposure time: 8 minutes

This blot was produced using a 4-12% Bis-tris gel under the MES buffer system. The gel was run at 200V for 35 minutes before being transferred onto a Nitrocellulose membrane at 30V for 70 minutes. The membrane was then blocked for an hour using 2% Bovine Serum Albumin before being incubated with ab49456 overnight at 4°C. Antibody binding was detected using an anti-rabbit antibody conjugated to HRP, and visualised using ECL development solution **ab133406**.



Western blot - Anti-MED30 / TRAP25 antibody
(ab49456)

All lanes : Anti-MED30 / TRAP25 antibody (ab49456) at 1 µg/ml

Lane 1 : HCT 116 (Human Colorectal Carcinoma) Whole Cell
Lysate

Lane 2 : HEK293 (Human embryonic kidney cell line) Whole Cell
Lysate

Lane 3 : TE 671 (Human Rhabdomyosarcoma) Whole Cell Lysate

Lysates/proteins at 10 µg per lane.

Secondary

All lanes : Goat polyclonal to Rabbit IgG - H&L - Pre-Adsorbed
(HRP) at 1/3000 dilution

Developed using the ECL technique.

Performed under reducing conditions.

Predicted band size: 20 kDa

Observed band size: 19 kDa

Additional bands at: 250 kDa, 75 kDa. We are unsure as to the
identity of these extra bands.

Exposure time: 18 minutes

Please note: All products are "FOR RESEARCH USE ONLY. NOT FOR USE IN DIAGNOSTIC PROCEDURES"

Our Abpromise to you: Quality guaranteed and expert technical support

- Replacement or refund for products not performing as stated on the datasheet
- Valid for 12 months from date of delivery
- Response to your inquiry within 24 hours
- We provide support in Chinese, English, French, German, Japanese and Spanish
- Extensive multi-media technical resources to help you
- We investigate all quality concerns to ensure our products perform to the highest standards

If the product does not perform as described on this datasheet, we will offer a refund or replacement. For full details of the Abpromise, please visit <https://www.abcam.com/abpromise> or contact our technical team.

Terms and conditions

- Guarantee only valid for products bought direct from Abcam or one of our authorized distributors