

Product datasheet

Anti-MEIS1 antibody ab229962

★☆☆☆☆ [1 Abreviews](#) [3 Images](#)

Overview

Product name	Anti-MEIS1 antibody
Description	Rabbit polyclonal to MEIS1
Host species	Rabbit
Tested applications	Suitable for: WB, IP, IHC-P
Species reactivity	Reacts with: Mouse, Human
Immunogen	Recombinant fragment corresponding to Human MEIS1 aa 1-90. Database link: O00470
Positive control	WB: Jurkat, K562 and HeLa whole cell lysate (ab150035); Mouse skeletal muscle lysate. IHC-P: Human prostate cancer tissue. IP: K562 whole cell lysate.
General notes	<p>The Life Science industry has been in the grips of a reproducibility crisis for a number of years. Abcam is leading the way in addressing this with our range of recombinant monoclonal antibodies and knockout edited cell lines for gold-standard validation. Please check that this product meets your needs before purchasing.</p> <p>If you have any questions, special requirements or concerns, please send us an inquiry and/or contact our Support team ahead of purchase. Recommended alternatives for this product can be found below, along with publications, customer reviews and Q&As</p>

Properties

Form	Liquid
Storage instructions	Shipped at 4°C. Store at +4°C short term (1-2 weeks). Upon delivery aliquot. Store at -20°C long term. Avoid freeze / thaw cycle.
Storage buffer	pH: 7.40 Preservative: 0.03% Proclin 300 Constituents: 50% Glycerol (glycerin, glycerine), PBS
Purity	Protein G purified
Purification notes	Purity > 95%.
Clonality	Polyclonal
Isotype	IgG

Applications

The Abpromise guarantee

Our **Abpromise guarantee** covers the use of ab229962 in the following tested applications.

The application notes include recommended starting dilutions; optimal dilutions/concentrations should be determined by the end user.

Application	Abreviews	Notes
WB	★☆☆☆☆ (1)	1/2000 - 1/10000. Detects a band of approximately 44 kDa (predicted molecular weight: 43 kDa).
IP		1/200 - 1/2000.
IHC-P		1/20 - 1/200.

Target

Function

Acts as a transcriptional regulator of PAX6. Acts as a transcriptional activator of PF4 in complex with PBX1 or PBX2. Required for hematopoiesis, megakaryocyte lineage development and vascular patterning. May function as a cofactor for HOXA7 and HOXA9 in the induction of myeloid leukemias.

Tissue specificity

Expressed at low level in normal immunohepatopoietic tissues, including the fetal liver. Expressed in a subset of myeloid leukemia cell lines, with the highest expression seen in those with a megakaryocytic-erythroid phenotype. Also expressed at high levels in the cerebellum.

Involvement in disease

Defects in MEIS1 could be a cause of susceptibility to restless legs syndrome type 7 (RLS7) [MIM:612853]. Restless legs syndrome (RLS) is a neurologic sleep/wake disorder characterized by uncomfortable and unpleasant sensations in the legs that appear at rest, usually at night, inducing an irresistible desire to move the legs. The disorder results in nocturnal insomnia and chronic sleep deprivation.

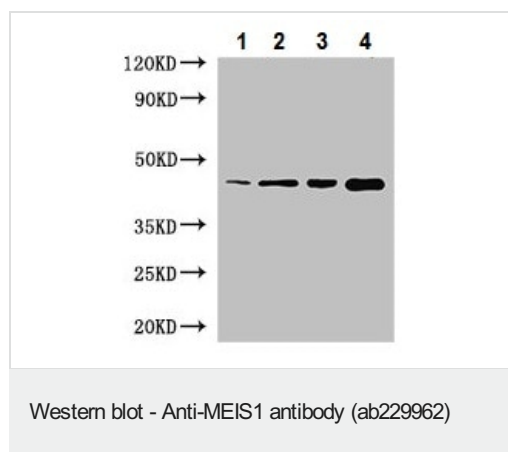
Sequence similarities

Belongs to the TALE/MEIS homeobox family.
Contains 1 homeobox DNA-binding domain.

Cellular localization

Nucleus.

Images



All lanes : Anti-MEIS1 antibody (ab229962) at 1/2000 dilution

Lane 1 : Jurkat (human T cell leukemia cell line from peripheral blood) whole cell lysate

Lane 2 : K562 (human chronic myelogenous leukemia cell line from bone marrow) whole cell lysate

Lane 3 : HeLa (human epithelial cell line from cervix adenocarcinoma) whole cell lysate

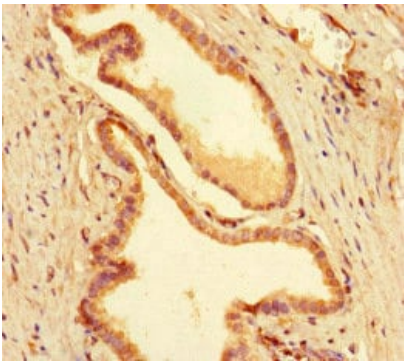
Lane 4 : Mouse skeletal muscle lysate

Secondary

All lanes : Goat polyclonal to rabbit IgG at 1/50000 dilution

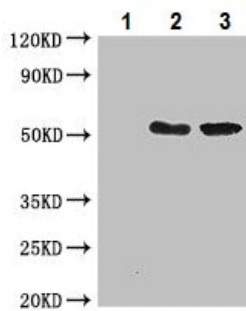
Predicted band size: 43 kDa

Observed band size: 44 kDa



Immunohistochemistry (Formalin/PFA-fixed paraffin-embedded sections) - Anti-MEIS1 antibody (ab229962)

Paraffin-embedded human prostate cancer tissue stained for MEIS1 using ab229962 at 1/100 dilution in immunohistochemical analysis.



Immunoprecipitation - Anti-MEIS1 antibody (ab229962)

MEIS1 was immunoprecipitated from 0.5 mg K562 (human chronic myelogenous leukemia cell line from bone marrow) whole cell lysate with 4 µg ab229962. Western blot was performed from the immunoprecipitate using ab229962. HRP-conjugated Protein G antibody was used as the secondary antibody at 1/50000 dilution.

Lane 1: 1 µg Rabbit monoclonal IgG instead of ab229962 in K562 whole cell lysate.

Lane 2: ab229962 IP in K562 whole cell lysate.

Lane 3: K562 whole cell lysate 20 µg (Input).

Please note: All products are "FOR RESEARCH USE ONLY. NOT FOR USE IN DIAGNOSTIC PROCEDURES"

Our Abpromise to you: Quality guaranteed and expert technical support

- Replacement or refund for products not performing as stated on the datasheet
- Valid for 12 months from date of delivery
- Response to your inquiry within 24 hours
- We provide support in Chinese, English, French, German, Japanese and Spanish
- Extensive multi-media technical resources to help you
- We investigate all quality concerns to ensure our products perform to the highest standards

If the product does not perform as described on this datasheet, we will offer a refund or replacement. For full details of the Abpromise, please visit <https://www.abcam.com/abpromise> or contact our technical team.

Terms and conditions

- Guarantee only valid for products bought direct from Abcam or one of our authorized distributors