

Product datasheet

Anti-MEKK3 antibody [ep600y] ab40756

Recombinant RabMAb

[9 References](#) [9 Images](#)

Overview

| | |
|----------------------------|--|
| Product name | Anti-MEKK3 antibody [ep600y] |
| Description | Rabbit monoclonal [ep600y] to MEKK3 |
| Host species | Rabbit |
| Tested applications | Suitable for: ICC/IF, IHC-P, Flow Cyt (Intra), WB, IP |
| Species reactivity | Reacts with: Mouse, Human |
| Immunogen | Synthetic peptide within Human MEKK3 aa 600-700 (C terminal). The exact sequence is proprietary. |
| Positive control | ICC: HeLa cells. IHC-P: Human ovary carcinoma. Flow Cyt (intra): HeLa and Raji cells. WB: Human MEKK3 full-length recombinant protein with GST-Tag, HeLa, bEnd.3, NIH/3T3 whole cell lysates. IP: bEnd.3 whole cell lysate. |
| General notes | <p>This product is a recombinant monoclonal antibody, which offers several advantages including:</p> <ul style="list-style-type: none"> - High batch-to-batch consistency and reproducibility - Improved sensitivity and specificity - Long-term security of supply - Animal-free production <p>For more information see here.</p> <p>Our RabMAb[®] technology is a patented hybridoma-based technology for making rabbit monoclonal antibodies. For details on our patents, please refer to RabMAb[®] patents.</p> <p>Mouse, Rat: We have preliminary internal testing data to indicate this antibody may not react with these species. Please contact us for more information.</p> |

Properties

| | |
|-----------------------------|--|
| Form | Liquid |
| Storage instructions | Shipped at 4°C. Upon delivery aliquot and store at -20°C. Avoid freeze / thaw cycles. |
| Storage buffer | <p>pH: 7.20</p> <p>Preservative: 0.01% Sodium azide</p> <p>Constituents: 59% PBS, 40% Glycerol (glycerin, glycerine), 0.5% BSA</p> |
| Purity | Protein A purified |

| | |
|---------------------|------------|
| Clonality | Monoclonal |
| Clone number | ep600y |
| Isotype | IgG |

Applications

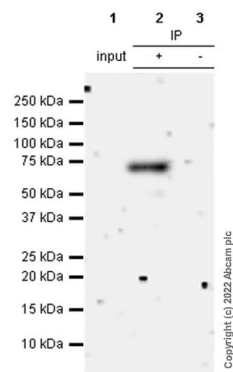
The Abpromise guarantee Our **Abpromise guarantee** covers the use of ab40756 in the following tested applications. The application notes include recommended starting dilutions; optimal dilutions/concentrations should be determined by the end user.

| Application | Abreviews | Notes |
|------------------|-----------|---|
| ICC/IF | | 1/100 - 1/250. |
| IHC-P | | Use at an assay dependent concentration. Perform heat mediated antigen retrieval with citrate buffer pH 6 before commencing with IHC staining protocol. |
| Flow Cyt (Intra) | | 1/100 - 1/1000. ab172730 - Rabbit monoclonal IgG, is suitable for use as an isotype control with this antibody. |
| WB | | 1/200 - 1/1000. Detects a band of approximately 70 kDa (predicted molecular weight: 71 kDa). |
| IP | | 1/20 - 1/30. |

Target

| | |
|------------------------------|--|
| Function | Component of a protein kinase signal transduction cascade. Mediates activation of the NF-kappa-B, AP1 and DDIT3 transcriptional regulators. |
| Sequence similarities | Belongs to the protein kinase superfamily. STE Ser/Thr protein kinase family. MAP kinase kinase kinase subfamily. Contains 1 OPR domain. Contains 1 protein kinase domain. |

Images



Immunoprecipitation - Anti-MEKK3 antibody
[ep600y] (ab40756)

71 kDa MEKK3 was immunoprecipitated from 0.35mg of bEnd.3 (mouse brain endothelial cell) whole cell lysate with ab40756 at 1/30 dilution. Western blot was performed from the immunoprecipitate using ab40756 at 1/200 dilution. VeriBlot for IP secondary antibody (HRP) ([ab131366](#)) was used at 1/5000 dilution.

Lane 1 (Input): bEnd.3 (mouse brain endothelial cell) whole cell lysate 10 µg.

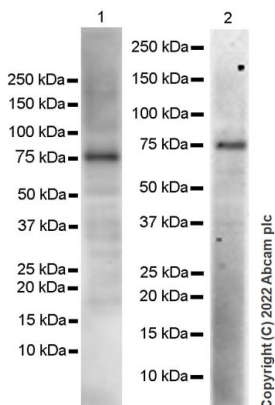
Lane 2 (+): bEnd.3 whole cell lysate.

Lane 3 (-): Rabbit monoclonal IgG ([ab172730](#)) instead of ab40756 in bEnd.3 whole cell lysate

Blocking buffer and concentration: 5% NFDM/TBST.

Diluting buffer and concentration: 5% NFDM/TBST.

Exposure time: 180 seconds.



Western blot - Anti-MEKK3 antibody [ep600y]
(ab40756)

All lanes : Anti-MEKK3 antibody [ep600y] (ab40756) at 1/200 dilution

Lane 1 : bEnd.3 (mouse brain endothelial cell) whole cell lysate

Lane 2 : NIH/3T3 (mouse embryonic fibroblast) whole cell lysate

Lysates/proteins at 20 µg per lane.

Secondary

All lanes : Goat Anti-Rabbit IgG H&L (HRP) ([ab97051](#)) at 1/20000 dilution

Predicted band size: 71 kDa

Observed band size: 71 kDa

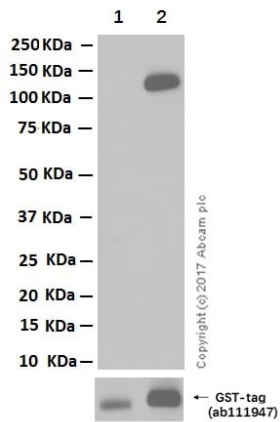
Blocking buffer and concentration: 5% NFDM/TBST.

Diluting buffer and concentration: 5% NFDM/TBST.

Exposure Time: Lane 1: 92 seconds, Lane 2: 180 seconds.

This blot was developed using a high sensitivity ECL substrate.

In lane 2, the lysate was freshly made and used for Western Blotting immediately to minimize protein degradation.



Western blot - Anti-MEKK3 antibody [ep600y] (ab40756)

All lanes : Anti-MEKK3 antibody [ep600y] (ab40756) at 1/1000 dilution

Lane 1 : Recombinant human MEKK2 protein ([ab135009](#))

Lane 2 : Recombinant human MEKK3 protein ([ab85297](#))

Lysates/proteins at 0.015 µg per lane.

Secondary

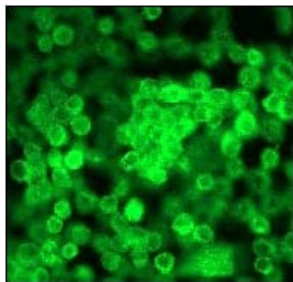
All lanes : Goat Anti-Rabbit IgG H&L (HRP) ([ab97051](#)) at 1/20000 dilution

Predicted band size: 71 kDa

Observed band size: 97 kDa

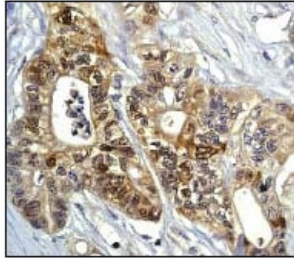
Exposure time: 3 minutes

Blocking and diluting buffer: 5% NFDM/TBST



Immunocytochemistry/ Immunofluorescence - Anti-MEKK3 antibody [ep600y] (ab40756)

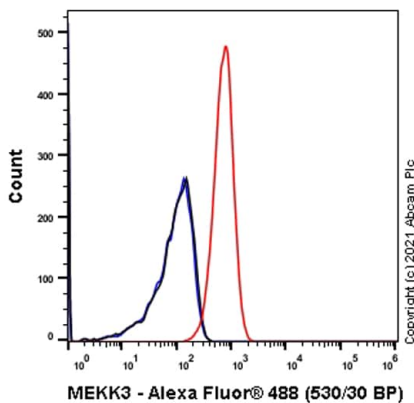
Immunofluorescent staining of HeLa cells using ab40756 diluted 1:100



Immunohistochemistry (Formalin/PFA-fixed paraffin-embedded sections) - Anti-MEKK3 antibody [ep600y] (ab40756)

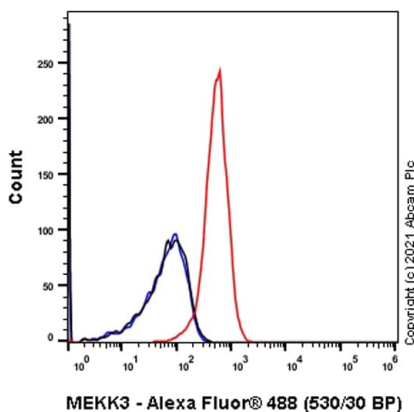
Immunohistochemical analysis of paraffin-embedded human ovary carcinoma using ab40756 diluted 1:100

Perform heat mediated antigen retrieval with citrate buffer pH 6 before commencing with IHC staining protocol.



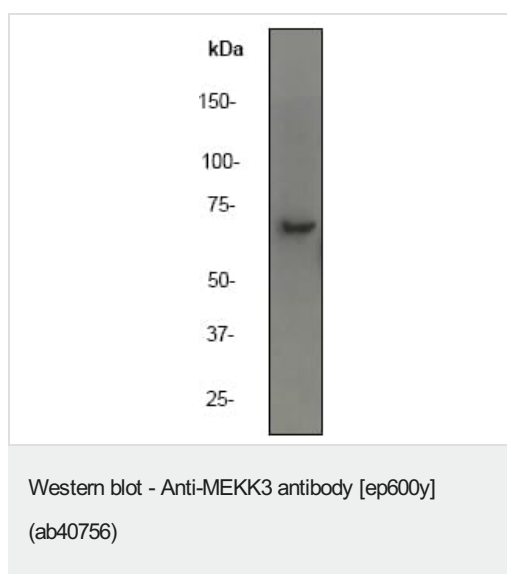
Flow Cytometry (Intracellular) - Anti-MEKK3 antibody [ep600y] (ab40756)

Flow Cytometry analysis of HeLa (Human cervix adenocarcinoma epithelial cell) cells labeling MEKK3 with purified ab40756 at 1/1000 dilution (1 µg/mL) (Red). Cells were fixed with 4% Paraformaldehyde and permeabilised with 90% Methanol. A Goat anti rabbit IgG (Alexa Fluor® 488, [ab150077](#)) secondary antibody was used at 1/2000. Isotype control - Rabbit monoclonal IgG (Black). Unlabeled control - Cell without incubation with primary antibody and secondary antibody (Blue).



Flow Cytometry (Intracellular) - Anti-MEKK3 antibody [ep600y] (ab40756)

Flow Cytometry analysis of Raji (Human Burkitt's lymphoma B lymphocyte) cells labeling MEKK3 with purified ab40756 at 1/100 dilution (10 µg/mL) (Red). Cells were fixed with 4% Paraformaldehyde and permeabilised with 90% Methanol. A Goat anti rabbit IgG (Alexa Fluor® 488, [ab150077](#)) secondary antibody was used at 1/2000. Isotype control - Rabbit monoclonal IgG (Black). Unlabeled control - Cell without incubation with primary antibody and secondary antibody (Blue).



Anti-MEKK3 antibody [ep600y] (ab40756) at 1/1000 dilution +
HeLa cell lysate at 10 µg

Predicted band size: 71 kDa

Observed band size: 70 kDa

Why choose a recombinant antibody?

| | |
|--|--|
| <p>Research with confidence Consistent and reproducible results</p> | <p>Long-term and scalable supply Recombinant technology</p> |
| <p>Success from the first experiment Confirmed specificity</p> | <p>Ethical standards compliant Animal-free production</p> |

Anti-MEKK3 antibody [ep600y] (ab40756)

Please note: All products are "FOR RESEARCH USE ONLY. NOT FOR USE IN DIAGNOSTIC PROCEDURES"

Our Abpromise to you: Quality guaranteed and expert technical support

- Replacement or refund for products not performing as stated on the datasheet
- Valid for 12 months from date of delivery
- Response to your inquiry within 24 hours
- We provide support in Chinese, English, French, German, Japanese and Spanish
- Extensive multi-media technical resources to help you
- We investigate all quality concerns to ensure our products perform to the highest standards

If the product does not perform as described on this datasheet, we will offer a refund or replacement. For full details of the Abpromise, please visit <https://www.abcam.com/abpromise> or contact our technical team.

Terms and conditions

- Guarantee only valid for products bought direct from Abcam or one of our authorized distributors