

Anti-MEKK3 antibody [ep600y] - BSA and Azide free ab239826

Recombinant RabMAb

7 Images

Overview

Product name	Anti-MEKK3 antibody [ep600y] - BSA and Azide free
Description	Rabbit monoclonal [ep600y] to MEKK3 - BSA and Azide free
Host species	Rabbit
Tested applications	Suitable for: Flow Cyt (Intra), ICC/IF, IHC-P, IP, WB
Species reactivity	Reacts with: Mouse, Human
Immunogen	Synthetic peptide. This information is proprietary to Abcam and/or its suppliers.
Positive control	ICC/IF: HeLa cells. IHC-P: Human ovary carcinoma. Flow Cyt (intra): HeLa and Raji cells. WB: bEnd.3, NIH/3T3 whole cell lysates. IP: bEnd.3 whole cell lysate.
General notes	<p>ab239826 is the carrier-free version of ab40756.</p> <p>Our carrier-free antibodies are typically supplied in a PBS-only formulation, purified and free of BSA, sodium azide and glycerol. The carrier-free buffer and high concentration allow for increased conjugation efficiency.</p> <p>This conjugation-ready format is designed for use with fluorochromes, metal isotopes, oligonucleotides, and enzymes, which makes them ideal for antibody labelling, functional and cell-based assays, flow-based assays (e.g. mass cytometry) and Multiplex Imaging applications.</p> <p>Use our conjugation kits for antibody conjugates that are ready-to-use in as little as 20 minutes with <1 minute hands-on-time and 100% antibody recovery: available for fluorescent dyes, HRP, biotin and gold.</p> <p>This product is compatible with the Maxpar[®] Antibody Labeling Kit from Fluidigm, without the need for antibody preparation. Maxpar[®] is a trademark of Fluidigm Canada Inc.</p> <p>This product is a recombinant monoclonal antibody, which offers several advantages including:</p> <ul style="list-style-type: none"> - High batch-to-batch consistency and reproducibility - Improved sensitivity and specificity - Long-term security of supply - Animal-free production <p>For more information see here.</p> <p>Our RabMAb[®] technology is a patented hybridoma-based technology for making rabbit monoclonal antibodies. For details on our patents, please refer to RabMAb[®] patents.</p>

Mouse, Rat: We have preliminary internal testing data to indicate this antibody may not react with these species. Please contact us for more information.

Properties

Form	Liquid
Storage instructions	Shipped at 4°C. Store at +4°C. Do Not Freeze.
Storage buffer	pH: 7.2 Constituent: PBS
Carrier free	Yes
Purity	Protein A purified
Clonality	Monoclonal
Clone number	ep600y
Isotype	IgG

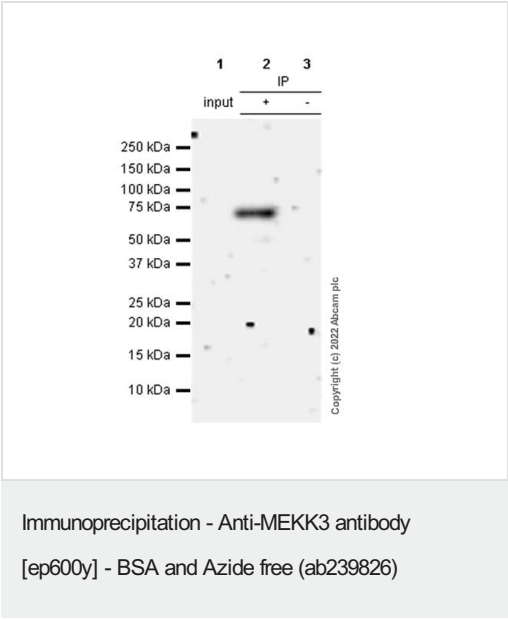
Applications

The Abpromise guarantee Our [Abpromise guarantee](#) covers the use of ab239826 in the following tested applications. The application notes include recommended starting dilutions; optimal dilutions/concentrations should be determined by the end user.

Application	Abreviews	Notes
Flow Cyt (Intra)		Use at an assay dependent concentration. ab199376 - Rabbit monoclonal IgG, is suitable for use as an isotype control with this antibody.
ICC/IF		Use at an assay dependent concentration.
IHC-P		Use at an assay dependent concentration. Perform heat mediated antigen retrieval with citrate buffer pH 6 before commencing with IHC staining protocol.
IP		Use at an assay dependent concentration.
WB		Use at an assay dependent concentration. Detects a band of approximately 70 kDa (predicted molecular weight: 71 kDa).

Target

Function	Component of a protein kinase signal transduction cascade. Mediates activation of the NF-kappa-B, AP1 and DDIT3 transcriptional regulators.
Sequence similarities	Belongs to the protein kinase superfamily. STE Ser/Thr protein kinase family. MAP kinase kinase kinase subfamily. Contains 1 OPR domain. Contains 1 protein kinase domain.



71 kDa MEKK3 was immunoprecipitated from 0.35mg of bEnd.3 (mouse brain endothelial cell) whole cell lysate with [ab40756](#) at 1/30 dilution. Western blot was performed from the immunoprecipitate using [ab40756](#) at 1/200 dilution. VeriBlot for IP secondary antibody (HRP) ([ab131366](#)) was used at 1/5000 dilution.

Lane 1 (Input): bEnd.3 (mouse brain endothelial cell) whole cell lysate 10 µg.

Lane 2 (+): bEnd.3 whole cell lysate.

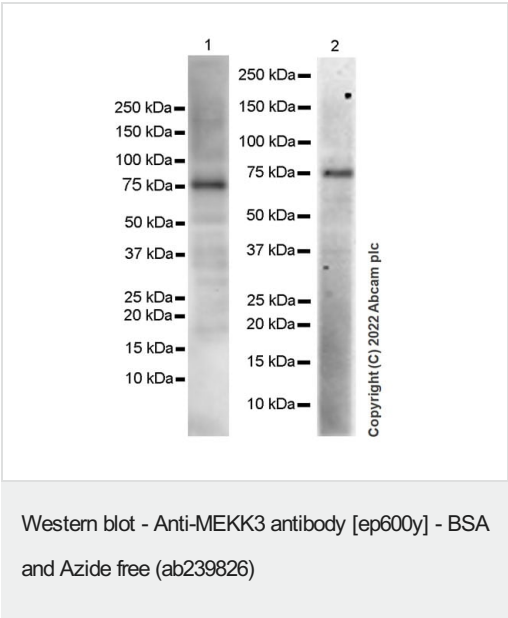
Lane 3 (-): Rabbit monoclonal IgG ([ab172730](#)) instead of [ab40756](#) in bEnd.3 whole cell lysate

Blocking buffer and concentration: 5% NFDm/TBST.

Diluting buffer and concentration: 5% NFDm/TBST.

Exposure time: 180 seconds.

This data was developed using the same antibody clone in a different buffer formulation containing PBS, BSA, glycerol, and sodium azide ([ab40756](#)).



All lanes : Anti-MEKK3 antibody [ep600y] ([ab40756](#)) at 1/200 dilution

Lane 1 : bEnd.3 (mouse brain endothelial cell) whole cell lysate

Lane 2 : NIH/3T3 (mouse embryonic fibroblast) whole cell lysate

Lysates/proteins at 20 µg per lane.

Secondary

All lanes : Goat Anti-Rabbit IgG H&L (HRP) ([ab97051](#)) at 1/20000 dilution

Predicted band size: 71 kDa

Observed band size: 71 kDa

Blocking buffer and concentration: 5% NFDm/TBST.

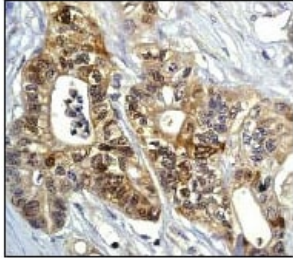
Diluting buffer and concentration: 5% NFDm/TBST.

Exposure Time: Lane 1: 92 seconds, Lane 2: 180 seconds.

This blot was developed using a high sensitivity ECL substrate.

In lane 2, the lysate was freshly made and used for Western Blotting immediately to minimize protein degradation.

This data was developed using the same antibody clone in a different buffer formulation containing PBS, BSA, glycerol, and sodium azide (**ab40756**).

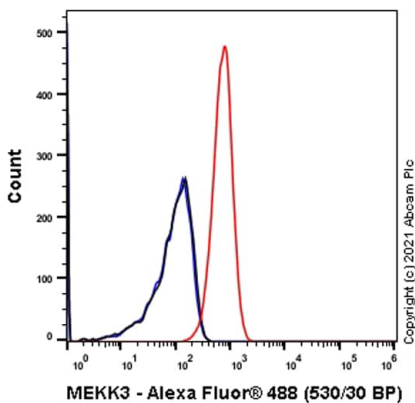


Immunohistochemistry (Formalin/PFA-fixed paraffin-embedded sections) - Anti-MEKK3 antibody [ep600y] - BSA and Azide free (ab239826)

Immunohistochemical analysis of paraffin-embedded human ovary carcinoma using **ab40756** diluted 1:100

This data was developed using the same antibody clone in a different buffer formulation containing PBS, BSA, glycerol, and sodium azide (**ab40756**).

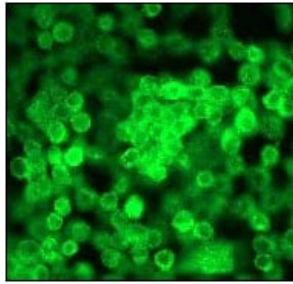
Perform heat mediated antigen retrieval with citrate buffer pH 6 before commencing with IHC staining protocol.



Flow Cytometry (Intracellular) - Anti-MEKK3 antibody [ep600y] - BSA and Azide free (ab239826)

This data was developed using **ab40756**, the same antibody clone in a different buffer formulation.

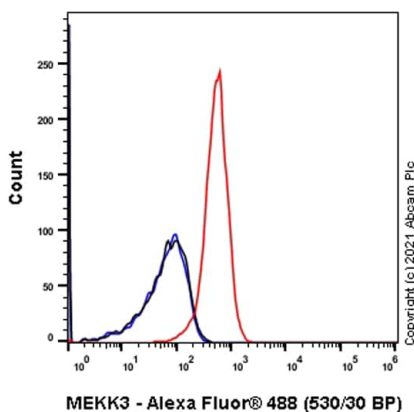
Flow Cytometry analysis of HeLa (Human cervix adenocarcinoma epithelial cell) cells labeling MEKK3 with purified **ab40756** at 1/1000 dilution (1 µg/mL) (Red). Cells were fixed with 4% Paraformaldehyde and permeabilised with 90% Methanol. A Goat anti rabbit IgG (Alexa Fluor® 488, **ab150077**) secondary antibody was used at 1/2000. Isotype control - Rabbit monoclonal IgG (Black). Unlabeled control - Cell without incubation with primary antibody and secondary antibody (Blue).



Immunocytochemistry/ Immunofluorescence - Anti-MEKK3 antibody [ep600y] - BSA and Azide free (ab239826)

Immunofluorescent staining of HeLa cells using **ab40756** diluted 1:100

This data was developed using the same antibody clone in a different buffer formulation containing PBS, BSA, glycerol, and sodium azide (**ab40756**).

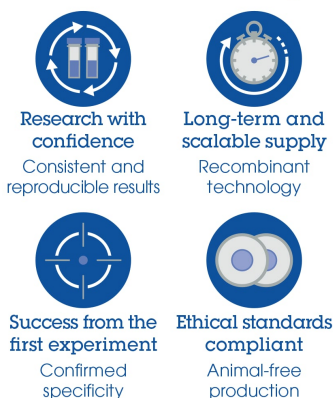


Flow Cytometry (Intracellular) - Anti-MEKK3 antibody [ep600y] - BSA and Azide free (ab239826)

This data was developed using **ab40756**, the same antibody clone in a different buffer formulation.

Flow Cytometry analysis of Raji (Human Burkitt's lymphoma B lymphocyte) cells labeling MEKK3 with purified **ab40756** at 1/100 dilution (10 µg/mL) (Red). Cells were fixed with 4% Paraformaldehyde and permeabilised with 90% Methanol. A Goat anti rabbit IgG (Alexa Fluor® 488, **ab150077**) secondary antibody was used at 1/2000. Isotype control - Rabbit monoclonal IgG (Black). Unlabeled control - Cell without incubation with primary antibody and secondary antibody (Blue).

Why choose a recombinant antibody?



Anti-MEKK3 antibody [ep600y] - BSA and Azide free (ab239826)

Please note: All products are "FOR RESEARCH USE ONLY. NOT FOR USE IN DIAGNOSTIC PROCEDURES"

Our Abpromise to you: Quality guaranteed and expert technical support

- Replacement or refund for products not performing as stated on the datasheet
- Valid for 12 months from date of delivery
- Response to your inquiry within 24 hours

- We provide support in Chinese, English, French, German, Japanese and Spanish
- Extensive multi-media technical resources to help you
- We investigate all quality concerns to ensure our products perform to the highest standards

If the product does not perform as described on this datasheet, we will offer a refund or replacement. For full details of the Abpromise, please visit <https://www.abcam.com/abpromise> or contact our technical team.

Terms and conditions

- Guarantee only valid for products bought direct from Abcam or one of our authorized distributors