



## Product datasheet

### Anti-MelanA antibody [M2-9E3] ab187369

[5 References](#) [3 Images](#)

#### Overview

<b>Product name</b>	Anti-MelanA antibody [M2-9E3]
<b>Description</b>	Mouse monoclonal [M2-9E3] to MelanA
<b>Host species</b>	Mouse
<b>Tested applications</b>	<b>Suitable for:</b> IP, IHC-Fr, ICC/IF, Flow Cyt, IHC-P, WB
<b>Species reactivity</b>	<b>Reacts with:</b> Mouse, Rat, Human
<b>Immunogen</b>	Recombinant full length protein corresponding to Human MelanA aa 1 to the C-terminus. Database link: <a href="#">Q16655</a>
	 <a href="#">Run BLAST with</a>  <a href="#">Run BLAST with</a>
<b>Positive control</b>	IHC-P: Human melanoma tissue. WB: COLO38 cell lysate.
<b>General notes</b>	<p>The Life Science industry has been in the grips of a reproducibility crisis for a number of years. Abcam is leading the way in addressing this with our range of recombinant monoclonal antibodies and knockout edited cell lines for gold-standard validation. Please check that this product meets your needs before purchasing.</p> <p>If you have any questions, special requirements or concerns, please send us an inquiry and/or contact our Support team ahead of purchase. Recommended alternatives for this product can be found below, along with publications, customer reviews and Q&amp;As</p>

#### Properties

<b>Form</b>	Liquid
<b>Storage instructions</b>	Shipped at 4°C. Store at +4°C short term (1-2 weeks). Upon delivery aliquot. Store at -20°C long term. Avoid freeze / thaw cycle.
<b>Storage buffer</b>	pH: 7.2 Preservative: 0.05% Sodium azide Constituents: 99% PBS, 0.05% BSA
<b>Purity</b>	Protein A purified
<b>Purification notes</b>	ab187369 was purified from Bioreactor Concentrate by Protein A/G.
<b>Clonality</b>	Monoclonal
<b>Clone number</b>	M2-9E3
<b>Isotype</b>	IgG2b

## Applications

### The Abpromise guarantee

Our **Abpromise guarantee** covers the use of ab187369 in the following tested applications.

The application notes include recommended starting dilutions; optimal dilutions/concentrations should be determined by the end user.

Application	Abreviews	Notes
IP		Use at an assay dependent concentration.
IHC-Fr		Use at an assay dependent concentration.
ICC/IF		Use at an assay dependent concentration.
Flow Cyt		Use at an assay dependent concentration. <b>ab170192</b> - Mouse monoclonal IgG2b, is suitable for use as an isotype control with this antibody.
IHC-P		Use a concentration of 0.5 - 1 µg/ml. Perform heat mediated antigen retrieval with citrate buffer pH 6 before commencing with IHC staining protocol.
WB		Use a concentration of 1 - 2 µg/ml. Predicted molecular weight: 13 kDa.

## Target

### Function

Involved in melanosome biogenesis by ensuring the stability of GPR143. Plays a vital role in the expression, stability, trafficking, and processing of melanocyte protein PMEL, which is critical to the formation of stage II melanosomes.

### Tissue specificity

Expression is restricted to melanoma and melanocyte cell lines and retina.

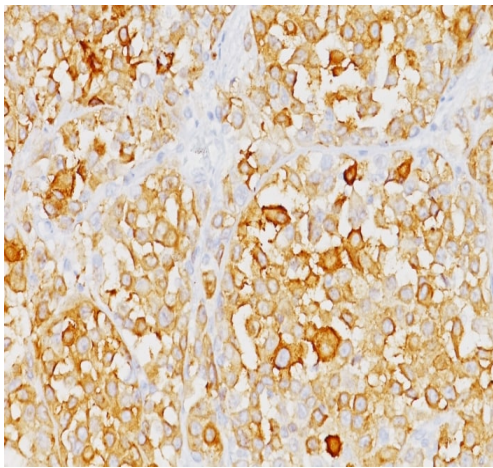
### Post-translational modifications

Acylated.

### Cellular localization

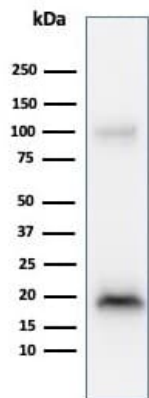
Endoplasmic reticulum membrane. Golgi apparatus. Golgi apparatus > trans-Golgi network membrane. Melanosome. Also found in small vesicles and tubules dispersed over the entire cytoplasm. A small fraction of the protein is inserted into the membrane in an inverted orientation. Inversion of membrane topology results in the relocalization of the protein from a predominant Golgi/post-Golgi area to the endoplasmic reticulum. Melanoma cells expressing the protein with an inverted membrane topology are more effectively recognized by specific cytolytic T-lymphocytes than those expressing the protein in its native membrane orientation.

## Images



Immunohistochemical analysis of formalin-fixed, paraffin-embedded Human melanoma tissue labeling MelanA with ab187369 at 1 µg/ml.

Immunohistochemistry (Formalin/PFA-fixed paraffin-embedded sections) - Anti-MelanA antibody [M2-9E3] (ab187369)

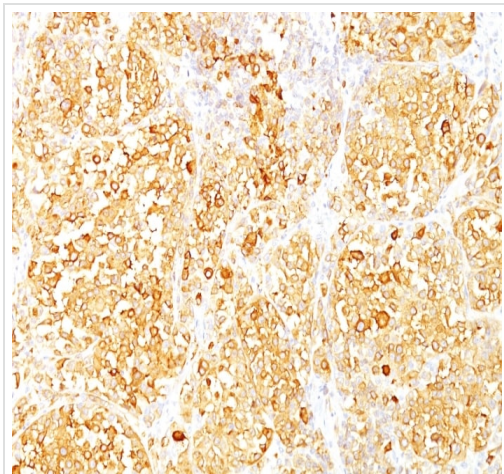


Anti-MelanA antibody [M2-9E3] (ab187369) at 1 µg/ml + Human COLO38 cell lysate

**Predicted band size:** 13 kDa

Western blot analysis of COLO38 cell lysate labeling MelanA with ab187369 at 1 ug/ml.

Western blot - Anti-MelanA antibody [M2-9E3] (ab187369)



Immunohistochemical analysis of formalin-fixed, paraffin-embedded Human melanoma tissue labeling MelanA with ab187369 at 1 µg/ml.

Immunohistochemistry (Formalin/PFA-fixed paraffin-embedded sections) - Anti-MelanA antibody [M2-9E3] (ab187369)

**Please note:** All products are "FOR RESEARCH USE ONLY. NOT FOR USE IN DIAGNOSTIC PROCEDURES"

#### Our Abpromise to you: Quality guaranteed and expert technical support

---

- Replacement or refund for products not performing as stated on the datasheet
- Valid for 12 months from date of delivery
- Response to your inquiry within 24 hours
- We provide support in Chinese, English, French, German, Japanese and Spanish
- Extensive multi-media technical resources to help you
- We investigate all quality concerns to ensure our products perform to the highest standards

If the product does not perform as described on this datasheet, we will offer a refund or replacement. For full details of the Abpromise, please visit <https://www.abcam.com/abpromise> or contact our technical team.

#### Terms and conditions

---

- Guarantee only valid for products bought direct from Abcam or one of our authorized distributors