

Product datasheet

Anti-Melanoma Associated Antigen 100+ / 7 kDa antibody [NKI/beteb] ab34165

[8 References](#) [2 Images](#)

Overview

Product name	Anti-Melanoma Associated Antigen 100+ / 7 kDa antibody [NKI/beteb]
Description	Mouse monoclonal [NKI/beteb] to Melanoma Associated Antigen 100+ / 7 kDa
Host species	Mouse
Tested applications	Suitable for: Flow Cyt, IHC-P
Species reactivity	Reacts with: Human
Immunogen	Tissue, cells or virus corresponding to Human Melanoma Associated Antigen 100+/ 7 kDa. Membranes from a human melanoma metastasis
General notes	<p>The Life Science industry has been in the grips of a reproducibility crisis for a number of years. Abcam is leading the way in addressing this with our range of recombinant monoclonal antibodies and knockout edited cell lines for gold-standard validation. Please check that this product meets your needs before purchasing.</p> <p>If you have any questions, special requirements or concerns, please send us an inquiry and/or contact our Support team ahead of purchase. Recommended alternatives for this product can be found below, along with publications, customer reviews and Q&As</p>

Properties

Form	Liquid
Storage instructions	Shipped at 4°C. Store at 4°C (stable for up to 12 months). Upon delivery aliquot. Store at +4°C.
Storage buffer	pH: 7.3 Preservative: 0.02% Sodium azide Constituents: PBS, 0.1% BSA
Purity	Protein G purified
Clonality	Monoclonal
Clone number	NKI/beteb
Isotype	IgG2b

Applications

The Abpromise guarantee

Our **Abpromise guarantee** covers the use of ab34165 in the following tested applications.

The application notes include recommended starting dilutions; optimal dilutions/concentrations should be determined by the end user.

Application	Abreviews	Notes
Flow Cyt		Use 1µg for 10 ⁶ cells. Also see PubMed: 21247888 ab170182 Mouse monoclonal IgG2b is suitable for use as an
IHC-P		1/5 - 1/20. Formalin fixation and embedding in paraffin may affect the reactivity of the antibody.

Target

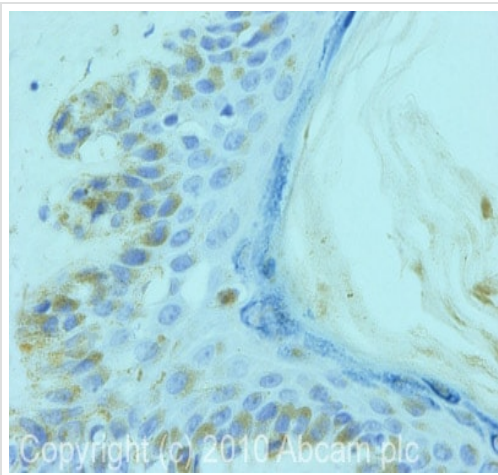
Relevance

A (pre)melanosomal 100 + 7 kd antigen (glycoprotein) present in melanomas, clear cells sarcomas (melanoma of soft tissue), nevocellular nevi, and normal melanocytes. Except for one case of non Hodgkin's lymphoma in which macrophages were positive, the antigen has not been detected with other tumors or tissues observed.

Cellular localization

The innerside of membranes of cytoplasmic vesicles in melanoma cells.

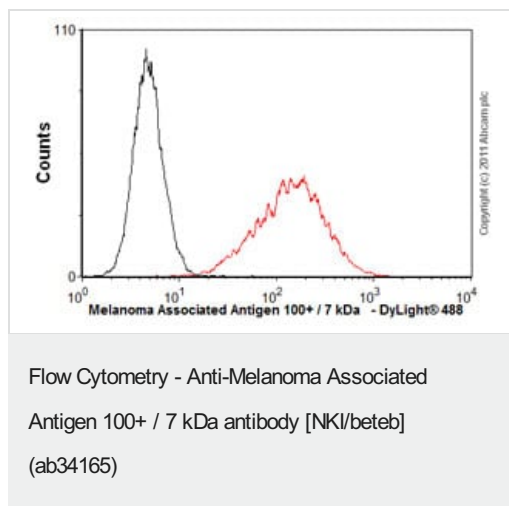
Images



Immunohistochemistry (Formalin/PFA-fixed paraffin-embedded sections) - Anti-Melanoma Associated Antigen 100+ / 7 kDa antibody [NKI/beteb] (ab34165)

IHC image of ab34165 staining in human melanoma formalin fixed paraffin embedded tissue section, performed on a Leica Bond™ system using the standard protocol F. The section was pre-treated using heat mediated antigen retrieval with sodium citrate buffer (pH6, epitope retrieval solution 1) for 20 mins. The section was then incubated with ab34165 5µg/ml, for 15 mins at room temperature and detected using an HRP conjugated compact polymer system. DAB was used as the chromogen. The section was then counterstained with haematoxylin and mounted with DPX.

For other IHC staining systems (automated and non-automated) customers should optimize variable parameters such as antigen retrieval conditions, primary antibody concentration and antibody incubation times.



Overlay histogram showing Malme-3 cells stained with ab34165 (red line). The cells were fixed with 80% methanol (5 min) and then permeabilized with 0.1% PBS-Tween for 20 min. The cells were then incubated in 1x PBS / 10% normal goat serum / 0.3M glycine to block non-specific protein-protein interactions followed by the antibody (ab34165, 1µg/1x10⁶ cells) for 30 min at 22°C. The secondary antibody used was DyLight® 488 goat anti-mouse IgG (H+L) ([ab96879](#)) at 1/500 dilution for 30 min at 22°C. Isotype control antibody (black line) was mouse IgG2b [PLPV219] ([ab91366](#), 2µg/1x10⁶ cells) used under the same conditions. Acquisition of >5,000 events was performed. This antibody gave a positive signal in Malme-3 cells fixed with 4% paraformaldehyde/permeabilized in 0.1% PBS-Tween used under the same conditions.

Please note: All products are "FOR RESEARCH USE ONLY. NOT FOR USE IN DIAGNOSTIC PROCEDURES"

Our Abpromise to you: Quality guaranteed and expert technical support

- Replacement or refund for products not performing as stated on the datasheet
- Valid for 12 months from date of delivery
- Response to your inquiry within 24 hours
- We provide support in Chinese, English, French, German, Japanese and Spanish
- Extensive multi-media technical resources to help you
- We investigate all quality concerns to ensure our products perform to the highest standards

If the product does not perform as described on this datasheet, we will offer a refund or replacement. For full details of the Abpromise, please visit <https://www.abcam.com/abpromise> or contact our technical team.

Terms and conditions

- Guarantee only valid for products bought direct from Abcam or one of our authorized distributors