

Product datasheet

Anti-Melatonin Receptor 1B/MTNR1B antibody ab203346

[28 References](#) [5 Images](#)

Overview

Product name	Anti-Melatonin Receptor 1B/MTNR1B antibody
Description	Rabbit polyclonal to Melatonin Receptor 1B/MTNR1B
Host species	Rabbit
Tested applications	Suitable for: ICC/IF, IHC-P, WB
Species reactivity	Reacts with: Mouse, Rat, Human
Immunogen	Synthetic peptide within Human Melatonin Receptor 1B/MTNR1B aa 200-300 conjugated to keyhole limpet haemocyanin. The exact immunogen sequence used to generate this antibody is proprietary information. If additional detail on the immunogen is needed to determine the suitability of the antibody for your needs, please contact our Scientific Support team to discuss your requirements. Database link: P49286 Run BLAST with Run BLAST with
Positive control	WB: Hep G2 (Human liver hepatocellular carcinoma cell line) whole cell lysate. ICC/IF: HeLa cells IHC: Mouse cerebellum, Rat brain, Rat retina
General notes	<p>The Life Science industry has been in the grips of a reproducibility crisis for a number of years. Abcam is leading the way in addressing this with our range of recombinant monoclonal antibodies and knockout edited cell lines for gold-standard validation. Please check that this product meets your needs before purchasing.</p> <p>If you have any questions, special requirements or concerns, please send us an inquiry and/or contact our Support team ahead of purchase. Recommended alternatives for this product can be found below, along with publications, customer reviews and Q&As</p>

Properties

Form	Liquid
Storage instructions	Shipped at 4°C. Store at +4°C short term (1-2 weeks). Upon delivery aliquot. Store at -20°C long term. Avoid freeze / thaw cycle.
Storage buffer	pH: 7.40 Preservative: 0.02% Proclin 300 Constituents: 50% Glycerol (glycerin, glycerine), 1% BSA, 48.98% TBS, 1X

Purity	Protein A purified
Clonality	Polyclonal
Isotype	IgG

Applications

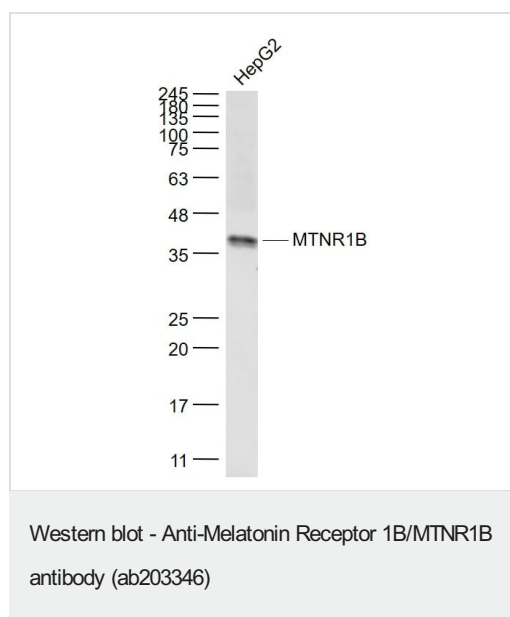
The Abpromise guarantee Our **Abpromise guarantee** covers the use of ab203346 in the following tested applications. The application notes include recommended starting dilutions; optimal dilutions/concentrations should be determined by the end user.

Application	Abreviews	Notes
ICC/IF		Use at an assay dependent concentration.
IHC-P		1/100 - 1/500. When using a fluorescent probe please use a dilution of 1/50 - 1/200.
WB		Use at an assay dependent concentration.

Target

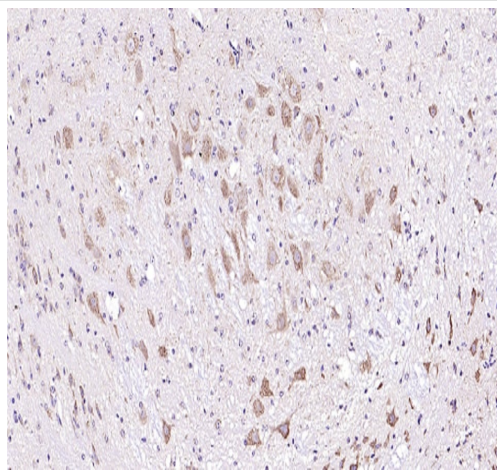
Function	High affinity receptor for melatonin. Likely to mediate the reproductive and circadian actions of melatonin. The activity of this receptor is mediated by pertussis toxin sensitive G proteins that inhibit adenylate cyclase activity.
Tissue specificity	Expressed in retina and less in brain and hippocampus.
Sequence similarities	Belongs to the G-protein coupled receptor 1 family.
Cellular localization	Cell membrane.

Images



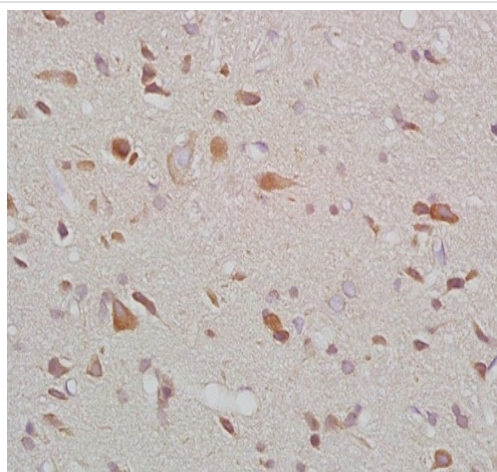
Anti-Melatonin Receptor 1B/MTNR1B antibody (ab203346) at 1/1000 dilution + Hep G2 (Human liver hepatocellular carcinoma cell line) whole cell lysate

HepG2 cell lysates probed with ab203346 at 1:1000 dilution and 4°C overnight incubation. Followed by conjugated secondary antibody incubation at 1:20000 for 60 min at 37°C.



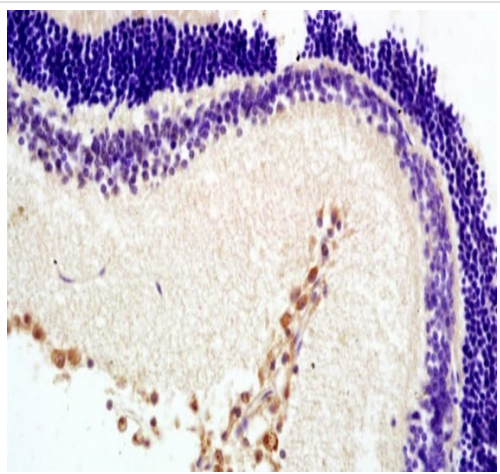
Immunohistochemistry (Formalin/PFA-fixed paraffin-embedded sections) - Anti-Melatonin Receptor 1B/MTNR1B antibody (ab203346)

Paraformaldehyde-fixed, paraffin embedded Mouse cerebellum section; Antigen retrieval by boiling in sodium citrate buffer (pH6.0) for 15min; Block endogenous peroxidase by 3% hydrogen peroxide for 20 minutes; Blocking buffer (normal goat serum) at 37°C for 30min; Antibody incubation with ab203346 at 1:200 overnight at 4°C, followed by conjugation to the secondary antibody and DAB staining.



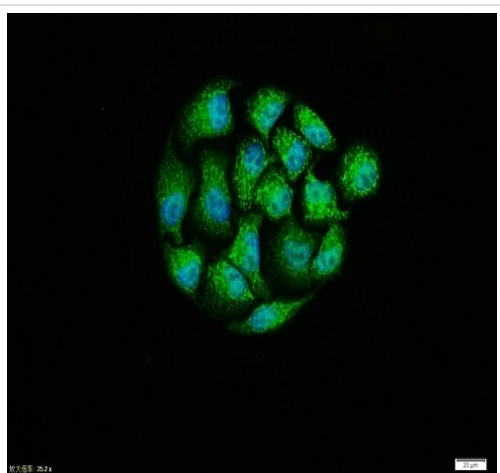
Immunohistochemistry (Formalin/PFA-fixed paraffin-embedded sections) - Anti-Melatonin Receptor 1B/MTNR1B antibody (ab203346)

Immunohistochemical analysis of formalin-fixed, paraffin-embedded rat brain sections labeling Melatonin Receptor 1B/MTNR1B with ab203346 at a 1/200 dilution, followed by conjugation to the secondary antibody and DAB staining.



Immunohistochemistry (Formalin/PFA-fixed paraffin-embedded sections) - Anti-Melatonin Receptor 1B/MTNR1B antibody (ab203346)

Immunohistochemical analysis of formalin-fixed, paraffin-embedded rat retina sections labeling Melatonin Receptor 1B/MTNR1B with ab203346 at a 1/200 dilution, followed by conjugation to the secondary antibody and DAB staining.



Immunocytochemistry/ Immunofluorescence - Anti-Melatonin Receptor 1B/MTNR1B antibody (ab203346)

ab203346 staining MTNR1B in HeLa cells. The cells were fixed with 4% Paraformaldehyde, permeabilized with Triton X-100 at room temperature for 20 min; blocked with normal goat serum at 37°C for 20 min then incubated with ab203346 at 1:100, 90 minutes at 37°C; followed by a conjugated Goat Anti-Rabbit IgG antibody at 37°C for 90 minutes, DAPI (blue) was used to stain the cell nuclei.

Please note: All products are "FOR RESEARCH USE ONLY. NOT FOR USE IN DIAGNOSTIC PROCEDURES"

Our Abpromise to you: Quality guaranteed and expert technical support

- Replacement or refund for products not performing as stated on the datasheet
- Valid for 12 months from date of delivery
- Response to your inquiry within 24 hours
- We provide support in Chinese, English, French, German, Japanese and Spanish
- Extensive multi-media technical resources to help you
- We investigate all quality concerns to ensure our products perform to the highest standards

If the product does not perform as described on this datasheet, we will offer a refund or replacement. For full details of the Abpromise,

please visit <https://www.abcam.com/abpromise> or contact our technical team.

Terms and conditions

- Guarantee only valid for products bought direct from Abcam or one of our authorized distributors