

Product datasheet

Anti-Melatonin Receptor 1B/MTNR1B antibody - N-terminal ab229544

[1 References](#) [2 Images](#)

Overview

Product name	Anti-Melatonin Receptor 1B/MTNR1B antibody - N-terminal
Description	Rabbit polyclonal to Melatonin Receptor 1B/MTNR1B - N-terminal
Host species	Rabbit
Tested applications	Suitable for: WB
Species reactivity	Reacts with: Human
Immunogen	Synthetic peptide within Human Melatonin Receptor 1B/MTNR1B (N terminal). The exact sequence is proprietary. Conjugated to a carrier protein. Database link: P49286
Positive control	WB: K562, THP-1, U-87 MG, SK-N-SH, IMR32 and SK-N-AS whole cell lysates.
General notes	<p>The Life Science industry has been in the grips of a reproducibility crisis for a number of years. Abcam is leading the way in addressing this with our range of recombinant monoclonal antibodies and knockout edited cell lines for gold-standard validation. Please check that this product meets your needs before purchasing.</p> <p>If you have any questions, special requirements or concerns, please send us an inquiry and/or contact our Support team ahead of purchase. Recommended alternatives for this product can be found below, along with publications, customer reviews and Q&As</p>

Properties

Form	Liquid
Storage instructions	Shipped at 4°C. Store at +4°C short term (1-2 weeks). Upon delivery aliquot. Store at -20°C long term. Avoid freeze / thaw cycle.
Storage buffer	pH: 7.00 Preservative: 0.025% Proclin 300 Constituents: 79% PBS, 20% Glycerol (glycerin, glycerine)
Purity	Immunogen affinity purified
Clonality	Polyclonal
Isotype	IgG

Applications

The Abpromise guarantee

Our **Abpromise guarantee** covers the use of ab229544 in the following tested applications.

The application notes include recommended starting dilutions; optimal dilutions/concentrations should be determined by the end user.

Application	Abreviews	Notes
WB		1/500 - 1/3000. Predicted molecular weight: 40 kDa.

Target

Function

High affinity receptor for melatonin. Likely to mediate the reproductive and circadian actions of melatonin. The activity of this receptor is mediated by pertussis toxin sensitive G proteins that inhibit adenylate cyclase activity.

Tissue specificity

Expressed in retina and less in brain and hippocampus.

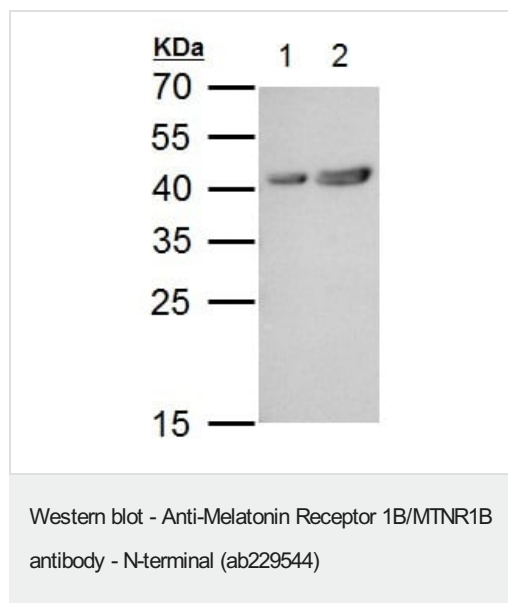
Sequence similarities

Belongs to the G-protein coupled receptor 1 family.

Cellular localization

Cell membrane.

Images



All lanes : Anti-Melatonin Receptor 1B/MTNR1B antibody - N-terminal (ab229544) at 1/1000 dilution

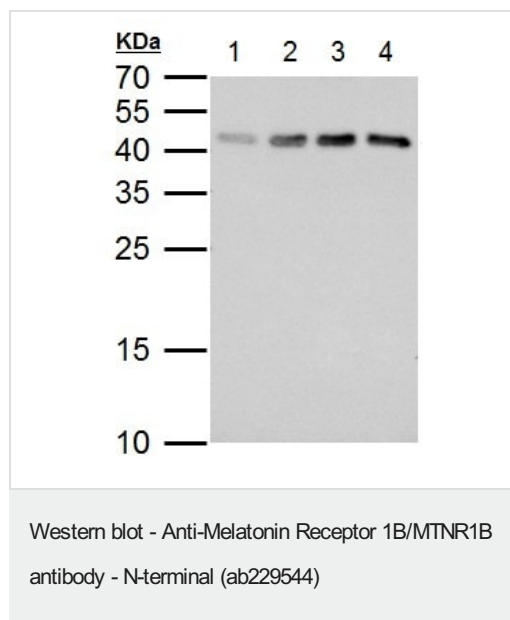
Lane 1 : K562 (human chronic myelogenous leukemia cell line from bone marrow) whole cell lysate

Lane 2 : THP-1 (human monocytic leukemia cell line) whole cell lysate

Lysates/proteins at 30 µg per lane.

Predicted band size: 40 kDa

12% SDS-PAGE gel.



All lanes : Anti-Melatonin Receptor 1B/MTNR1B antibody - N-terminal (ab229544) at 1/1000 dilution

Lane 1 : U-87 MG (human glioblastoma-astrocytoma epithelial cell line) whole cell lysate

Lane 2 : SK-N-SH (human neuroblastoma cell line) whole cell lysate

Lane 3 : IMR32 whole cell lysate

Lane 4 : SK-N-AS whole cell lysate

Lysates/proteins at 30 µg per lane.

Predicted band size: 40 kDa

12% SDS-PAGE gel.

Please note: All products are "FOR RESEARCH USE ONLY. NOT FOR USE IN DIAGNOSTIC PROCEDURES"

Our Abpromise to you: Quality guaranteed and expert technical support

- Replacement or refund for products not performing as stated on the datasheet
- Valid for 12 months from date of delivery
- Response to your inquiry within 24 hours
- We provide support in Chinese, English, French, German, Japanese and Spanish
- Extensive multi-media technical resources to help you
- We investigate all quality concerns to ensure our products perform to the highest standards

If the product does not perform as described on this datasheet, we will offer a refund or replacement. For full details of the Abpromise, please visit <https://www.abcam.com/abpromise> or contact our technical team.

Terms and conditions

- Guarantee only valid for products bought direct from Abcam or one of our authorized distributors