




Product datasheet

Anti-MELK antibody [2G2] ab129373

[5 References](#) [4 Images](#)

Overview

Product name	Anti-MELK antibody [2G2]
Description	Mouse monoclonal [2G2] to MELK
Host species	Mouse
Tested applications	Suitable for: IHC-P, Flow Cyt, ICC/IF
Species reactivity	Reacts with: Human Predicted to work with: Mouse, Cow, Xenopus laevis, Zebrafish, Xenopus tropicalis 
Immunogen	Synthetic peptide: C-VYKRLVEDILSSCKV (with a Cysteine residue linker), corresponding to C terminal amino acids 637-651 of Human MELK (Q14680). <div>  Run BLAST with  Run BLAST with </div>
Positive control	HepG2 cells and MCF-7 cells. Human liver cancer tissue.
General notes	<p>This product was changed from ascites to supernatant. Lot no's high than GR248807-19 are from Tissue Culture Supernatant</p> <p>The Life Science industry has been in the grips of a reproducibility crisis for a number of years. Abcam is leading the way in addressing this with our range of recombinant monoclonal antibodies and knockout edited cell lines for gold-standard validation. Please check that this product meets your needs before purchasing.</p> <p>If you have any questions, special requirements or concerns, please send us an inquiry and/or contact our Support team ahead of purchase. Recommended alternatives for this product can be found below, along with publications, customer reviews and Q&As</p>

Properties

Form	Liquid
Storage instructions	Shipped at 4°C. Store at +4°C short term (1-2 weeks). Store at -20°C long term.
Storage buffer	Preservative: 0.05% Sodium azide Constituent: 99% PBS
Purity	Protein G purified
Purification notes	Purified from tissue culture supernatant.

Clonality	Monoclonal
Clone number	2G2
Isotype	IgG2a

Applications

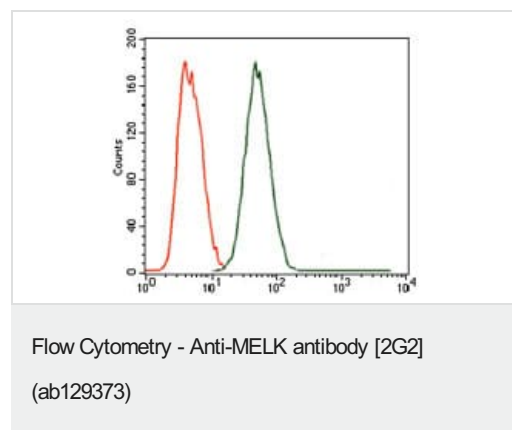
The Abpromise guarantee Our **Abpromise guarantee** covers the use of ab129373 in the following tested applications. The application notes include recommended starting dilutions; optimal dilutions/concentrations should be determined by the end user.

Application	Abreviews	Notes
IHC-P		1/200 - 1/1000.
Flow Cyt		1/200 - 1/400. ab170191 - Mouse monoclonal IgG2a, is suitable for use as an isotype control with this antibody.
ICC/IF		1/200 - 1/1000.

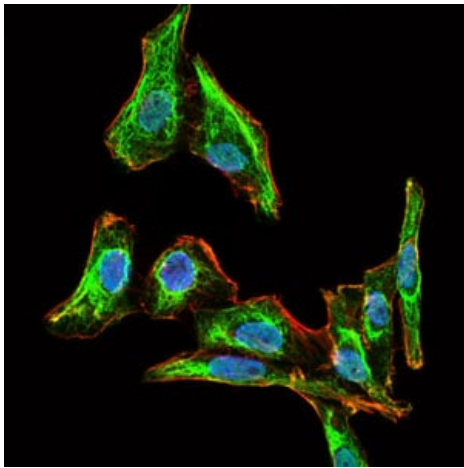
Target

Function	Phosphorylates ZNF622 and may contribute to its redirection to the nucleus. May be involved in the inhibition of spliceosome assembly during mitosis.
Tissue specificity	Expressed in placenta, kidney, thymus, testis, ovary and intestine.
Sequence similarities	Belongs to the protein kinase superfamily. CAMK Ser/Thr protein kinase family. SNF1 subfamily. Contains 1 KA1 (kinase-associated) domain. Contains 1 protein kinase domain.
Post-translational modifications	Autophosphorylated. Thr-478 phosphorylation during mitosis promotes interaction with PPP1R8.
Cellular localization	Cytoplasm.

Images

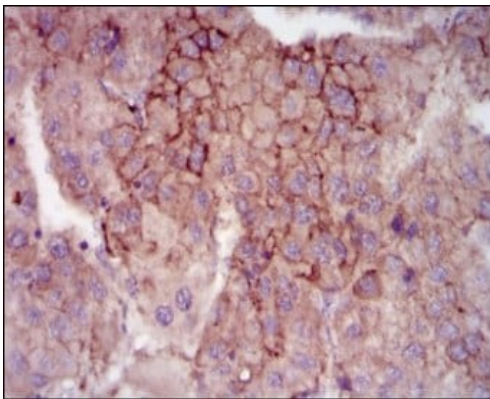


ab129373 at 1/200 dilution (green) or negative control (red) staining MELK in MCF-7 cells by flow cytometry.



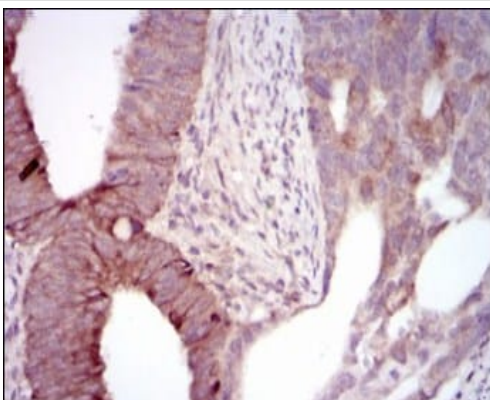
Immunocytochemistry/ Immunofluorescence - Anti-MELK antibody [2G2] (ab129373)

ab129373 at 1/200 dilution staining MELK (green) in HepG2 cells by immunofluorescence. DNA is stained with DRAQ fluorescent dye (blue) and actin filaments with Alexa Fluor-555 phalloidin (red).



Immunohistochemistry (Formalin/PFA-fixed paraffin-embedded sections) - Anti-MELK antibody [2G2] (ab129373)

ab129373 at 1/200 dilution staining MELK in paraffin-embedded liver cancer tissue by immunohistochemistry, with DAB staining.



Immunohistochemistry (Formalin/PFA-fixed paraffin-embedded sections) - Anti-MELK antibody [2G2] (ab129373)

ab129373 at 1/200 dilution staining MELK in paraffin-embedded liver cancer tissue by immunohistochemistry, with DAB staining.

Please note: All products are "FOR RESEARCH USE ONLY. NOT FOR USE IN DIAGNOSTIC PROCEDURES"

Our Abpromise to you: Quality guaranteed and expert technical support

- Replacement or refund for products not performing as stated on the datasheet
- Valid for 12 months from date of delivery
- Response to your inquiry within 24 hours

- We provide support in Chinese, English, French, German, Japanese and Spanish
- Extensive multi-media technical resources to help you
- We investigate all quality concerns to ensure our products perform to the highest standards

If the product does not perform as described on this datasheet, we will offer a refund or replacement. For full details of the Abpromise, please visit <https://www.abcam.com/abpromise> or contact our technical team.

Terms and conditions

- Guarantee only valid for products bought direct from Abcam or one of our authorized distributors