

### Anti-MELK antibody ab245574

2 Images

#### Overview

<b>Product name</b>	Anti-MELK antibody
<b>Description</b>	Rabbit polyclonal to MELK
<b>Host species</b>	Rabbit
<b>Tested applications</b>	<b>Suitable for:</b> WB, IP
<b>Species reactivity</b>	<b>Reacts with:</b> Human
<b>Immunogen</b>	Synthetic peptide within Human MELK aa 425-475. The exact sequence is proprietary. NP_055606.1 Database link: <a href="#">Q14680</a>
<b>Positive control</b>	WB: HeLa and Jurkat whole cell lysate. IP: HeLa whole cell lysate.
<b>General notes</b>	<p>The Life Science industry has been in the grips of a reproducibility crisis for a number of years. Abcam is leading the way in addressing this with our range of recombinant monoclonal antibodies and knockout edited cell lines for gold-standard validation. Please check that this product meets your needs before purchasing.</p> <p>If you have any questions, special requirements or concerns, please send us an inquiry and/or contact our Support team ahead of purchase. Recommended alternatives for this product can be found below, along with publications, customer reviews and Q&amp;As</p>

#### Properties

<b>Form</b>	Liquid
<b>Storage instructions</b>	Shipped at 4°C. Store at +4°C short term (1-2 weeks). Upon delivery aliquot. Store at -20°C long term. Avoid freeze / thaw cycle.
<b>Storage buffer</b>	<p>pH: 7</p> <p>Preservative: 0.09% Sodium azide</p> <p>Constituent: Tris citrate/phosphate</p>
<b>Purity</b>	pH 7 to 8
<b>Purification notes</b>	Immunogen affinity purified
<b>Clonality</b>	ab245574 was affinity purified using an epitope specific to MELK immobilized on solid support.
<b>Isotype</b>	Polyclonal
	IgG

## Applications

### The Abpromise guarantee

Our **Abpromise guarantee** covers the use of ab245574 in the following tested applications.

The application notes include recommended starting dilutions; optimal dilutions/concentrations should be determined by the end user.

Application	Abreviews	Notes
WB		1/2000 - 1/10000. Predicted molecular weight: 75 kDa.
IP		Use at 2-10 µg/mg of lysate.

## Target

### Function

Phosphorylates ZNF622 and may contribute to its redirection to the nucleus. May be involved in the inhibition of spliceosome assembly during mitosis.

### Tissue specificity

Expressed in placenta, kidney, thymus, testis, ovary and intestine.

### Sequence similarities

Belongs to the protein kinase superfamily. CAMK Ser/Thr protein kinase family. SNF1 subfamily. Contains 1 KA1 (kinase-associated) domain. Contains 1 protein kinase domain.

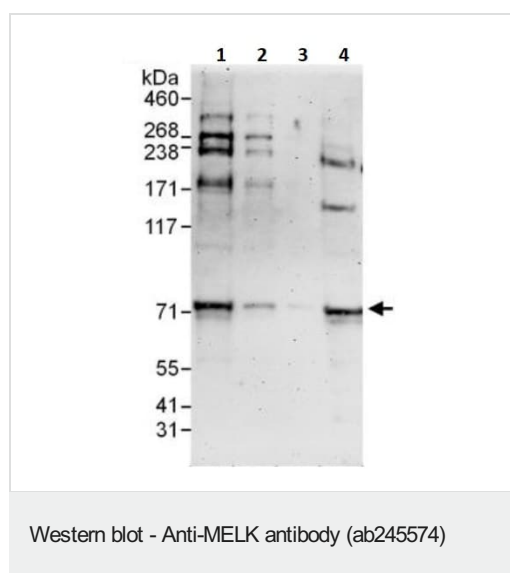
### Post-translational modifications

Autophosphorylated. Thr-478 phosphorylation during mitosis promotes interaction with PPP1R8.

### Cellular localization

Cytoplasm.

## Images



**All lanes :** Anti-MELK antibody (ab245574) at 0.1 µg/ml

**Lane 1 :** HeLa (Human epithelial cell line from cervix adenocarcinoma) whole cell lysate at 50 µg

**Lane 2 :** HeLa whole cell lysate at 15 µg

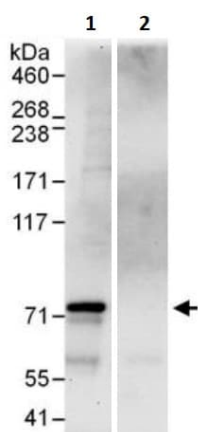
**Lane 3 :** HeLa whole cell lysate at 5 µg

**Lane 4 :** Jurkat (Human T cell leukemia cell line from peripheral blood) whole cell lysate at 50 µg

Developed using the ECL technique.

**Predicted band size:** 75 kDa

**Exposure time:** 30 seconds



Immunoprecipitation - Anti-MELK antibody  
(ab245574)

MELK was immunoprecipitated from HeLa (Human epithelial cell line from cervix adenocarcinoma) whole cell lysate (1 mg per IP reaction; 20% of IP loaded).

ab245574 used for IP at 6 µg/mg lysate. For WB 1 µg/ml.

**Lane 1:** ab245574 IP in HeLa whole cell lysate.

**Lane 2:** Control IgG in HeLa whole cell lysate.

Chemiluminescence detection: 30 seconds.

**Please note:** All products are "FOR RESEARCH USE ONLY. NOT FOR USE IN DIAGNOSTIC PROCEDURES"

### Our Abpromise to you: Quality guaranteed and expert technical support

- Replacement or refund for products not performing as stated on the datasheet
- Valid for 12 months from date of delivery
- Response to your inquiry within 24 hours
- We provide support in Chinese, English, French, German, Japanese and Spanish
- Extensive multi-media technical resources to help you
- We investigate all quality concerns to ensure our products perform to the highest standards

If the product does not perform as described on this datasheet, we will offer a refund or replacement. For full details of the Abpromise, please visit <https://www.abcam.com/abpromise> or contact our technical team.

### Terms and conditions

- Guarantee only valid for products bought direct from Abcam or one of our authorized distributors