

Product datasheet

Anti-Mesothelioma antibody [HBME-1], prediluted ab75307

[1 Image](#)

Overview

Product name	Anti-Mesothelioma antibody [HBME-1], prediluted
Description	Mouse monoclonal [HBME-1] to Mesothelioma, prediluted
Host species	Mouse
Specificity	ab75307 recognises an unknown antigen on microvilli of mesothelioma cells. It stains normal mesothelial cells as well as epithelial mesotheliomas in a thick membrane pattern due to abundant lung microvilli on the surface of these cells.
Tested applications	Suitable for: IHC-P
Species reactivity	Reacts with: Human
Immunogen	Tissue, cells or virus corresponding to Human Mesothelioma. A suspension of human mesothelioma cells from patients with malignant epithelial mesothelioma.
Positive control	Human mesothelioma tissue.
General notes	<p>The Life Science industry has been in the grips of a reproducibility crisis for a number of years. Abcam is leading the way in addressing this with our range of recombinant monoclonal antibodies and knockout edited cell lines for gold-standard validation. Please check that this product meets your needs before purchasing.</p> <p>If you have any questions, special requirements or concerns, please send us an inquiry and/or contact our Support team ahead of purchase. Recommended alternatives for this product can be found below, along with publications, customer reviews and Q&As</p>

Properties

Form	Liquid
Storage instructions	Shipped at 4°C. Store at +4°C.
Storage buffer	<p>pH: 7.60</p> <p>Preservative: 0.2% Sodium azide</p> <p>Constituent: 2% BSA</p> <p>Stabilizing agent.</p>
Purity	Tissue culture supernatant

Clonality	Monoclonal
Clone number	HBME-1
Isotype	IgM
Light chain type	kappa

Applications

The Abpromise guarantee Our **Abpromise guarantee** covers the use of ab75307 in the following tested applications. The application notes include recommended starting dilutions; optimal dilutions/concentrations should be determined by the end user.

Application	Abreviews	Notes
IHC-P		

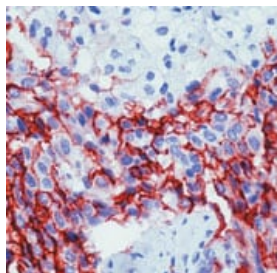
Application notes IHC-P: Ready to use.
Perform heat mediated antigen retrieval before commencing with IHC staining protocol.

Not yet tested in other applications.
Optimal dilutions/concentrations should be determined by the end user.

Target

Relevance Mesothelioma is a rare form of carcinoma of the mesothelial cells which that normally line the body cavities, including the pleura, peritoneum, pericardium, and testis. It may be localized or diffuse. Most, but not all, cases of pleural malignant mesothelioma are associated with asbestos exposure.

Images



ab75307 staining of Mesothelioma in human mesothelioma by Immunohistochemistry, Formalin-fixed, Paraffin-embedded tissue using peroxidase-conjugate and AEC chromogen. Note membrane staining of tumor cells.

Immunohistochemistry (Formalin/PFA-fixed paraffin-embedded sections) - Anti-Mesothelioma antibody [HBME-1], prediluted (ab75307)

Please note: All products are "FOR RESEARCH USE ONLY. NOT FOR USE IN DIAGNOSTIC PROCEDURES"

Our Abpromise to you: Quality guaranteed and expert technical support

- Replacement or refund for products not performing as stated on the datasheet
- Valid for 12 months from date of delivery
- Response to your inquiry within 24 hours
- We provide support in Chinese, English, French, German, Japanese and Spanish
- Extensive multi-media technical resources to help you
- We investigate all quality concerns to ensure our products perform to the highest standards

If the product does not perform as described on this datasheet, we will offer a refund or replacement. For full details of the Abpromise, please visit <https://www.abcam.com/abpromise> or contact our technical team.

Terms and conditions

- Guarantee only valid for products bought direct from Abcam or one of our authorized distributors