




Product datasheet

Anti-MEST antibody ab230114

[2 References](#) [3 Images](#)

Overview

Product name	Anti-MEST antibody
Description	Rabbit polyclonal to MEST
Host species	Rabbit
Tested applications	Suitable for: WB, IHC-P
Species reactivity	Reacts with: Mouse, Human Predicted to work with: Rat, Cow 
Immunogen	Recombinant fragment corresponding to Human MEST aa 100 to the C-terminus. Database link: Q5EB52  Run BLAST with  Run BLAST with
Positive control	WB: Mouse kidney tissue lysate. IHC-P: Human breast cancer and pancreatic tissue.
General notes	<p>The Life Science industry has been in the grips of a reproducibility crisis for a number of years. Abcam is leading the way in addressing this with our range of recombinant monoclonal antibodies and knockout edited cell lines for gold-standard validation. Please check that this product meets your needs before purchasing.</p> <p>If you have any questions, special requirements or concerns, please send us an inquiry and/or contact our Support team ahead of purchase. Recommended alternatives for this product can be found below, along with publications, customer reviews and Q&As</p>

Properties

Form	Liquid
Storage instructions	Shipped at 4°C. Store at +4°C short term (1-2 weeks). Upon delivery aliquot. Store at -20°C long term. Avoid freeze / thaw cycle.
Storage buffer	pH: 7.30 Preservative: 0.02% Sodium azide Constituents: PBS, 50% Glycerol (glycerin, glycerine)
Purity	Immunogen affinity purified
Clonality	Polyclonal
Isotype	IgG

Applications

The Abpromise guarantee

Our **Abpromise guarantee** covers the use of ab230114 in the following tested applications.

The application notes include recommended starting dilutions; optimal dilutions/concentrations should be determined by the end user.

Application	Abreviews	Notes
WB		1/1000 - 1/5000. Detects a band of approximately 39 kDa (predicted molecular weight: 39, 38, 34 kDa).
IHC-P		1/20 - 1/200.

Target

Tissue specificity

Highly expressed in hydatidiform moles, but barely expressed in dermoid cysts. Biallelic expression is detected in blood lymphocytes. Seems to be imprinted in an isoform-specific manner rather than in a tissue-specific manner in lymphocytes. Isoform 1 is expressed only from the paternal allele. Isoform 2 is expressed from both the paternal allele and the maternal allele.

Sequence similarities

Belongs to the AB hydrolase superfamily.

Developmental stage

Monoallelic expression of paternally derived allele was observed in all fetal tissues examined, including brain, skeletal muscle, kidney, adrenal, tongue, heart, skin and placenta. In 75-day fetus, expressed in the amnion, brain, heart, lung, stomach, gut, adrenal, kidney, muscle and liver.

Cellular localization

Endoplasmic reticulum membrane.

Images



Western blot - Anti-MEST antibody (ab230114)

Anti-MEST antibody (ab230114) at 1/1000 dilution + Mouse kidney tissue lysate

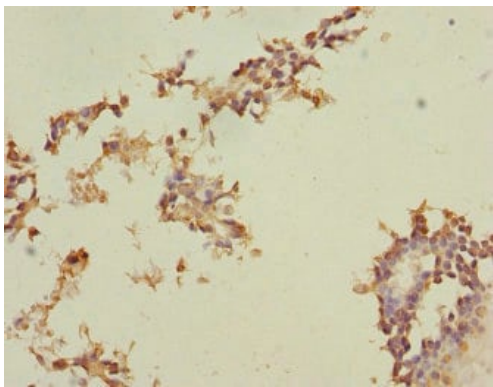
Secondary

Goat anti-Rabbit IgG at 1/10000 dilution

Developed using the ECL technique.

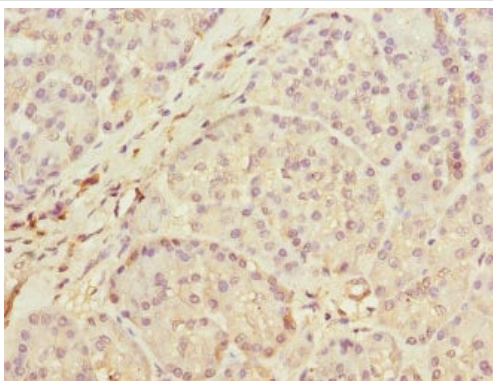
Predicted band size: 39, 38, 34 kDa

Observed band size: 39 kDa



Paraffin-embedded human breast cancer tissue stained for MEST with ab230114 at 1/100 dilution in immunohistochemical analysis.

Immunohistochemistry (Formalin/PFA-fixed paraffin-embedded sections) - Anti-MEST antibody (ab230114)



Paraffin-embedded human pancreatic tissue stained for MEST with ab230114 at 1/100 dilution in immunohistochemical analysis.

Immunohistochemistry (Formalin/PFA-fixed paraffin-embedded sections) - Anti-MEST antibody (ab230114)

Please note: All products are "FOR RESEARCH USE ONLY. NOT FOR USE IN DIAGNOSTIC PROCEDURES"

Our Abpromise to you: Quality guaranteed and expert technical support

- Replacement or refund for products not performing as stated on the datasheet
- Valid for 12 months from date of delivery
- Response to your inquiry within 24 hours
- We provide support in Chinese, English, French, German, Japanese and Spanish
- Extensive multi-media technical resources to help you
- We investigate all quality concerns to ensure our products perform to the highest standards

If the product does not perform as described on this datasheet, we will offer a refund or replacement. For full details of the Abpromise, please visit <https://www.abcam.com/abpromise> or contact our technical team.

Terms and conditions

- Guarantee only valid for products bought direct from Abcam or one of our authorized distributors