

Product datasheet

Anti-Met (c-Met) (phospho Y1234 + Y1235) antibody [MetY12341235-6F11] ab278552

Recombinant

[5 Images](#)

Overview

Product name	Anti-Met (c-Met) (phospho Y1234 + Y1235) antibody [MetY12341235-6F11]
Description	Rabbit monoclonal [MetY12341235-6F11] to Met (c-Met) (phospho Y1234 + Y1235)
Host species	Rabbit
Tested applications	Suitable for: Flow Cyt
Species reactivity	Reacts with: Mouse, Human
Immunogen	Synthetic peptide within Human Met (c-Met) (phospho Y1234 + Y1235). The exact immunogen sequence used to generate this antibody is proprietary information. If additional detail on the immunogen is needed to determine the suitability of the antibody for your needs, please contact our Scientific Support team to discuss your requirements. Database link: P08581 Run BLAST with Run BLAST with
Positive control	Flow cyt: Ramos and NIH/3T3 cells (both treated with pervanadate); Ramos (treated with FBS + pervanadate)
General notes	This product is a recombinant monoclonal antibody, which offers several advantages including: <ul style="list-style-type: none">- High batch-to-batch consistency and reproducibility- Improved sensitivity and specificity- Long-term security of supply- Animal-free production For more information see here .

Properties

Form	Liquid
Storage instructions	Shipped at 4°C. Store at +4°C short term (1-2 weeks). Upon delivery aliquot. Store at -20°C long term. Avoid freeze / thaw cycle.
Storage buffer	Preservative: 0.02% Sodium azide Constituents: 49.88% PBS, 50% Glycerol (glycerin, glycerine), 0.1% BSA
Purity	Protein A/G purified
Clonality	Monoclonal

Clone number	MetY12341235-6F11
Isotype	IgG
Light chain type	kappa

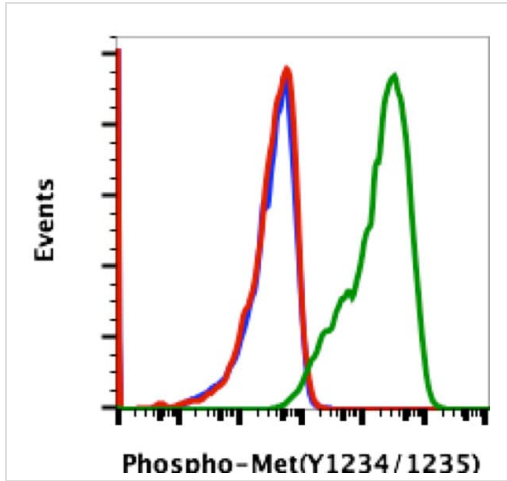
Applications

The Abpromise guarantee Our **Abpromise guarantee** covers the use of ab278552 in the following tested applications. The application notes include recommended starting dilutions; optimal dilutions/concentrations should be determined by the end user.

Application	Abreviews	Notes
Flow Cyt		Use a concentration of 0.001 - 1 µg/ml.

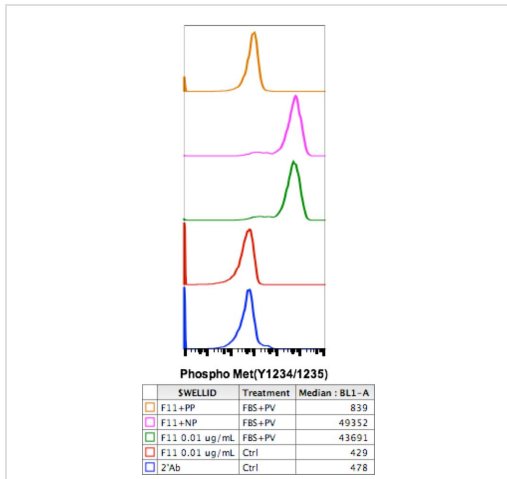
Target

Function	Receptor for hepatocyte growth factor and scatter factor. Has a tyrosine-protein kinase activity. Functions in cell proliferation, scattering, morphogenesis and survival.
Involvement in disease	<p>Note=Activation of MET after rearrangement with the TPR gene produces an oncogenic protein.</p> <p>Note=Defects in MET may be associated with gastric cancer.</p> <p>Defects in MET are a cause of hepatocellular carcinoma (HCC) [MIM:114550].</p> <p>Defects in MET are a cause of renal cell carcinoma papillary (RCCP) [MIM:605074]. It is a subtype of renal cell carcinoma tending to show a tubulo-papillary architecture formed by numerous, irregular, finger-like projections of connective tissue. Renal cell carcinoma is a heterogeneous group of sporadic or hereditary carcinoma derived from cells of the proximal renal tubular epithelium. It is subclassified into common renal cell carcinoma (clear cell, non-papillary carcinoma), papillary renal cell carcinoma, chromophobe renal cell carcinoma, collecting duct carcinoma with medullary carcinoma of the kidney, and unclassified renal cell carcinoma.</p> <p>Note=A common allele in the promoter region of the MET shows genetic association with susceptibility to autism in some families. Functional assays indicate a decrease in MET promoter activity and altered binding of specific transcription factor complexes.</p> <p>Note=MET activating mutations may be involved in the development of a highly malignant, metastatic syndrome known as cancer of unknown primary origin (CUP) or primary occult malignancy. Systemic neoplastic spread is generally a late event in cancer progression. However, in some instances, distant dissemination arises at a very early stage, so that metastases reach clinical relevance before primary lesions. Sometimes, the primary lesions cannot be identified in spite of the progresses in the diagnosis of malignancies.</p>
Sequence similarities	<p>Belongs to the protein kinase superfamily. Tyr protein kinase family.</p> <p>Contains 3 IPT/TIG domains.</p> <p>Contains 1 protein kinase domain.</p> <p>Contains 1 Sema domain.</p>
Domain	The kinase domain is involved in SPSB1 binding.
Post-translational modifications	Dephosphorylated by PTPRJ at Tyr-1349 and Tyr-1365.
Cellular localization	Membrane.



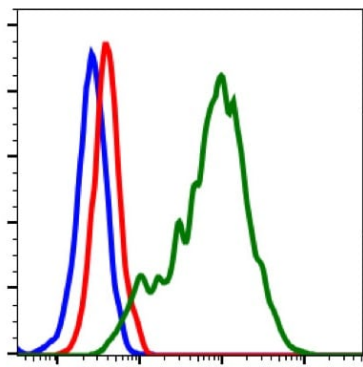
Flow cytometric analysis of Ramos cells secondary antibody only negative control (blue) or untreated (red) or treated with pervanadate (green) using 0.005 ug/mL ab278552.

Flow Cytometry - Anti-Met (c-Met) (phospho Y1234 + Y1235) antibody [MetY12341235-6F11] (ab278552)



Flow cytometric analysis of Ramos cells secondary antibody only negative control (blue) untreated (red) treated with FBS + pervanadate (green) treated plus blocked by non-phospho peptide (violet) or treated plus blocked by phospho-peptide (brown) using 0.01 ug/mL ab278552.

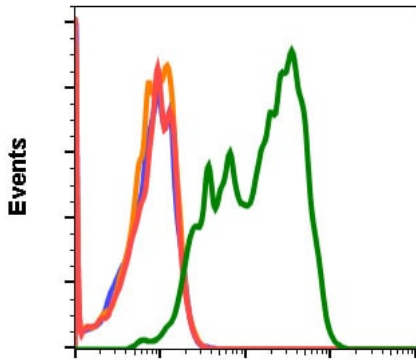
Flow Cytometry - Anti-Met (c-Met) (phospho Y1234 + Y1235) antibody [MetY12341235-6F11] (ab278552)



Phospho-Met (Y1234/1235)

Flow Cytometry - Anti-Met (c-Met) (phospho Y1234 + Y1235) antibody [MetY12341235-6F11] (ab278552)

Flow cytometric analysis of Ramos cells secondary only negative control (blue) or untreated (red) or treated with FBS + pervanadate (green) using ab278552 at 0.01ug/mL.



Phospho-Met (Y1234/1235)

Flow Cytometry - Anti-Met (c-Met) (phospho Y1234 + Y1235) antibody [MetY12341235-6F11] (ab278552)

Flow cytometric analysis of NIH3T3 cells secondary antibody only negative control (blue) or 0.1 µg/mL of isotype control (orange) or treated with imatinib (red) or with pervanadate (green) using ab278552 at 0.1 µg/mL.

Why choose a recombinant antibody?



Research with confidence
Consistent and reproducible results



Long-term and scalable supply
Recombinant technology



Success from the first experiment
Confirmed specificity



Ethical standards compliant
Animal-free production

Anti-Met (c-Met) (phospho Y1234 + Y1235) antibody
[MetY12341235-6F11] (ab278552)

Please note: All products are "FOR RESEARCH USE ONLY. NOT FOR USE IN DIAGNOSTIC PROCEDURES"

Our Abpromise to you: Quality guaranteed and expert technical support

- Replacement or refund for products not performing as stated on the datasheet
- Valid for 12 months from date of delivery
- Response to your inquiry within 24 hours
- We provide support in Chinese, English, French, German, Japanese and Spanish
- Extensive multi-media technical resources to help you
- We investigate all quality concerns to ensure our products perform to the highest standards

If the product does not perform as described on this datasheet, we will offer a refund or replacement. For full details of the Abpromise, please visit <https://www.abcam.com/abpromise> or contact our technical team.

Terms and conditions

- Guarantee only valid for products bought direct from Abcam or one of our authorized distributors