


## Product datasheet

# Anti-Metabotropic Glutamate Receptor 3/MGLUR3 antibody ab137853

[2 Images](#)

### Overview

---

<b>Product name</b>	Anti-Metabotropic Glutamate Receptor 3/MGLUR3 antibody
<b>Description</b>	Rabbit polyclonal to Metabotropic Glutamate Receptor 3/MGLUR3
<b>Host species</b>	Rabbit
<b>Tested applications</b>	<b>Suitable for:</b> ICC/IF, WB
<b>Species reactivity</b>	<b>Reacts with:</b> Rat, Human <b>Predicted to work with:</b> Mouse, Cow 
<b>Immunogen</b>	Synthetic peptide corresponding to Human Metabotropic Glutamate Receptor 3/MGLUR3 aa 815-879 (C terminal). Database link: <a href="#">Q14832</a>
<b>Positive control</b>	WB: HEK-293T, A431 whole cell lysates. ICC/IF: DIV9 rat E18 primary cortical neuron cells.
<b>General notes</b>	<p>The Life Science industry has been in the grips of a reproducibility crisis for a number of years. Abcam is leading the way in addressing this with our range of recombinant monoclonal antibodies and knockout edited cell lines for gold-standard validation. Please check that this product meets your needs before purchasing.</p> <p>If you have any questions, special requirements or concerns, please send us an inquiry and/or contact our Support team ahead of purchase. Recommended alternatives for this product can be found below, along with publications, customer reviews and Q&amp;As</p>

### Properties

---

<b>Form</b>	Liquid
<b>Storage instructions</b>	Shipped at 4°C. Store at +4°C short term (1-2 weeks). Upon delivery aliquot. Store at -20°C or -80°C. Avoid freeze / thaw cycle.
<b>Storage buffer</b>	pH: 7.00 Preservative: 0.01% Thimerosal (merthiolate) Constituents: 1.21% Tris, 0.75% Glycine, 10% Glycerol (glycerin, glycerine)
<b>Purity</b>	Immunogen affinity purified
<b>Clonality</b>	Polyclonal
<b>Isotype</b>	IgG

## Applications

**The Abpromise guarantee** Our **Abpromise guarantee** covers the use of ab137853 in the following tested applications. The application notes include recommended starting dilutions; optimal dilutions/concentrations should be determined by the end user.

Application	Abreviews	Notes
ICC/IF		1/100 - 1/1000.
WB		1/500 - 1/3000. Predicted molecular weight: 99 kDa.

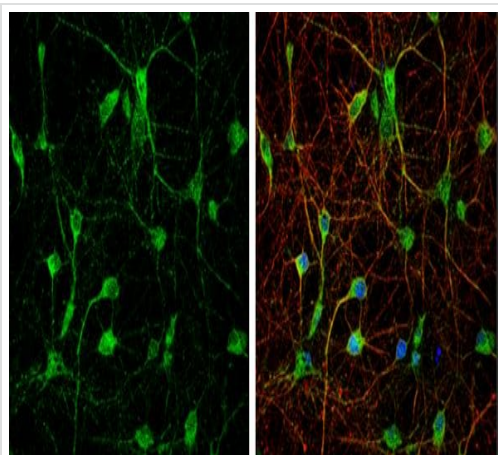
## Target

**Function** Receptor for glutamate. The activity of this receptor is mediated by a G-protein that inhibits adenylate cyclase activity.

**Sequence similarities** Belongs to the G-protein coupled receptor 3 family.

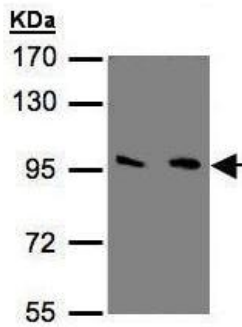
**Cellular localization** Cell membrane.

## Images



DIV9 rat E18 primary cortical neuron cells stained for mGluR3 (green) using ab137853 at 1/500 dilution in ICC/IF.

Immunocytochemistry/ Immunofluorescence - Anti-Metabotropic Glutamate Receptor 3/MGLUR3 antibody (ab137853)



Western blot - Anti-Metabotropic Glutamate Receptor 3/MGLUR3 antibody (ab137853)

**All lanes :** Anti-Metabotropic Glutamate Receptor 3/MGLUR3 antibody (ab137853) at 1/500 dilution

**Lane 1 :** HEK-293T whole cell lysate

**Lane 2 :** A431 whole cell lysate

Lysates/proteins at 30 µg per lane.

**Predicted band size:** 99 kDa

7.5% SDS PAGE

**Please note:** All products are "FOR RESEARCH USE ONLY. NOT FOR USE IN DIAGNOSTIC PROCEDURES"

### Our Abpromise to you: Quality guaranteed and expert technical support

- Replacement or refund for products not performing as stated on the datasheet
- Valid for 12 months from date of delivery
- Response to your inquiry within 24 hours
- We provide support in Chinese, English, French, German, Japanese and Spanish
- Extensive multi-media technical resources to help you
- We investigate all quality concerns to ensure our products perform to the highest standards

If the product does not perform as described on this datasheet, we will offer a refund or replacement. For full details of the Abpromise, please visit <https://www.abcam.com/abpromise> or contact our technical team.

### Terms and conditions

- Guarantee only valid for products bought direct from Abcam or one of our authorized distributors