

Product datasheet

Anti-Metabotropic Glutamate Receptor 3/MGLUR3 antibody [EPR24635-17] ab283572

Recombinant RabMAb

11 Images

Overview

Product name	Anti-Metabotropic Glutamate Receptor 3/MGLUR3 antibody [EPR24635-17]
Description	Rabbit monoclonal [EPR24635-17] to Metabotropic Glutamate Receptor 3/MGLUR3
Host species	Rabbit
Tested applications	Suitable for: WB, IHC-Fr, Flow Cyt, IP Unsuitable for: ICC/IF or IHC-P
Species reactivity	Reacts with: Mouse, Rat, Human
Immunogen	Recombinant fragment. This information is proprietary to Abcam and/or its suppliers.
Positive control	WB: Mouse brain and Rat brain tissue lysate IHC-Fr: Mouse cerebrum and Rat cerebrum tissue Flow Cyt: Mouse primary neuron and Rat primary neuron, 293T cells transfected with myc tagged human MGLUR3 construct. IP: Mouse brain and Rat brain.
General notes	This product is a recombinant monoclonal antibody, which offers several advantages including: <ul style="list-style-type: none"> - High batch-to-batch consistency and reproducibility - Improved sensitivity and specificity - Long-term security of supply - Animal-free production For more information see here . Our RabMAb [®] technology is a patented hybridoma-based technology for making rabbit monoclonal antibodies. For details on our patents, please refer to RabMAb[®] patents .

Properties

Form	Liquid
Storage instructions	Shipped at 4°C. Store at +4°C short term (1-2 weeks). Upon delivery aliquot. Store at -20°C. Avoid freeze / thaw cycle.
Storage buffer	pH: 7.20 Preservative: 0.01% Sodium azide Constituents: 59% PBS, 40% Glycerol (glycerin, glycerine), 0.05% BSA
Purity	Protein A purified

Clonality Monoclonal
Clone number EPR24635-17
Isotype IgG

Applications

The Abpromise guarantee Our **Abpromise guarantee** covers the use of ab283572 in the following tested applications. The application notes include recommended starting dilutions; optimal dilutions/concentrations should be determined by the end user.

Application	Abreviews	Notes
WB		1/1000. Predicted molecular weight: 99 kDa.
IHC-Fr		1/100.
Flow Cyt		1/500.
IP		1/30.

Application notes Is unsuitable for ICC/IF or IHC-P.

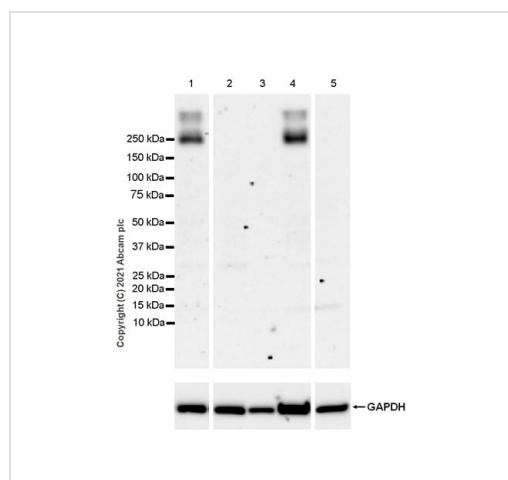
Target

Function Receptor for glutamate. The activity of this receptor is mediated by a G-protein that inhibits adenylate cyclase activity.

Sequence similarities Belongs to the G-protein coupled receptor 3 family.

Cellular localization Cell membrane.

Images



Western blot - Anti-Metabotropic Glutamate Receptor 3/MGLUR3 antibody [EPR24635-17] (ab283572)

All lanes : Anti-Metabotropic Glutamate Receptor 3/MGLUR3 antibody [EPR24635-17] (ab283572) at 1/1000 dilution

Lane 1 : Mouse brain tissue lysate

Lane 2 : Mouse kidney tissue lysate

Lane 3 : Mouse testis tissue lysate

Lane 4 : Rat brain tissue lysate

Lane 5 : Rat testis tissue lysate

Lysates/proteins at 20 µg per lane.

Secondary

All lanes : Goat Anti-Rabbit IgG H&L (HRP) (**ab97051**) at 1/100000 dilution (Goat Anti-Rabbit IgG, (H+L), Peroxidase conjugated)

Predicted band size: 99 kDa

Observed band size: 250 kDa

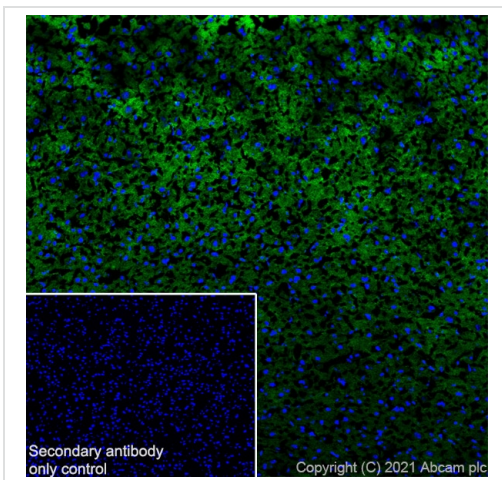
Blocking and diluting buffer and concentration: 5% NFD/MTBST

Negative control: kidney, testis (PMID: 8840013).

The molecular weight observed is consistent with what has been described in the literature (PMID: 27130562).

Samples are non-boiled as boiling may cause protein aggregates.

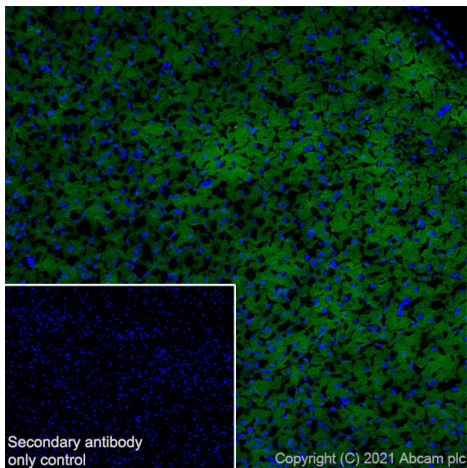
Exposure time: 136 seconds



Immunohistochemical analysis of 4% PFA-fixed, 0.2% Triton X-100 permeabilized frozen mouse cerebrum (fresh) tissue labeling Metabotropic glutamate receptor 3/MGLUR3 with ab283572 at 1/100 dilution (5.85 µg/ml) followed by **ab150081** Goat Anti-Rabbit IgG H&L (Alexa Fluor® 488) preadsorbed at 1/1000 dilution (2 µg/ml, Green). Positive staining on mouse cerebrum is observed. The nuclear counterstain was DAPI (Blue).

Secondary antibody control: Secondary antibody is **ab150081** Goat Anti-Rabbit IgG H&L (Alexa Fluor® 488) preadsorbed at 1/1000 dilution (2 µg/ml)

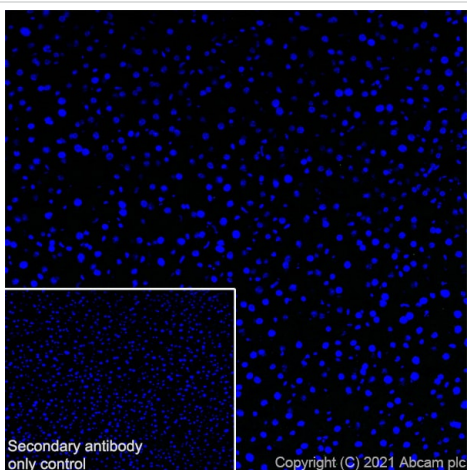
Immunohistochemistry (Frozen sections) - Anti-Metabotropic Glutamate Receptor 3/MGLUR3 antibody [EPR24635-17] (ab283572)



Immunohistochemistry (Frozen sections) - Anti-Metabotropic Glutamate Receptor 3/MGLUR3 antibody [EPR24635-17] (ab283572)

Immunohistochemical analysis of 4% PFA-fixed, 0.2% Triton X-100 permeabilized frozen rat cerebrum (fresh) tissue labeling Metabotropic glutamate receptor 3/MGLUR3 with ab283572 at 1/100 dilution (5.85 µg/ml) followed by **ab150081** Goat Anti-Rabbit IgG H&L (Alexa Fluor® 488) preadsorbed at 1/1000 dilution (2 µg/ml, Green). Positive staining on rat cerebrum is observed. The nuclear counterstain was DAPI (Blue).

Secondary antibody control: Secondary antibody is **ab150081** Goat Anti-Rabbit IgG H&L (Alexa Fluor® 488) preadsorbed at 1/1000 dilution (2 µg/ml)

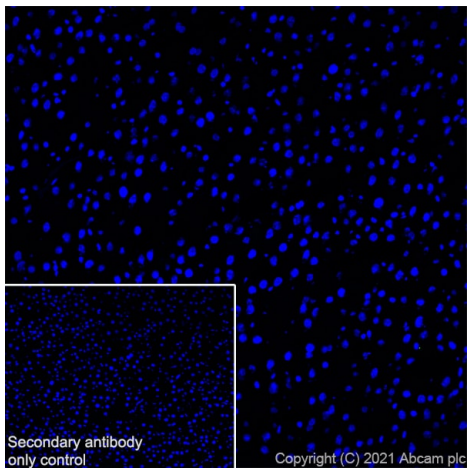


Immunohistochemistry (Frozen sections) - Anti-Metabotropic Glutamate Receptor 3/MGLUR3 antibody [EPR24635-17] (ab283572)

Immunohistochemical analysis of 4% PFA-fixed, 0.2% Triton X-100 permeabilized frozen mouse liver (fresh) tissue labeling Metabotropic glutamate receptor 3/MGLUR3 with ab283572 at 1/100 dilution (5.85 µg/ml) followed by **ab150081** Goat Anti-Rabbit IgG H&L (Alexa Fluor® 488) preadsorbed at 1/1000 dilution (2 µg/ml, Green). The nuclear counterstain was DAPI (Blue). No staining on mouse liver.

Negative control: liver (PMID: 9001707) is observed.

Secondary antibody control: Secondary antibody is **ab150081** Goat Anti-Rabbit IgG H&L (Alexa Fluor® 488) preadsorbed at 1/1000 dilution (2 µg/ml)

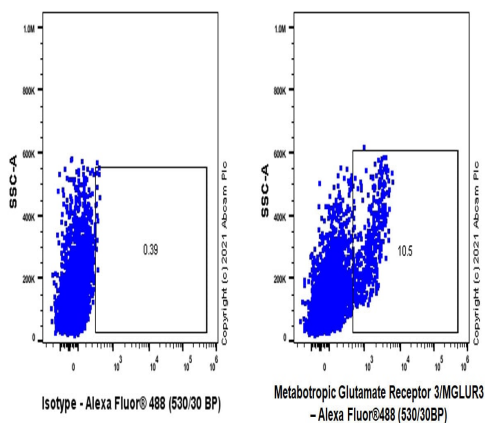


Immunohistochemical analysis of 4% PFA-fixed, 0.2% Triton X-100 permeabilized frozen rat liver (fresh) tissue labeling Metabotropic glutamate receptor 3/MGLUR3 with ab283572 at 1/100 dilution (5.85 µg/ml) followed by **ab150081** Goat Anti-Rabbit IgG H&L (Alexa Fluor® 488) preadsorbed at 1/1000 dilution (2 µg/ml, Green). The nuclear counterstain was DAPI (Blue). No staining on rat liver.

Negative control: liver (PMD: 9001707) is observed.

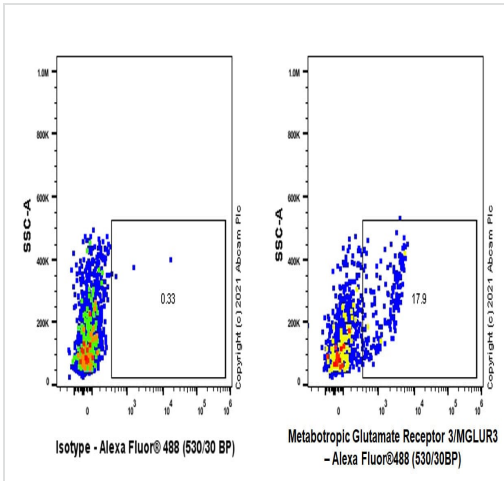
Secondary antibody control: Secondary antibody is **ab150081** Goat Anti-Rabbit IgG H&L (Alexa Fluor® 488) preadsorbed at 1/1000 dilution (2 µg/ml)

Immunohistochemistry (Frozen sections) - Anti-Metabotropic Glutamate Receptor 3/MGLUR3 antibody [EPR24635-17] (ab283572)



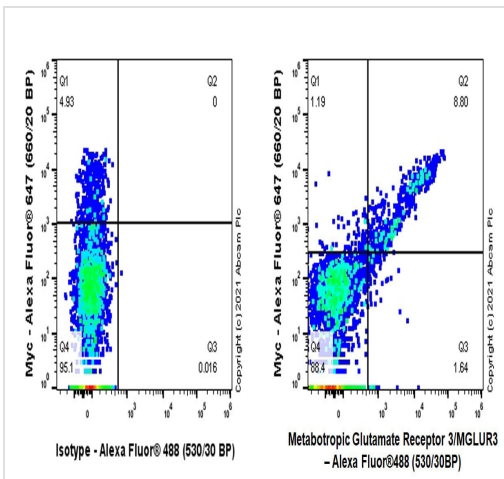
Flow cytometric analysis of mouse primary neuron cells labelling Metabotropic glutamate receptor 3/MGLUR3 with ab283572 at 1/500 dilution (0.1 µg / Right) compared with a Rabbit monoclonal IgG (**ab172730** / Left) isotype control. Goat F(ab')₂ Anti-Rabbit IgG(DyLight® 488, **ab98507**) at 1/500 dilution was used as the secondary antibody. Gated on viable cells.

Flow Cytometry - Anti-Metabotropic Glutamate Receptor 3/MGLUR3 antibody [EPR24635-17] (ab283572)



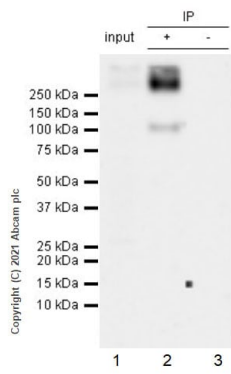
Flow Cytometry - Anti-Metabotropic Glutamate Receptor 3/MGLUR3 antibody [EPR24635-17] (ab283572)

Flow cytometric analysis of rat primary neuron cells labelling Metabotropic glutamate receptor 3/MGLUR3 with ab283572 at 1/500 dilution (0.1 µg / Right) compared with a Rabbit monoclonal IgG (**ab172730** / Left) isotype control. Goat F(ab')₂ Anti-Rabbit IgG(DyLight[®] 488, **ab98507**) at 1/500 dilution was used as the secondary antibody. Gated on viable cells.



Flow Cytometry - Anti-Metabotropic Glutamate Receptor 3/MGLUR3 antibody [EPR24635-17] (ab283572)

Flow cytometric analysis of 2% paraformaldehyde fixed 0.1% Tween-20 permeabilized 293T (Human embryonic kidney epithelial cell) cells transfected with myc tagged human MGLUR3 construct labelling Metabotropic glutamate receptor 3/MGLUR3 with ab283572 at 1/500 dilution (0.1 µg / Right), compared with a Rabbit monoclonal IgG (**ab172730** / Left) isotype control. A Goat F(ab')₂ Anti-Rabbit IgG(DyLight[®] 488, **ab98507**) at 1/500 dilution was used as the secondary antibody. Cells were surface stained with rabbit IgG or ab283572. Then fixed with 2% PFA for 10 minutes followed by intracellularly stained with anti-myc tag conjugated to Alexa Fluor[®] 647.



Immunoprecipitation - Anti-Metabotropic Glutamate Receptor 3/MGLUR3 antibody [EPR24635-17] (ab283572)

Metabotropic glutamate receptor 3/MGLUR3 was immunoprecipitated from 0.35 mg mouse brain tissue lysate with ab283572 at 1/30 dilution (2µg in 0.35mg lysates). Western blot was performed on the immunoprecipitate using ab283572 at 1/1000 dilution. VeriBlot for IP secondary antibody(HRP) ([ab131366](#)) was used at 1/5000 dilution.

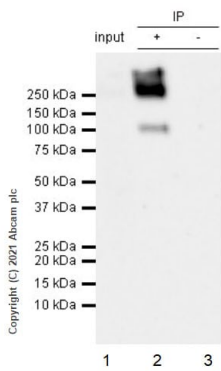
Lane 1: Mouse brain tissue lysate 10µg

Lane 2: ab283572 IP in Mouse brain tissue lysate

Lane 3: Rabbit monoclonal IgG ([ab172730](#)) instead of ab283572 in mouse brain tissue lysate

Blocking and dilution buffer and concentration: 5% NFDm/TBST.

Exposure time: 32 seconds



Immunoprecipitation - Anti-Metabotropic Glutamate Receptor 3/MGLUR3 antibody [EPR24635-17] (ab283572)

Metabotropic glutamate receptor 3/MGLUR3 was immunoprecipitated from 0.35 mg rat brain tissue lysate with ab283572 at 1/30 dilution (2µg in 0.35mg lysates). Western blot was performed on the immunoprecipitate using ab283572 at 1/1000 dilution. VeriBlot for IP secondary antibody(HRP) ([ab131366](#)) was used at 1/5000 dilution.

Lane 1: Rat brain tissue lysate 10µg

Lane 2: ab283572 IP in Rat brain tissue lysate

Lane 3: Rabbit monoclonal IgG ([ab172730](#)) instead of ab283572 in rat brain tissue lysate

Blocking and dilution buffer and concentration: 5% NFDm/TBST.

Exposure time: 32 seconds

Why choose a recombinant antibody?



Research with confidence
Consistent and reproducible results



Long-term and scalable supply
Recombinant technology



Success from the first experiment
Confirmed specificity



Ethical standards compliant
Animal-free production

Anti-Metabotropic Glutamate Receptor 3/MGLUR3 antibody [EPR24635-17] (ab283572)

Please note: All products are "FOR RESEARCH USE ONLY. NOT FOR USE IN DIAGNOSTIC PROCEDURES"

Our Abpromise to you: Quality guaranteed and expert technical support

- Replacement or refund for products not performing as stated on the datasheet
- Valid for 12 months from date of delivery
- Response to your inquiry within 24 hours
- We provide support in Chinese, English, French, German, Japanese and Spanish
- Extensive multi-media technical resources to help you
- We investigate all quality concerns to ensure our products perform to the highest standards

If the product does not perform as described on this datasheet, we will offer a refund or replacement. For full details of the Abpromise, please visit <https://www.abcam.com/abpromise> or contact our technical team.

Terms and conditions

- Guarantee only valid for products bought direct from Abcam or one of our authorized distributors