

Anti-Metabotropic Glutamate Receptor 3/MGLUR3 antibody [EPR9009(2)] ab166608

Recombinant RabMAb

[4 References](#) [9 Images](#)

Overview

Product name	Anti-Metabotropic Glutamate Receptor 3/MGLUR3 antibody [EPR9009(2)]
Description	Rabbit monoclonal [EPR9009(2)] to Metabotropic Glutamate Receptor 3/MGLUR3
Host species	Rabbit
Tested applications	Suitable for: Flow Cyt, WB, ICC/IF, Indirect ELISA Unsuitable for: IHC-P or IP
Species reactivity	Reacts with: Mouse, Rat, Human
Immunogen	Synthetic peptide within Human Metabotropic Glutamate Receptor 3/MGLUR3. The exact sequence is proprietary. Database link: Q14832 (Peptide available as ab208352)
Positive control	WB: Mouse and Rat brain tissue lysate. Human cerebellum and hypothalamus tissue lysates; ICC/IF: Mouse primary neuron cells. Flow cyt: Mouse primary neuron and Neuro-2a cells
General notes	This product is a recombinant monoclonal antibody, which offers several advantages including: <ul style="list-style-type: none">- High batch-to-batch consistency and reproducibility- Improved sensitivity and specificity- Long-term security of supply- Animal-free production For more information see here . Our RabMAb [®] technology is a patented hybridoma-based technology for making rabbit monoclonal antibodies. For details on our patents, please refer to RabMAb[®] patents .

Properties

Form	Liquid
Storage instructions	Shipped at 4°C. Upon delivery aliquot and store at -20°C. Avoid freeze / thaw cycles.
Storage buffer	pH: 7.2 Preservative: 0.01% Sodium azide Constituents: 9% PBS, 40% Glycerol (glycerin, glycerine), 0.05% BSA, 50% Tissue culture supernatant

Purity	Protein A purified
Clonality	Monoclonal
Clone number	EPR9009(2)
Isotype	IgG

Applications

The Abpromise guarantee Our **Abpromise guarantee** covers the use of ab166608 in the following tested applications.

The application notes include recommended starting dilutions; optimal dilutions/concentrations should be determined by the end user.

Application	Abreviews	Notes
Flow Cyt		1/500.
WB		1/1000 - 1/5000. Detects a band of approximately 110, 220 kDa (predicted molecular weight: 99 kDa).
ICC/IF		1/250.
Indirect ELISA		Use at an assay dependent concentration.

Application notes Is unsuitable for IHC-P or IP.

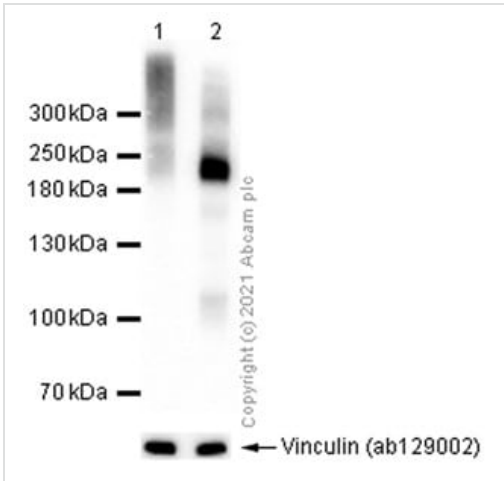
Target

Function Receptor for glutamate. The activity of this receptor is mediated by a G-protein that inhibits adenylate cyclase activity.

Sequence similarities Belongs to the G-protein coupled receptor 3 family.

Cellular localization Cell membrane.

Images



Western blot - Anti-Metabotropic Glutamate Receptor 3/MGLUR3 antibody [EPR9009(2)] (ab166608)

All lanes : Anti-Metabotropic Glutamate Receptor 3/MGLUR3 antibody [EPR9009(2)] (ab166608) at 1/1000 dilution

Lane 1 : Rat brain lysate boiled

Lane 2 : Rat brain lysate unboiled

Lysates/proteins at 15 µg per lane.

Secondary

All lanes : Goat Anti-Rabbit IgG H&L (HRP) (**ab97051**) at 1/20000 dilution

Predicted band size: 99 kDa

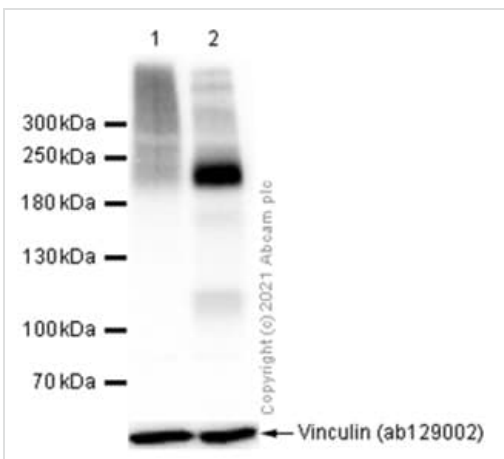
Observed band size: 220 kDa

Exposure time: 7 seconds

Blocking buffer and concentration: 5% NFDm/TBST.

Diluting buffer and concentration: 5% NFDm/TBST.

We recommend not to boil the samples after lysis to get desired WB results.



Western blot - Anti-Metabotropic Glutamate Receptor 3/MGLUR3 antibody [EPR9009(2)] (ab166608)

All lanes : Anti-Metabotropic Glutamate Receptor 3/MGLUR3 antibody [EPR9009(2)] (ab166608) at 1/1000 dilution

Lane 1 : Mouse brain lysate boiled

Lane 2 : Mouse brain lysate unboiled

Lysates/proteins at 20 µg per lane.

Secondary

All lanes : Goat Anti-Rabbit IgG H&L (HRP) (**ab97051**) at 1/20000 dilution

Predicted band size: 99 kDa

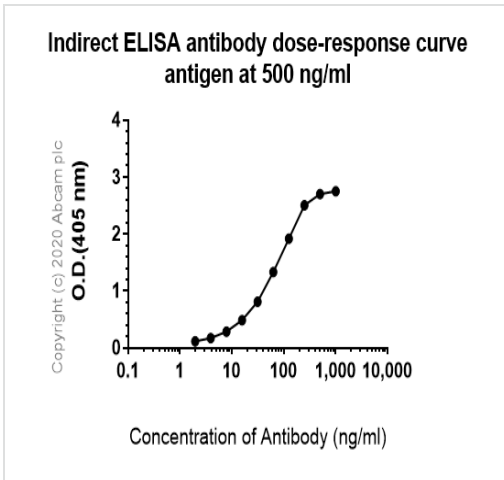
Observed band size: 220 kDa

Exposure time: 3 seconds

Blocking buffer and concentration: 5% NFDm/TBST.

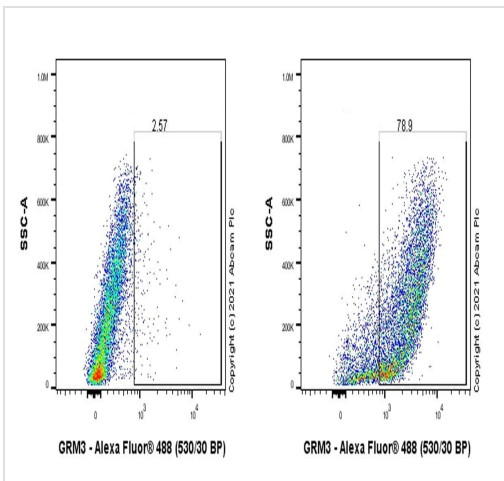
Diluting buffer and concentration: 5% NFD/MBST.

We recommend not to boil the samples after lysis to get desired WB results.



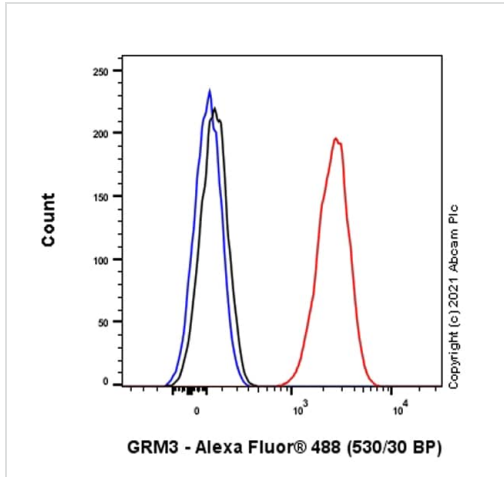
Indirect ELISA - Anti-Metabotropic Glutamate Receptor 3/MGLUR3 antibody [EPR9009(2)] (ab166608)

ELISA analysis of Human MGLUR3 recombinant protein at 500ng/ml with ab166608. An Alkaline Phosphatase-conjugated AffiniPure Goat Anti-Rabbit IgG (H+L) at 1/2500 dilution was used as the secondary antibody.



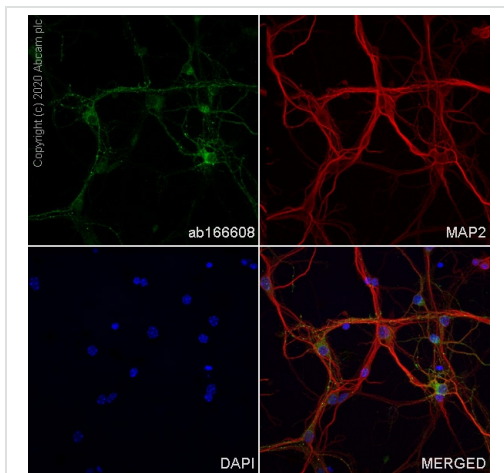
Flow Cytometry - Anti-Metabotropic Glutamate Receptor 3/MGLUR3 antibody [EPR9009(2)] (ab166608)

Flow cytometric analysis of 4% paraformaldehyde fixed 90% methanol permeabilized Mouse primary neuron cells labelling Metabotropic Glutamate Receptor 3/MGLUR3 with ab166608 at 1/500 dilution (0.1ug) / Right compared with a Rabbit monoclonal IgG (**ab172730**) / Left isotype control and an unlabelled control (cells without incubation with primary antibody and secondary antibody) (Blue). A Goat anti rabbit IgG (Alexa Fluor 488, **ab150077**) at 1/2000 dilution was used as the secondary antibody.



Flow Cytometry - Anti-Metabotropic Glutamate Receptor 3/MGLUR3 antibody [EPR9009(2)] (ab166608)

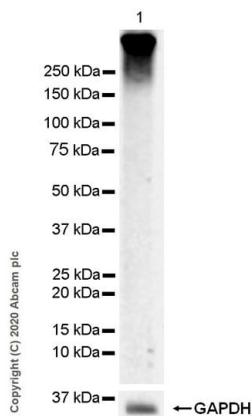
Flow cytometric analysis of 4% paraformaldehyde fixed 90% methanol permeabilized Neuro-2a (Mouse neuroblastoma neuroblast) cells labelling Metabotropic Glutamate Receptor 3/MGLUR3 with ab166608 at 1/500 dilution (0.1 ug) (Red) compared with a Rabbit monoclonal IgG ([ab172730](#)) (Black) isotype control and an unlabelled control (cells without incubation with primary antibody and secondary antibody) (Blue). A Goat anti rabbit IgG (Alexa Fluor 488, [ab150077](#)) at 1/2000 dilution was used as the secondary antibody.



Immunocytochemistry/ Immunofluorescence - Anti-Metabotropic Glutamate Receptor 3/MGLUR3 antibody [EPR9009(2)] (ab166608)

Immunofluorescent analysis of 4% Paraformaldehyde-fixed, 0.1% TritonX-100 permeabilized mouse primary neuron cells labelling Metabotropic Glutamate Receptor 3/MGLUR3 with ab166608 at 1/250 dilution, followed by [ab150077](#) Goat Anti-Rabbit IgG H&L (Alexa Fluor® 488) antibody at 1/1000 2 ug/ml dilution (Green). [ab11267](#) Anti-MAP2 mouse monoclonal antibody was used to counterstain tubulin at 1/500 4 dilution (Red). The Nuclear counterstain was DAPI (Blue).

Secondary antibody only control: Secondary antibody is [ab150077](#) Goat Anti-Rabbit IgG H&L (Alexa Fluor® 488) at 1000 2 ug/ml dilution.



Western blot - Anti-Metabotropic Glutamate Receptor 3/MGLUR3 antibody [EPR9009(2)] (ab166608)

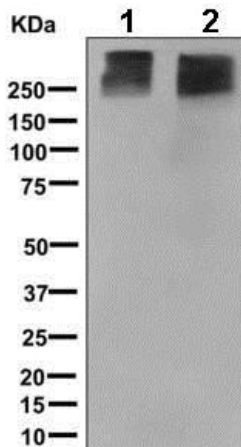
Anti-Metabotropic Glutamate Receptor 3/MGLUR3 antibody [EPR9009(2)] (ab166608) at 1/1000 dilution + Mouse brain tissue lysate at 20 µg

Secondary

Goat Anti-Rabbit IgG H&L (HRP) (ab97051) at 1/20000 dilution

Predicted band size: 99 kDa

This blot was developed using a higher sensitivity ECL substrate.



Western blot - Anti-Metabotropic Glutamate Receptor 3/MGLUR3 antibody [EPR9009(2)] (ab166608)

All lanes : Anti-Metabotropic Glutamate Receptor 3/MGLUR3 antibody [EPR9009(2)] (ab166608) at 1/1000 dilution

Lane 1 : Human cerebellum lysate

Lane 2 : Human hypothalamus lysate

Lysates/proteins at 10 µg per lane.

Secondary

All lanes : HRP labelled goat anti-rabbit at 1/2000 dilution

Predicted band size: 99 kDa

Observed band size: 220 kDa

Why choose a recombinant antibody?



Research with confidence
Consistent and reproducible results



Long-term and scalable supply
Recombinant technology



Success from the first experiment
Confirmed specificity



Ethical standards compliant
Animal-free production

Anti-Metabotropic Glutamate Receptor 3/MGLUR3 antibody [EPR9009(2)] (ab166608)

Please note: All products are "FOR RESEARCH USE ONLY. NOT FOR USE IN DIAGNOSTIC PROCEDURES"

Our Abpromise to you: Quality guaranteed and expert technical support

- Replacement or refund for products not performing as stated on the datasheet
- Valid for 12 months from date of delivery
- Response to your inquiry within 24 hours
- We provide support in Chinese, English, French, German, Japanese and Spanish
- Extensive multi-media technical resources to help you
- We investigate all quality concerns to ensure our products perform to the highest standards

If the product does not perform as described on this datasheet, we will offer a refund or replacement. For full details of the Abpromise, please visit <https://www.abcam.com/abpromise> or contact our technical team.

Terms and conditions

- Guarantee only valid for products bought direct from Abcam or one of our authorized distributors