

Anti-Metabotropic Glutamate Receptor 4/MGLUR4 antibody [EPR19280] ab184302

Recombinant RabMAb

6 Images

Overview

Product name	Anti-Metabotropic Glutamate Receptor 4/MGLUR4 antibody [EPR19280]
Description	Rabbit monoclonal [EPR19280] to Metabotropic Glutamate Receptor 4/MGLUR4
Host species	Rabbit
Tested applications	Suitable for: IP, WB Unsuitable for: Flow Cyt or ICC
Species reactivity	Reacts with: Mouse, Rat, Human
Immunogen	Synthetic peptide. This information is proprietary to Abcam and/or its suppliers.
Positive control	WB: Human, mouse and rat cerebellum lysates; mouse cerebellum lysate (2%SDS treated, not boiled). IP: Mouse and rat cerebellum lysates.
General notes	<p>This product is a recombinant monoclonal antibody, which offers several advantages including:</p> <ul style="list-style-type: none"> - High batch-to-batch consistency and reproducibility - Improved sensitivity and specificity - Long-term security of supply - Animal-free production <p>For more information see here.</p> <p>Our RabMAb[®] technology is a patented hybridoma-based technology for making rabbit monoclonal antibodies. For details on our patents, please refer to RabMAb[®] patents.</p>

Properties

Form	Liquid
Storage instructions	Shipped at 4°C. Store at +4°C short term (1-2 weeks). Upon delivery aliquot. Store at -20°C long term. Avoid freeze / thaw cycle.
Storage buffer	pH: 7.2 Preservative: 0.01% Sodium azide Constituents: 59% PBS, 40% Glycerol (glycerin, glycerine), 0.05% BSA
Purity	Protein A purified
Clonality	Monoclonal

Clone number EPR19280

Isotype IgG

Applications

The Abpromise guarantee Our **Abpromise guarantee** covers the use of ab184302 in the following tested applications. The application notes include recommended starting dilutions; optimal dilutions/concentrations should be determined by the end user.

Application	Abreviews	Notes
IP		1/40.
WB		1/1000. Detects a band of approximately 102 kDa (predicted molecular weight: 102 kDa).

Application notes Is unsuitable for Flow Cyt or ICC.

Target

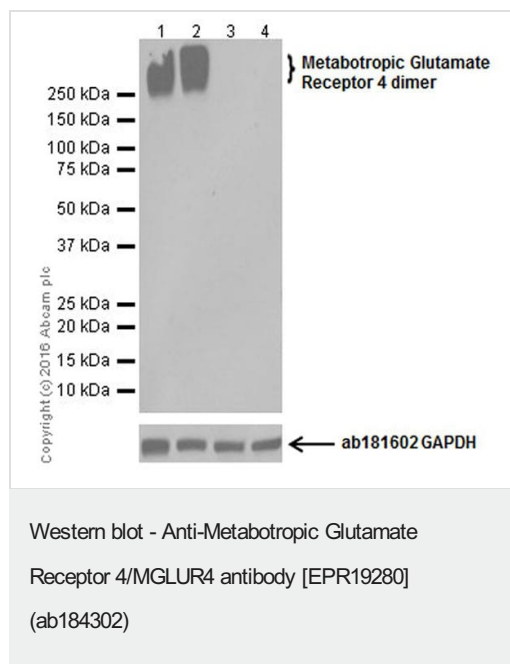
Function Receptor for glutamate. The activity of this receptor is mediated by a G-protein that inhibits adenylate cyclase activity.

Tissue specificity Strongly expressed in the cerebellum. Expressed at low levels in hippocampus, hypothalamus and thalamus. No expression detected in liver.

Sequence similarities Belongs to the G-protein coupled receptor 3 family.

Cellular localization Cell membrane.

Images



All lanes : Anti-Metabotropic Glutamate Receptor 4/MGLUR4 antibody [EPR19280] (ab184302) at 1/1000 dilution

Lane 1 : Mouse cerebellum tissue lysate

Lane 2 : Rat cerebellum tissue lysate

Lane 3 : Mouse liver tissue lysate

Lane 4 : Rat liver tissue lysate

Lysates/proteins at 20 µg per lane.

Secondary

All lanes : Goat Anti-Rabbit IgG H&L (HRP) (**ab97051**) at 1/100000 dilution

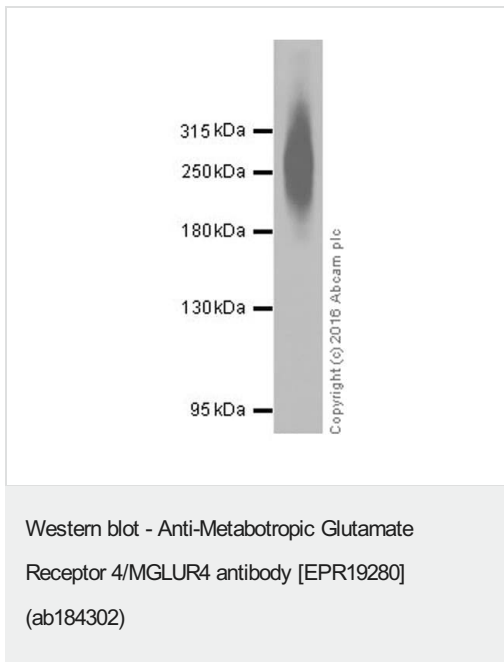
Predicted band size: 102 kDa

Observed band size: ~300 kDa

Exposure time: 3 minutes

Blocking/Dilution buffer: 5% NFDM/TBST.

This protein is specially expressed at cerebellum and the expression pattern is consistent with the literature (PMID:8463825, PMID:22528491), though results may vary depending on percentage acrylamide gel used.



Anti-Metabotropic Glutamate Receptor 4/MGLUR4 antibody [EPR19280] (ab184302) at 1/1000 dilution + Mouse cerebellum lysate (2%SDS treated, not boiled) at 20 µg

Secondary

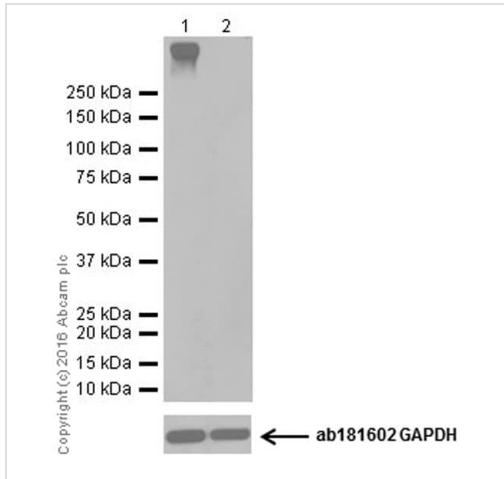
Goat Anti-Rabbit IgG H&L (HRP) ([ab97051](#)) at 1/100000 dilution

Predicted band size: 102 kDa

Exposure time: 3 minutes

Blocking/Dilution buffer: 5% NFDM/TBST.

This protein is specially expressed at cerebellum and the expression pattern is consistent with the literature (PMID:8463825, PMID:22528491), though results may vary depending on percentage acrylamide gel used.



Western blot - Anti-Metabotropic Glutamate Receptor 4/MGLUR4 antibody [EPR19280] (ab184302)

All lanes : Anti-Metabotropic Glutamate Receptor 4/MGLUR4 antibody [EPR19280] (ab184302) at 1/1000 dilution

Lane 1 : Human cerebellum lysate

Lane 2 : Human fetal liver tissue lysate

Lysates/proteins at 20 µg per lane.

Secondary

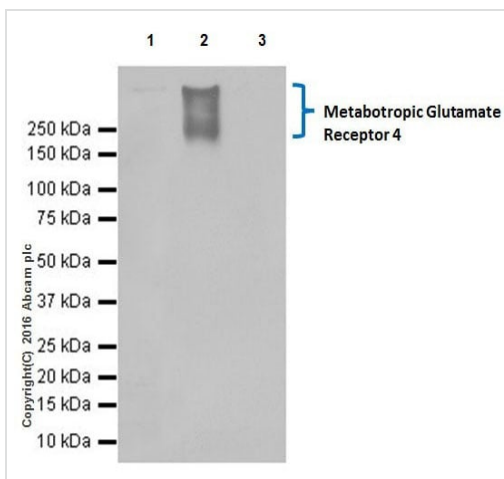
All lanes : Goat Anti-Rabbit IgG Peroxidase Conjugate, specific to the non-reduced form of IgG at 1/100000 dilution

Predicted band size: 102 kDa

Exposure time: 3 minutes

Blocking/Dilution buffer: 5% NFDM/TBST.

This protein is specially expressed at cerebellum and the expression pattern is consistent with the literature (PMID:8463825, PMID:22528491), though results may vary depending on percentage acrylamide gel used.



Immunoprecipitation - Anti-Metabotropic Glutamate Receptor 4/MGLUR4 antibody [EPR19280] (ab184302)

Metabotropic Glutamate Receptor 4/MGLUR4 was immunoprecipitated from 1 mg of Mouse cerebellum lysate with ab184302 at 1/40 dilution. Western blot was performed from the immunoprecipitate using ab184302 at 1/1000 dilution. VeriBlot for IP Detection Reagent (HRP) ([ab131366](#)), was used for detection at 1/10000 dilution.

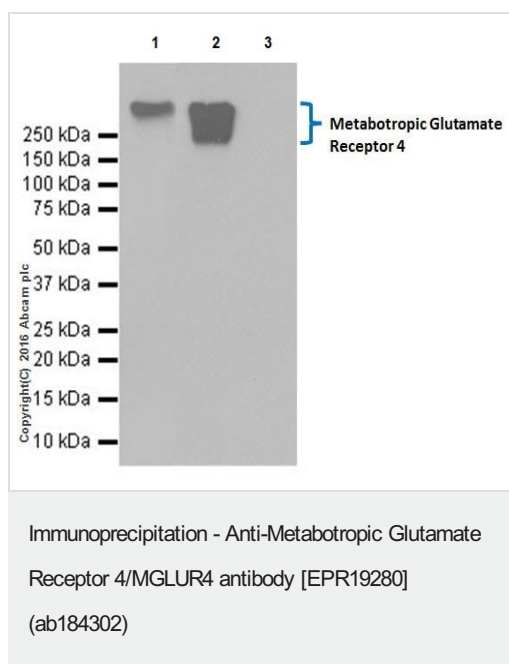
Lane 1: Mouse cerebellum lysate, 10µg (Input).

Lane 2: ab184302 IP in Mouse cerebellum lysate.

Lane 3: Rabbit IgG, monoclonal [EPR25A]-Isotype Control ([ab172730](#)) instead of ab184302 in Mouse cerebellum lysate.

Blocking and dilution buffer and concentration: 5% NFDM/TBST.

Exposure time: 30 seconds.



Metabotropic Glutamate Receptor 4/MGLUR4 was immunoprecipitated from 1 mg of Rat cerebellum lysate with ab184302 at 1/40 dilution. Western blot was performed from the immunoprecipitate using ab184302 at 1/1000 dilution. VeriBlot for IP Detection Reagent (HRP) ([ab131366](#)), was used for detection at 1/10000 dilution.

Lane 1: Rat cerebellum lysate, 10µg (Input).

Lane 2: ab184302 IP in Rat cerebellum lysate.

Lane 3: Rabbit IgG, monoclonal [EPR25A] - Isotype Control ([ab172730](#)) instead of ab184302 in Rat cerebellum lysate.

Blocking and dilution buffer and concentration: 5% NFDm/TBST.

Exposure time: 30 seconds.

Why choose a recombinant antibody?

Research with confidence
Consistent and reproducible results

Long-term and scalable supply
Recombinant technology

Success from the first experiment
Confirmed specificity

Ethical standards compliant
Animal-free production

Anti-Metabotropic Glutamate Receptor 4/MGLUR4 antibody [EPR19280] (ab184302)

Please note: All products are "FOR RESEARCH USE ONLY. NOT FOR USE IN DIAGNOSTIC PROCEDURES"

Our Abpromise to you: Quality guaranteed and expert technical support

- Replacement or refund for products not performing as stated on the datasheet
- Valid for 12 months from date of delivery
- Response to your inquiry within 24 hours
- We provide support in Chinese, English, French, German, Japanese and Spanish

- Extensive multi-media technical resources to help you
- We investigate all quality concerns to ensure our products perform to the highest standards

If the product does not perform as described on this datasheet, we will offer a refund or replacement. For full details of the Abpromise, please visit <https://www.abcam.com/abpromise> or contact our technical team.

Terms and conditions

- Guarantee only valid for products bought direct from Abcam or one of our authorized distributors