


Product datasheet

Anti-Metabotropic Glutamate Receptor 7/MGLUR7 antibody ab53705

★★★★★ [1 Abreviews](#) [2 References](#) [2 Images](#)

Overview

Product name	Anti-Metabotropic Glutamate Receptor 7/MGLUR7 antibody
Description	Rabbit polyclonal to Metabotropic Glutamate Receptor 7/MGLUR7
Host species	Rabbit
Tested applications	Suitable for: WB, IHC-P
Species reactivity	Reacts with: Human Predicted to work with: Mouse, Rat 
Immunogen	Synthetic peptide corresponding to Human Metabotropic Glutamate Receptor 7/MGLUR7.
General notes	<p>The Life Science industry has been in the grips of a reproducibility crisis for a number of years. Abcam is leading the way in addressing this with our range of recombinant monoclonal antibodies and knockout edited cell lines for gold-standard validation. Please check that this product meets your needs before purchasing.</p> <p>If you have any questions, special requirements or concerns, please send us an inquiry and/or contact our Support team ahead of purchase. Recommended alternatives for this product can be found below, along with publications, customer reviews and Q&As</p>

Properties

Form	Liquid
Storage instructions	Shipped at 4°C. Upon delivery aliquot and store at -20°C. Avoid freeze / thaw cycles.
Storage buffer	<p>pH: 7.40</p> <p>Preservative: 0.02% Sodium azide</p> <p>Constituents: 50% Glycerol (glycerin, glycerine), 0.87% Sodium chloride, PBS</p> <p>Without Mg+2 and Ca+2</p>
Purity	Immunogen affinity purified
Clonality	Polyclonal
Isotype	IgG

Applications

Applications

The Abpromise guarantee

Our **Abpromise guarantee** covers the use of ab53705 in the following tested applications.

The application notes include recommended starting dilutions; optimal dilutions/concentrations should be determined by the end user.

Application	Abreviews	Notes
WB		1/500 - 1/1000. Detects a band of approximately 102 kDa (predicted molecular weight: 102 kDa).
IHC-P	★★★★★ (1)	Use at an assay dependent concentration.

Target

Function

Receptor for glutamate. The activity of this receptor is mediated by a G-protein that inhibits adenylate cyclase activity.

Tissue specificity

Expressed in many areas of the brain, especially in the cerebral cortex, hippocampus, and cerebellum. Expression of GRM7 isoforms in non-neuronal tissues appears to be restricted to isoform 3 and isoform 4.

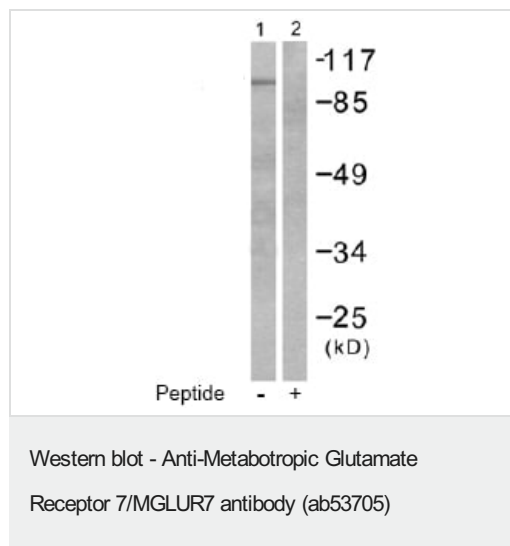
Sequence similarities

Belongs to the G-protein coupled receptor 3 family.

Cellular localization

Cell membrane.

Images



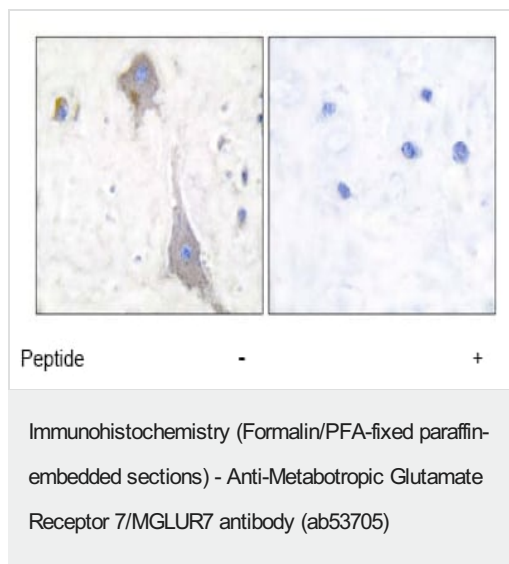
All lanes : Anti-Metabotropic Glutamate Receptor 7/MGLUR7 antibody (ab53705) at 1/500 dilution

Lane 1 : HuvEc cell extract

Lane 2 : HuvEc cell extract with immunising peptide

Predicted band size: 102 kDa

Observed band size: 102 kDa



ab53705 at 1/50 dilution staining Metabotropic Glutamate Receptor 7/MGLUR7 in human brain by Immunohistochemistry, Paraffin embedded tissue, in the absence or presence of the immunising peptide.

Please note: All products are "FOR RESEARCH USE ONLY. NOT FOR USE IN DIAGNOSTIC PROCEDURES"

Our Abpromise to you: Quality guaranteed and expert technical support

- Replacement or refund for products not performing as stated on the datasheet
- Valid for 12 months from date of delivery
- Response to your inquiry within 24 hours
- We provide support in Chinese, English, French, German, Japanese and Spanish
- Extensive multi-media technical resources to help you
- We investigate all quality concerns to ensure our products perform to the highest standards

If the product does not perform as described on this datasheet, we will offer a refund or replacement. For full details of the Abpromise, please visit <https://www.abcam.com/abpromise> or contact our technical team.

Terms and conditions

- Guarantee only valid for products bought direct from Abcam or one of our authorized distributors