

Product datasheet


Anti-Methionyl Aminopeptidase 1/MAP 1 antibody [EPR15452(B)] ab185540

Recombinant

RabMAb

7 Images

Overview

Product name	Anti-Methionyl Aminopeptidase 1/MAP 1 antibody [EPR15452(B)]
Description	Rabbit monoclonal [EPR15452(B)] to Methionyl Aminopeptidase 1/MAP 1
Host species	Rabbit
Tested applications	Suitable for: Flow Cyt (Intra), WB, IHC-P, ICC/IF
Species reactivity	Reacts with: Rat, Human Predicted to work with: Mouse 
Immunogen	Synthetic peptide. This information is proprietary to Abcam and/or its suppliers.
Positive control	A375 and HUVEC lysate. Human cervix carcinoma and Rat skeletal muscle tissue. A549 and A375 cells.
General notes	<p>This product is a recombinant monoclonal antibody, which offers several advantages including:</p> <ul style="list-style-type: none"> - High batch-to-batch consistency and reproducibility - Improved sensitivity and specificity - Long-term security of supply - Animal-free production <p>For more information see here.</p> <p>Our RabMAb[®] technology is a patented hybridoma-based technology for making rabbit monoclonal antibodies. For details on our patents, please refer to RabMAb[®] patents.</p>

Properties

Form	Liquid
Storage instructions	Shipped at 4°C. Store at +4°C short term (1-2 weeks). Upon delivery aliquot. Store at -20°C long term. Avoid freeze / thaw cycle.
Storage buffer	pH: 7.2 Preservative: 0.01% Sodium azide Constituents: 59% PBS, 40% Glycerol (glycerin, glycerine), 0.05% BSA
Purity	Protein A purified
Clonality	Monoclonal

Clone number	EPR15452(B)
Isotype	IgG

Applications

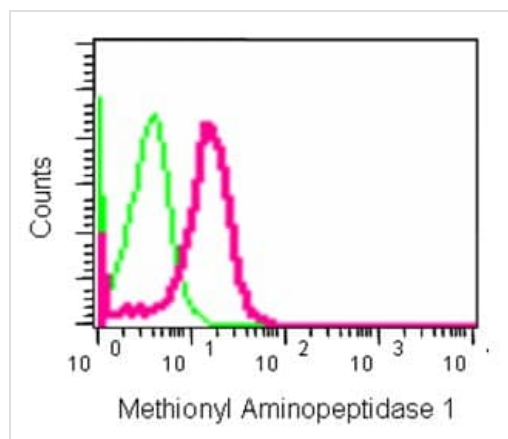
The Abpromise guarantee Our **Abpromise guarantee** covers the use of ab185540 in the following tested applications. The application notes include recommended starting dilutions; optimal dilutions/concentrations should be determined by the end user.

Application	Abreviews	Notes
Flow Cyt (Intra)		1/180. ab172730 - Rabbit monoclonal IgG, is suitable for use as an isotype control with this antibody.
WB		1/1000. Detects a band of approximately 43 kDa (predicted molecular weight: 43 kDa).
IHC-P		1/100. Perform heat mediated antigen retrieval with Tris/EDTA buffer pH 9.0 before commencing with IHC staining protocol.
ICC/IF		1/250.

Target

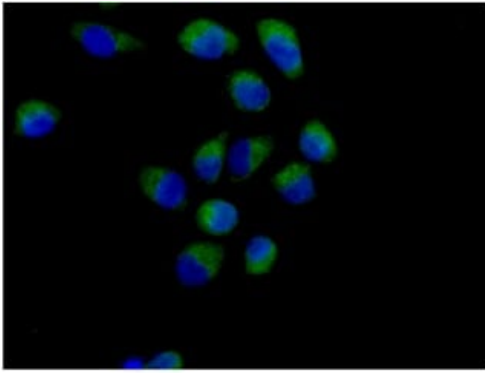
Function	Removes the amino-terminal methionine from nascent proteins. Required for normal progression through the cell cycle.
Sequence similarities	Belongs to the peptidase M24A family.

Images



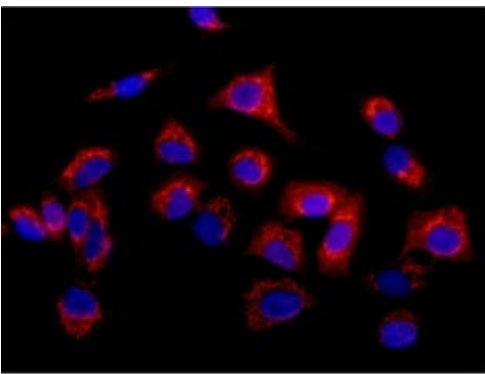
Intracellular Flow Cytometry analysis of 2% paraformaldehyde fixed A375 cells labeling Methionyl Aminopeptidase 1/MAP 1 with ab185540 at 1/180 dilution (pink) or a rabbit IgG isotype control (green), followed by secondary Goat anti rabbit IgG (FITC) at 1/150 dilution.

Flow Cytometry (Intracellular) - Anti-Methionyl Aminopeptidase 1/MAP 1 antibody [EPR15452(B)] (ab185540)



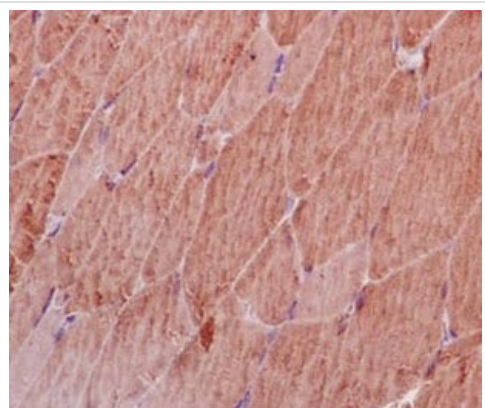
Immunocytochemistry/ Immunofluorescence - Anti-Methionyl Aminopeptidase 1/MAP 1 antibody [EPR15452(B)] (ab185540)

Immunofluorescent analysis of 4% paraformaldehyde fixed A375 cells labeling Methionyl Aminopeptidase 1/MAP 1 with ab185540 at 1/250 dilution. Secondary antibody Goat anti rabbit IgG (Alexa Fluor®488) at a 1/200 dilution. Counterstained with Dapi blue.



Immunocytochemistry/ Immunofluorescence - Anti-Methionyl Aminopeptidase 1/MAP 1 antibody [EPR15452(B)] (ab185540)

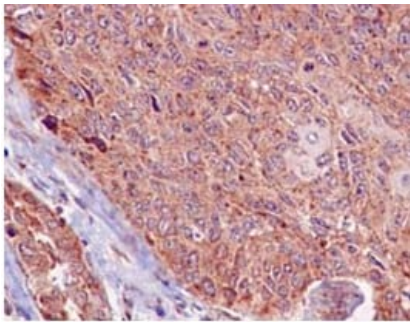
Immunofluorescent analysis of 4% paraformaldehyde fixed A549 cells labeling Methionyl Aminopeptidase 1/MAP 1 with ab185540 at 1/250 dilution. Secondary antibody Goat anti rabbit IgG (Alexa Fluor®555) at a 1/200 dilution. Counterstained with Dapi blue.



Immunohistochemistry (Formalin/PFA-fixed paraffin-embedded sections) - Anti-Methionyl Aminopeptidase 1/MAP 1 antibody [EPR15452(B)] (ab185540)

Immunohistochemical analysis of paraffin-embedded Rat skeletal muscle tissue labeling Methionyl Aminopeptidase 1/MAP 1 with ab185540 at 1/100 dilution. Counter stain Hematoxylin.

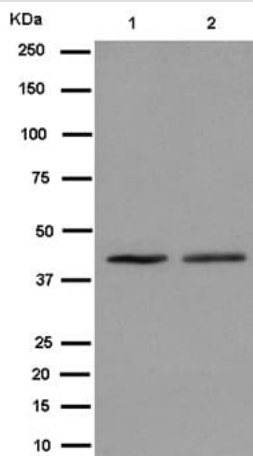
Perform heat mediated antigen retrieval with EDTA buffer pH 9 before commencing with IHC staining protocol.



Immunohistochemistry (Formalin/PFA-fixed paraffin-embedded sections) - Anti-Methionyl Aminopeptidase 1/MAP 1 antibody [EPR15452(B)] (ab185540)

Immunohistochemical analysis of paraffin-embedded Human cervix carcinoma tissue labeling Methionyl Aminopeptidase 1/MAP 1 with ab185540 at 1/100 dilution. Counter stain Hematoxylin.

Perform heat mediated antigen retrieval with EDTA buffer pH 9 before commencing with IHC staining protocol.



Western blot - Anti-Methionyl Aminopeptidase 1/MAP 1 antibody [EPR15452(B)] (ab185540)

All lanes : Anti-Methionyl Aminopeptidase 1/MAP 1 antibody [EPR15452(B)] (ab185540) at 1/1000 dilution

Lane 1 : A375 cell lysate

Lane 2 : HUVEC cell lysate

Lysates/proteins at 10 µg per lane.

Secondary

All lanes : Goat Anti-Rabbit IgG, (H+L), Peroxidase conjugated at 1/1000 dilution

Predicted band size: 43 kDa

Observed band size: 43 kDa

Why choose a recombinant antibody?



Research with confidence
Consistent and reproducible results



Long-term and scalable supply
Recombinant technology



Success from the first experiment
Confirmed specificity



Ethical standards compliant
Animal-free production

Anti-Methionyl Aminopeptidase 1/MAP 1 antibody
[EPR15452(B)] (ab185540)

Please note: All products are "FOR RESEARCH USE ONLY. NOT FOR USE IN DIAGNOSTIC PROCEDURES"

Our Abpromise to you: Quality guaranteed and expert technical support

- Replacement or refund for products not performing as stated on the datasheet
- Valid for 12 months from date of delivery
- Response to your inquiry within 24 hours
- We provide support in Chinese, English, French, German, Japanese and Spanish
- Extensive multi-media technical resources to help you
- We investigate all quality concerns to ensure our products perform to the highest standards

If the product does not perform as described on this datasheet, we will offer a refund or replacement. For full details of the Abpromise, please visit <https://www.abcam.com/abpromise> or contact our technical team.

Terms and conditions

- Guarantee only valid for products bought direct from Abcam or one of our authorized distributors