


Product datasheet

Anti-MFF antibody [EPR7360] ab129075

Recombinant RabMAb

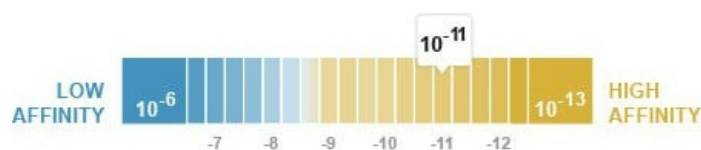
[1 Abreviews](#) [10 References](#) [3 Images](#)

Overview

Product name	Anti-MFF antibody [EPR7360]
Description	Rabbit monoclonal [EPR7360] to MFF
Host species	Rabbit
Tested applications	Suitable for: WB Unsuitable for: IHC-P or IP
Species reactivity	Reacts with: Human Predicted to work with: Mouse, Rat 
Immunogen	Synthetic peptide within Human MFF aa 250-350. The exact sequence is proprietary.
Positive control	Fetal muscle and fetal heart lysates
General notes	This product is a recombinant monoclonal antibody, which offers several advantages including: <ul style="list-style-type: none"> - High batch-to-batch consistency and reproducibility - Improved sensitivity and specificity - Long-term security of supply - Animal-free production For more information see here . Our RabMAb [®] technology is a patented hybridoma-based technology for making rabbit monoclonal antibodies. For details on our patents, please refer to RabMAb[®] patents .

Properties

Form	Liquid
Storage instructions	Shipped at 4°C. Store at -20°C. Stable for 12 months at -20°C.
Dissociation constant (K _D)	K _D = 6.10 x 10 ⁻¹¹ M



[Learn more about K_D](#)

Storage buffer	pH: 7.20
----------------	----------

	Preservative: 0.01% Sodium azide
	Constituents: 9% PBS, 40% Glycerol (glycerin, glycerine), 0.05% BSA, 50% Tissue culture supernatant
Purity	Protein A purified
Clonality	Monoclonal
Clone number	EPR7360
Isotype	IgG

Applications

The Abpromise guarantee Our **Abpromise guarantee** covers the use of ab129075 in the following tested applications. The application notes include recommended starting dilutions; optimal dilutions/concentrations should be determined by the end user.

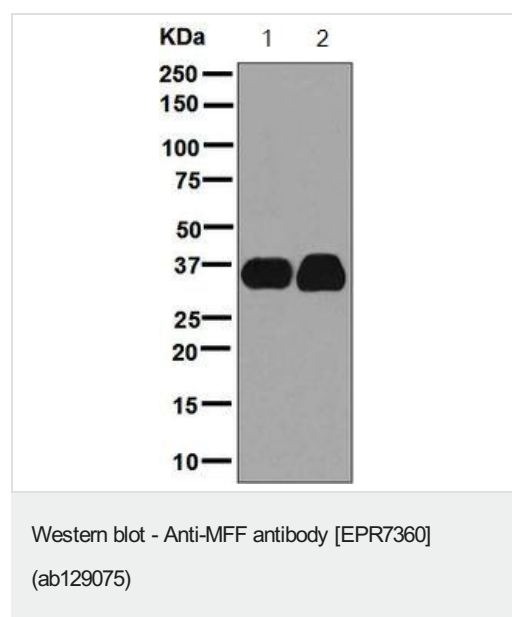
Application	Abreviews	Notes
WB		1/1000 - 1/10000. Detects a band of approximately 34 kDa (predicted molecular weight: 38 kDa).

Application notes Is unsuitable for IHC-P or IP.

Target

Function	Plays a role in mitochondrial and peroxisomal fission.
Tissue specificity	Highly expressed in heart, kidney, liver, brain, muscle, and stomach.
Sequence similarities	Belongs to the tango11 family.
Cellular localization	Mitochondrion outer membrane.

Images



All lanes : Anti-MFF antibody [EPR7360] (ab129075) at 1/1000 dilution

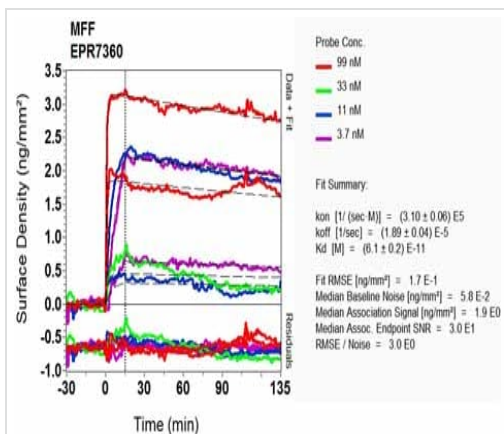
Lane 1 : Fetal muscle lysates

Lane 2 : Fetal heart lysates

Lysates/proteins at 10 µg per lane.

Predicted band size: 38 kDa

Observed band size: 34 kDa



OL-RD Scanning - Anti-MFF antibody [EPR7360]
(ab129075)

Equilibrium dissociation constant (K_D)

Learn more about K_D

[Click here to learn more about \$K_D\$](#)

Why choose a
recombinant antibody?



**Research with
confidence**
Consistent and
reproducible results



**Long-term and
scalable supply**
Recombinant
technology



**Success from the
first experiment**
Confirmed
specificity



**Ethical standards
compliant**
Animal-free
production

Anti-MFF antibody [EPR7360] (ab129075)

Please note: All products are "FOR RESEARCH USE ONLY. NOT FOR USE IN DIAGNOSTIC PROCEDURES"

Our Abpromise to you: Quality guaranteed and expert technical support

- Replacement or refund for products not performing as stated on the datasheet
- Valid for 12 months from date of delivery
- Response to your inquiry within 24 hours
- We provide support in Chinese, English, French, German, Japanese and Spanish
- Extensive multi-media technical resources to help you
- We investigate all quality concerns to ensure our products perform to the highest standards

If the product does not perform as described on this datasheet, we will offer a refund or replacement. For full details of the Abpromise, please visit <https://www.abcam.com/abpromise> or contact our technical team.

Terms and conditions

- Guarantee only valid for products bought direct from Abcam or one of our authorized distributors