


Product datasheet

Anti-MFI2/MTf antibody - N-terminal ab188817

[2 Images](#)

Overview

Product name	Anti-MFI2/MTf antibody - N-terminal
Description	Rabbit polyclonal to MFI2/MTf - N-terminal
Host species	Rabbit
Specificity	BLAST analysis of the peptide immunogen showed no homology with other Human proteins.
Tested applications	Suitable for: IHC-P
Species reactivity	Reacts with: Human Predicted to work with: Mouse, Rat, Rabbit, Horse, Cow, Dog, Pig, Monkey, Gorilla, Common marmoset 
Immunogen	Synthetic peptide corresponding to Human MFI2/MTf (N terminal). The peptide corresponds to 15 amino acids. (NP_005920.2) Database link: P08582
Positive control	Human lung epithelium and Human breast tissue
General notes	<p>The Life Science industry has been in the grips of a reproducibility crisis for a number of years. Abcam is leading the way in addressing this with our range of recombinant monoclonal antibodies and knockout edited cell lines for gold-standard validation. Please check that this product meets your needs before purchasing.</p> <p>If you have any questions, special requirements or concerns, please send us an inquiry and/or contact our Support team ahead of purchase. Recommended alternatives for this product can be found below, along with publications, customer reviews and Q&As</p>

Properties

Form	Liquid
Storage instructions	Shipped at 4°C. Store at +4°C short term (1-2 weeks). Upon delivery aliquot. Store at -20°C long term. Avoid freeze / thaw cycle.
Storage buffer	pH: 7.4 Preservative: 0.1% Sodium azide Constituent: 99% PBS
Purity	Immunogen affinity purified
Clonality	Polyclonal

Isotype IgG

Applications

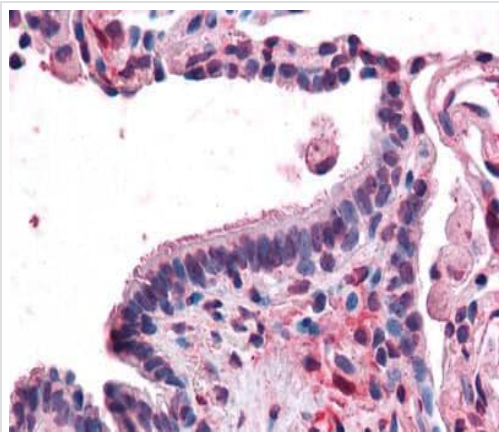
The Abpromise guarantee Our **Abpromise guarantee** covers the use of ab188817 in the following tested applications. The application notes include recommended starting dilutions; optimal dilutions/concentrations should be determined by the end user.

Application	Abreviews	Notes
IHC-P		Use a concentration of 15 - 20 µg/ml. Perform heat mediated antigen retrieval before commencing with IHC staining protocol.

Target

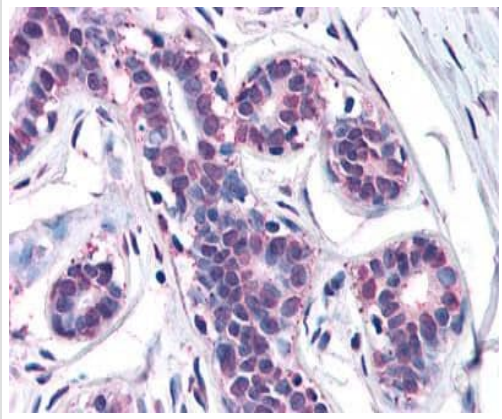
Function	Involved in iron cellular uptake. Seems to be internalized and then recycled back to the cell membrane. Binds a single atom of iron per subunit. Could also bind zinc.
Tissue specificity	Found predominantly in human melanomas and in certain fetal tissues; also found in liver, epithelium, umbilical chord, placenta and sweat gland ducts.
Sequence similarities	Belongs to the transferrin family. Contains 2 transferrin-like domains.
Cellular localization	Cell membrane.

Images



Immunohistochemical analysis of formalin-fixed, paraffin-embedded Human lung epithelium labeling MF12/MTf with ab188817 at 20 µg/ml

Immunohistochemistry (Formalin/PFA-fixed paraffin-embedded sections) - Anti-MF12/MTf antibody - N-terminal (ab188817)



Immunohistochemical analysis of formalin-fixed, paraffin-embedded Human breast labeling MF12/MTf with ab188817 at 20 µg/ml

Immunohistochemistry (Formalin/PFA-fixed paraffin-embedded sections) - Anti-MF12/MTf antibody - N-terminal (ab188817)

Please note: All products are "FOR RESEARCH USE ONLY. NOT FOR USE IN DIAGNOSTIC PROCEDURES"

Our Abpromise to you: Quality guaranteed and expert technical support

- Replacement or refund for products not performing as stated on the datasheet
- Valid for 12 months from date of delivery
- Response to your inquiry within 24 hours

- We provide support in Chinese, English, French, German, Japanese and Spanish
- Extensive multi-media technical resources to help you
- We investigate all quality concerns to ensure our products perform to the highest standards

If the product does not perform as described on this datasheet, we will offer a refund or replacement. For full details of the Abpromise, please visit <https://www.abcam.com/abpromise> or contact our technical team.

Terms and conditions

- Guarantee only valid for products bought direct from Abcam or one of our authorized distributors