

## Product datasheet

# Anti-mGluR1 antibody ab153669

[5 Images](#)

### Overview

---

<b>Product name</b>	Anti-mGluR1 antibody
<b>Description</b>	Chicken polyclonal to mGluR1
<b>Host species</b>	Chicken
<b>Tested applications</b>	<b>Suitable for:</b> IHC-FoFr
<b>Species reactivity</b>	<b>Reacts with:</b> Mouse
<b>Immunogen</b>	Synthetic peptide corresponding to Human mGluR1 conjugated to keyhole limpet haemocyanin. Mouse mGluR1 (NP_058672.1). Database link: <a href="#">NP_000829.2</a>
<b>General notes</b>	<p>Do not freeze this antibody unless you want to store it for a long period of time.</p> <p>The Life Science industry has been in the grips of a reproducibility crisis for a number of years. Abcam is leading the way in addressing this with our range of recombinant monoclonal antibodies and knockout edited cell lines for gold-standard validation. Please check that this product meets your needs before purchasing.</p> <p>If you have any questions, special requirements or concerns, please send us an inquiry and/or contact our Support team ahead of purchase. Recommended alternatives for this product can be found below, along with publications, customer reviews and Q&amp;As</p>

### Properties

---

<b>Form</b>	Liquid
<b>Storage instructions</b>	Shipped at 4°C. Store at +4°C. Store In the Dark.
<b>Storage buffer</b>	pH: 7 Preservative: 0.02% Sodium azide Constituent: 99% PBS
<b>Purity</b>	Immunogen affinity purified
<b>Clonality</b>	Polyclonal
<b>Isotype</b>	IgY

### Applications

---

## The Abpromise guarantee

Our **Abpromise guarantee** covers the use of ab153669 in the following tested applications.

The application notes include recommended starting dilutions; optimal dilutions/concentrations should be determined by the end user.

Application	Abreviews	Notes
IHC-FoFr		1/1000 - 1/2000. Use 2% paraformaldehyde-fixed tissues.

## Target

### Function

Receptor for glutamate. The activity of this receptor is mediated by a G-protein that activates a phosphatidylinositol-calcium second messenger system. May participate in the central action of glutamate in the CNS, such as long-term potentiation in the hippocampus and long-term depression in the cerebellum.

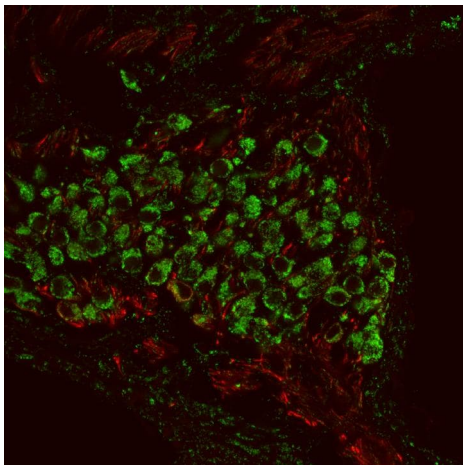
### Sequence similarities

Belongs to the G-protein coupled receptor 3 family.

### Cellular localization

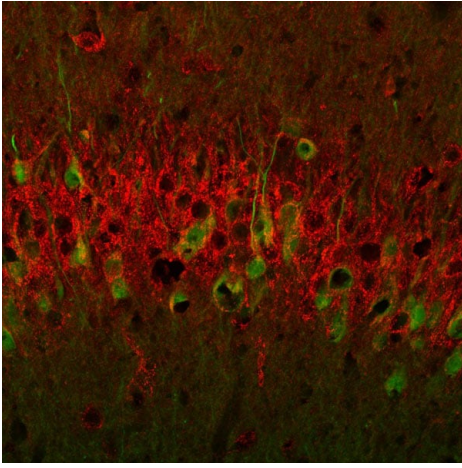
Cell membrane.

## Images



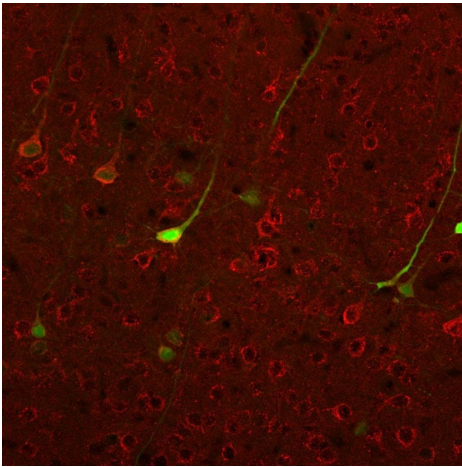
Immunohistochemistry (PFA perfusion fixed frozen sections) of e18 mouse cochlear ganglion using ab153669 at a dilution of 1/1000 (Green). anti-Neurofilament antibody (1/500) was used as a counterstain (Red).

Immunohistochemistry (PFA perfusion fixed frozen sections) - Anti-mGluR1 antibody (ab153669)



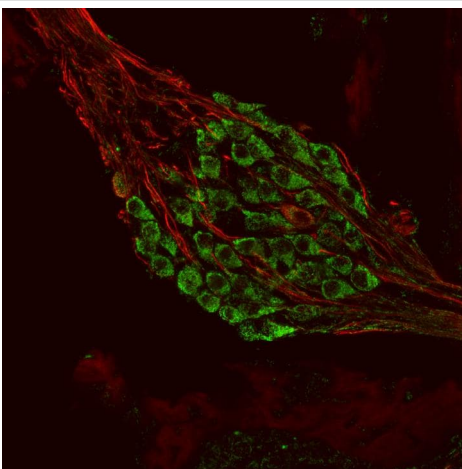
Immunohistochemistry (PFA perfusion fixed frozen sections) - Anti-mGluR1 antibody (ab153669)

Immunohistochemistry (PFA perfusion fixed frozen sections) analysis of adult mouse parietal cortex labelling mGluR1 (red) with ab153669. Tissue was fixed with 7.5% formalin. Green - rabbit anti-GFP-expressing cells.



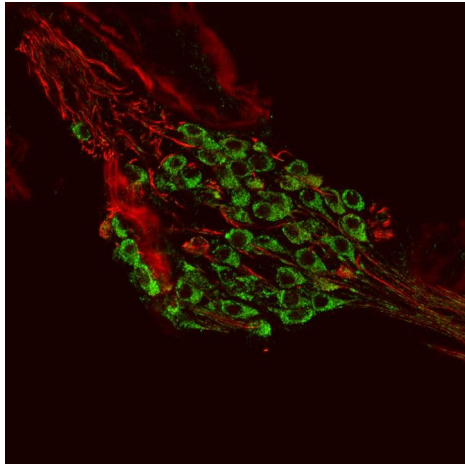
Immunohistochemistry (PFA perfusion fixed frozen sections) - Anti-mGluR1 antibody (ab153669)

Immunohistochemistry (PFA perfusion fixed frozen sections) analysis of adult mouse parietal cortex labelling mGluR1 (red) with ab153669. Tissue was fixed with 7.5% formalin. Green - rabbit anti-GFP-expressing cells.



Immunohistochemistry (PFA perfusion fixed frozen sections) - Anti-mGluR1 antibody (ab153669)

Immunohistochemistry (PFA perfusion fixed frozen sections) of e18 mouse cochlear ganglion using ab153669 at a dilution of 1/1000 (Green). anti-Neurofilament antibody (1/500) was used as a counterstain (Red).



Immunohistochemistry (PFA perfusion fixed frozen sections) of e18 mouse cochlear ganglion using ab153669 at a dilution of 1/1000 (Green). anti-Neurofilament antibody (1/500) was used as a counterstain (Red).

Immunohistochemistry (PFA perfusion fixed frozen sections) - Anti-mGluR1 antibody (ab153669)

**Please note:** All products are "FOR RESEARCH USE ONLY. NOT FOR USE IN DIAGNOSTIC PROCEDURES"

### Our Abpromise to you: Quality guaranteed and expert technical support

---

- Replacement or refund for products not performing as stated on the datasheet
- Valid for 12 months from date of delivery
- Response to your inquiry within 24 hours
- We provide support in Chinese, English, French, German, Japanese and Spanish
- Extensive multi-media technical resources to help you
- We investigate all quality concerns to ensure our products perform to the highest standards

If the product does not perform as described on this datasheet, we will offer a refund or replacement. For full details of the Abpromise, please visit <https://www.abcam.com/abpromise> or contact our technical team.

### Terms and conditions

---

- Guarantee only valid for products bought direct from Abcam or one of our authorized distributors