



## Product datasheet

### Anti-mGluR1 antibody ab82211

★★★★★ [14 Abreviews](#) [16 References](#) [2 Images](#)

#### Overview

<b>Product name</b>	Anti-mGluR1 antibody
<b>Description</b>	Rabbit polyclonal to mGluR1
<b>Host species</b>	Rabbit
<b>Tested applications</b>	<b>Suitable for:</b> WB, ICC/IF
<b>Species reactivity</b>	<b>Reacts with:</b> Rat, Human
<b>Immunogen</b>	Synthetic peptide corresponding to Human mGluR1 aa 1159-1171. Sequence: SSVPSSPVSESVL  Database link: <a href="#">Q13255</a> <div>  <a href="#">Run BLAST with</a>  <a href="#">Run BLAST with</a> </div>
<b>Positive control</b>	WB: Human brain lysate. ICC/IF: Rat brain (cingulate cortex).
<b>General notes</b>	<p>The Life Science industry has been in the grips of a reproducibility crisis for a number of years. Abcam is leading the way in addressing this with our range of recombinant monoclonal antibodies and knockout edited cell lines for gold-standard validation. Please check that this product meets your needs before purchasing.</p> <p>If you have any questions, special requirements or concerns, please send us an inquiry and/or contact our Support team ahead of purchase. Recommended alternatives for this product can be found below, along with publications, customer reviews and Q&amp;As</p>

#### Properties

<b>Form</b>	Liquid
<b>Storage instructions</b>	Shipped at 4°C. Upon delivery aliquot and store at -20°C. Avoid freeze / thaw cycles.
<b>Storage buffer</b>	Preservative: 0.02% Sodium azide Constituent: PBS
<b>Purity</b>	Immunogen affinity purified
<b>Clonality</b>	Polyclonal
<b>Isotype</b>	IgG

## Applications

### The Abpromise guarantee

Our **Abpromise guarantee** covers the use of ab82211 in the following tested applications.

The application notes include recommended starting dilutions; optimal dilutions/concentrations should be determined by the end user.

Application	Abreviews	Notes
WB		1/500 - 1/1000. Detects a band of approximately 110 kDa (predicted molecular weight: 133 kDa).
ICC/IF		1/100 - 1/500.

## Target

### Function

Receptor for glutamate. The activity of this receptor is mediated by a G-protein that activates a phosphatidylinositol-calcium second messenger system. May participate in the central action of glutamate in the CNS, such as long-term potentiation in the hippocampus and long-term depression in the cerebellum.

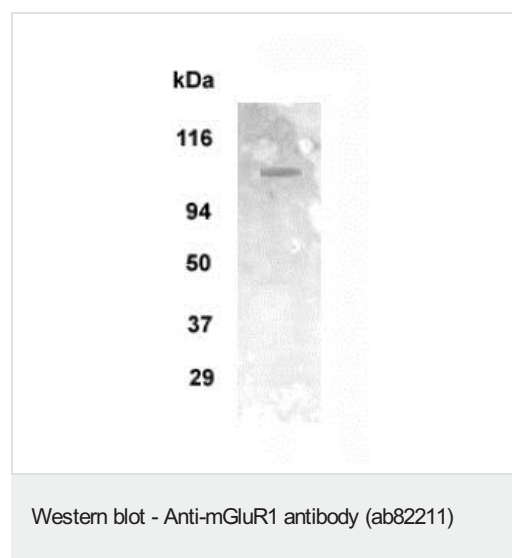
### Sequence similarities

Belongs to the G-protein coupled receptor 3 family.

### Cellular localization

Cell membrane.

## Images



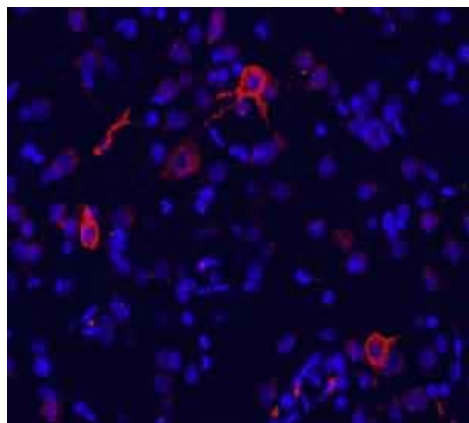
Anti-mGluR1 antibody (ab82211) at 1/1000 dilution + human brain lysate at 20 µg

### Secondary

AP-conjugated secondary at 1/5000 dilution

**Predicted band size:** 133 kDa

**Observed band size:** 110 kDa



Immunocytochemistry/ Immunofluorescence - Anti-mGluR1 antibody (ab82211)

Immunofluorescence labeling of mGluR1 in rat brain (cingulate cortex). Using ab82211 (red color). DAPI was used to counter-stain cell nuclei (blue color). Working dilution is 1/100-1/500.

**Please note:** All products are "FOR RESEARCH USE ONLY. NOT FOR USE IN DIAGNOSTIC PROCEDURES"

### Our Abpromise to you: Quality guaranteed and expert technical support

---

- Replacement or refund for products not performing as stated on the datasheet
- Valid for 12 months from date of delivery
- Response to your inquiry within 24 hours
- We provide support in Chinese, English, French, German, Japanese and Spanish
- Extensive multi-media technical resources to help you
- We investigate all quality concerns to ensure our products perform to the highest standards

If the product does not perform as described on this datasheet, we will offer a refund or replacement. For full details of the Abpromise, please visit <https://www.abcam.com/abpromise> or contact our technical team.

### Terms and conditions

---

- Guarantee only valid for products bought direct from Abcam or one of our authorized distributors