




Product datasheet

Anti-mH2A2 antibody [CL5263] ab242357

5 Images

Overview

Product name	Anti-mH2A2 antibody [CL5263]
Description	Mouse monoclonal [CL5263] to mH2A2
Host species	Mouse
Tested applications	Suitable for: ICC/IF, IHC-P
Species reactivity	Reacts with: Human Predicted to work with: Mouse 
Immunogen	Synthetic peptide within Human mH2A2 aa 100-200. The exact immunogen sequence used to generate this antibody is proprietary information. If additional detail on the immunogen is needed to determine the suitability of the antibody for your needs, please contact our Scientific Support team to discuss your requirements. Database link: Q9P0M6 <div>  Run BLAST with  Run BLAST with </div>
Positive control	IHC-P: Human testis, fallopian tube, cerebral cortex and kidney tissue. ICC/IF: PC-3 cells
General notes	<p>The Life Science industry has been in the grips of a reproducibility crisis for a number of years. Abcam is leading the way in addressing this with our range of recombinant monoclonal antibodies and knockout edited cell lines for gold-standard validation. Please check that this product meets your needs before purchasing.</p> <p>If you have any questions, special requirements or concerns, please send us an inquiry and/or contact our Support team ahead of purchase. Recommended alternatives for this product can be found below, along with publications, customer reviews and Q&As</p>

Properties

Form	Liquid
Storage instructions	Shipped at 4°C. Store at +4°C short term (1-2 weeks). Upon delivery aliquot. Store at -20°C long term. Avoid freeze / thaw cycle.
Storage buffer	pH: 7.20 Preservative: 0.02% Sodium azide Constituents: 40% Glycerol (glycerin, glycerine), PBS
Purity	Protein A purified
Clonality	Monoclonal

Clone number	CL5263
Isotype	IgG1

Applications

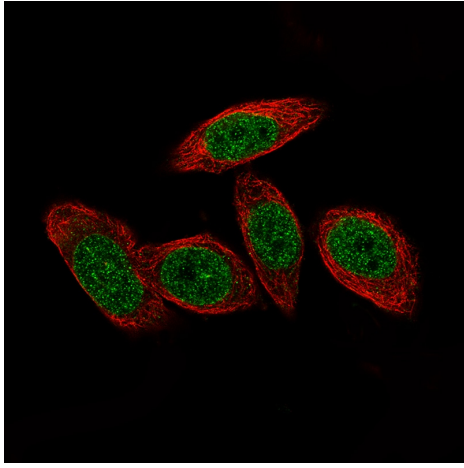
The Abpromise guarantee Our **Abpromise guarantee** covers the use of ab242357 in the following tested applications. The application notes include recommended starting dilutions; optimal dilutions/concentrations should be determined by the end user.

Application	Abreviews	Notes
ICC/IF		Use a concentration of 2 - 10 µg/ml.
IHC-P		1/200 - 1/500. Perform heat mediated antigen retrieval with citrate buffer pH 6 before commencing with IHC staining protocol.

Target

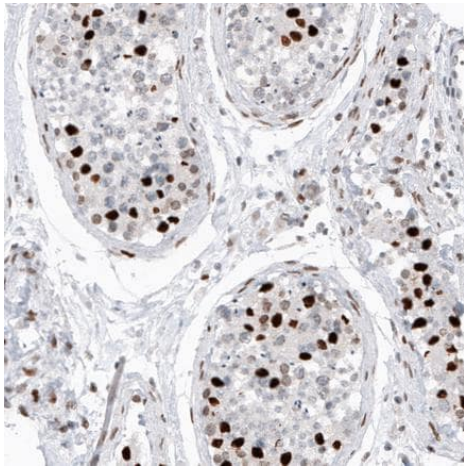
Function	Variant histone H2A which replaces conventional H2A in a subset of nucleosomes where it represses transcription. Nucleosomes wrap and compact DNA into chromatin, limiting DNA accessibility to the cellular machineries which require DNA as a template. Histones thereby play a central role in transcription regulation, DNA repair, DNA replication and chromosomal stability. DNA accessibility is regulated via a complex set of post-translational modifications of histones, also called histone code, and nucleosome remodeling. May be involved in stable X chromosome inactivation.
Sequence similarities	Contains 1 histone H2A domain. Contains 1 Macro domain.
Cellular localization	Nucleus. Chromosome. Enriched in inactive X chromosome chromatin and in senescence-associated heterochromatin.

Images



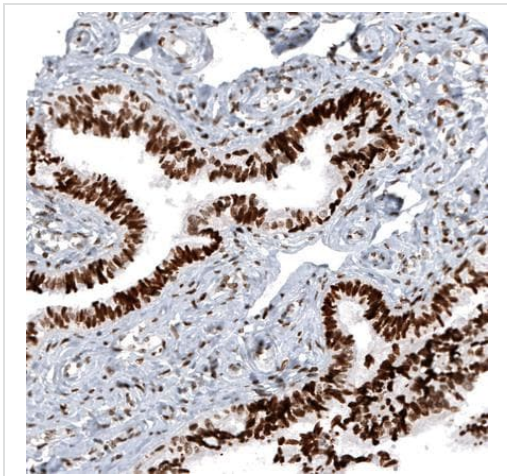
Immunocytochemistry/ Immunofluorescence - Anti-mH2A2 antibody [CL5263] (ab242357)

Immunocytochemistry/ Immunofluorescence analysis of PC-3 cells labeling mH2A2 with ab242357 at 2-10 $\mu\text{g/mL}$. Cells were fixed with PFA and permeabilised with Triton X-100. The data is showing specific staining in the nucleoplasm and nuclear membrane in green. Microtubule- and nuclear probes are visualized in red and blue, respectively (where available).



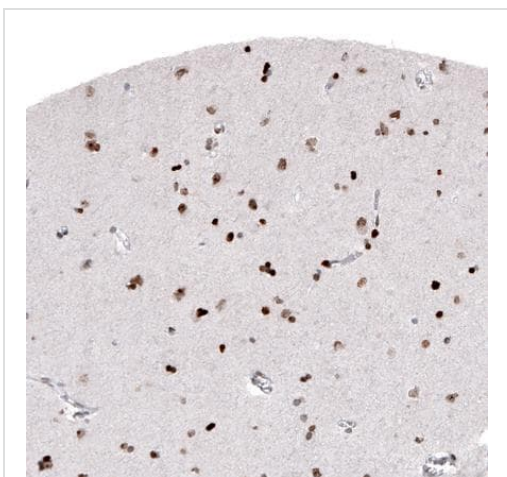
Immunohistochemistry (Formalin/PFA-fixed paraffin-embedded sections) - Anti-mH2A2 antibody [CL5263] (ab242357)

Paraffin-embedded human testis tissue stained for mH2A2 with ab242357 at 1/200 dilution in immunohistochemical analysis.



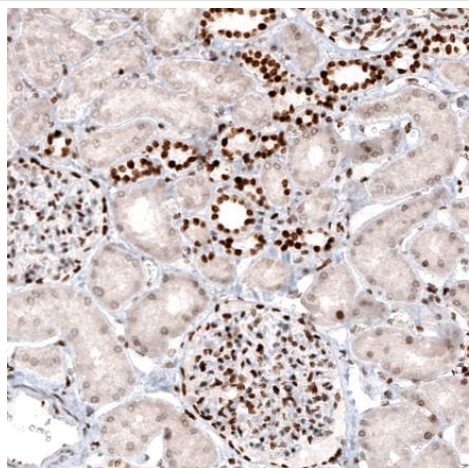
Paraffin-embedded human fallopian tube tissue stained for mH2A2 with ab242357 at 1/200 dilution in immunohistochemical analysis.

Immunohistochemistry (Formalin/PFA-fixed paraffin-embedded sections) - Anti-mH2A2 antibody
[CL5263] (ab242357)



Paraffin-embedded human cerebral cortex tissue stained for mH2A2 with ab242357 at 1/200 dilution in immunohistochemical analysis.

Immunohistochemistry (Formalin/PFA-fixed paraffin-embedded sections) - Anti-mH2A2 antibody
[CL5263] (ab242357)



Paraffin-embedded human kidney tissue stained for mH2A2 with ab242357 at 1/200 dilution in immunohistochemical analysis.

Immunohistochemistry (Formalin/PFA-fixed paraffin-embedded sections) - Anti-mH2A2 antibody [CL5263] (ab242357)

Please note: All products are "FOR RESEARCH USE ONLY. NOT FOR USE IN DIAGNOSTIC PROCEDURES"

Our Abpromise to you: Quality guaranteed and expert technical support

- Replacement or refund for products not performing as stated on the datasheet
- Valid for 12 months from date of delivery
- Response to your inquiry within 24 hours
- We provide support in Chinese, English, French, German, Japanese and Spanish
- Extensive multi-media technical resources to help you
- We investigate all quality concerns to ensure our products perform to the highest standards

If the product does not perform as described on this datasheet, we will offer a refund or replacement. For full details of the Abpromise, please visit <https://www.abcam.com/abpromise> or contact our technical team.

Terms and conditions

- Guarantee only valid for products bought direct from Abcam or one of our authorized distributors