

Product datasheet

Anti-MICB antibody ab167488

[1 Image](#)

Overview

Product name	Anti-MICB antibody
Description	Mouse polyclonal to MICB
Host species	Mouse
Tested applications	Suitable for: WB
Species reactivity	Reacts with: Human
Immunogen	Recombinant full length protein within Human MICB aa 1-350. The exact immunogen sequence used to generate this antibody is proprietary information. If additional detail on the immunogen is needed to determine the suitability of the antibody for your needs, please contact our Scientific Support team to discuss your requirements. Run BLAST with Run BLAST with
Positive control	MICB transfected 293T cell lysate.
General notes	<p>The Life Science industry has been in the grips of a reproducibility crisis for a number of years. Abcam is leading the way in addressing this with our range of recombinant monoclonal antibodies and knockout edited cell lines for gold-standard validation. Please check that this product meets your needs before purchasing.</p> <p>If you have any questions, special requirements or concerns, please send us an inquiry and/or contact our Support team ahead of purchase. Recommended alternatives for this product can be found below, along with publications, customer reviews and Q&As</p>

Properties

Form	Liquid
Storage instructions	Shipped at 4°C. Upon delivery aliquot. Store at -20°C or -80°C. Avoid freeze / thaw cycle.
Storage buffer	pH: 7.4 Constituent: 99% PBS
Purity	Protein A purified
Clonality	Polyclonal
Isotype	IgG

Applications

The Abpromise guarantee

Our **Abpromise guarantee** covers the use of ab167488 in the following tested applications.

The application notes include recommended starting dilutions; optimal dilutions/concentrations should be determined by the end user.

Application	Abreviews	Notes
WB		Use a concentration of 1 µg/ml. Predicted molecular weight: 43 kDa.

Target

Function

Seems to have no role in antigen presentation. Acts as a stress-induced self-antigen that is recognized by gamma delta T cells. Ligand for the KLRK1/NKG2D receptor. Binding to KLRK1 leads to cell lysis.

Tissue specificity

Widely expressed with the exception of the central nervous system where it is absent. Expressed in many, but not all, epithelial tumors of lung, breast, kidney, ovary, prostate and colon. In hepatocellular carcinomas, expressed in tumor cells but not in surrounding non-cancerous tissue.

Involvement in disease

Genetic variations in MICA are a cause of susceptibility to rheumatoid arthritis (RA) [MIM:180300]. It is a systemic inflammatory disease with autoimmune features and a complex genetic component. It primarily affects the joints and is characterized by inflammatory changes in the synovial membranes and articular structures, widespread fibrinoid degeneration of the collagen fibers in mesenchymal tissues, and by atrophy and rarefaction of bony structures.
Note=The MICB*004 allele is associated with rheumatoid arthritis.
Note=Genetic variation in MICB is associated with cytomegalovirus and herpes simplex virus I seropositivity and this may be associated with schizophrenia risk.

Sequence similarities

Belongs to the MHC class I family. MIC subfamily.
Contains 1 Ig-like C1-type (immunoglobulin-like) domain.

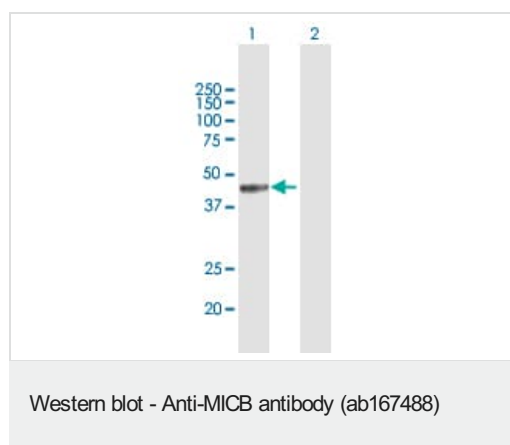
Post-translational modifications

Proteolytically cleaved and released from the cell surface of tumor cells.

Cellular localization

Cell membrane. Binding to human cytomegalovirus glycoprotein UL16 causes sequestration in the endoplasmic reticulum.

Images



All lanes : Anti-MICB antibody (ab167488) at 1 µg/ml

Lane 1 : MICB transfected 293T cell lysate

Lane 2 : Non-transfected 293T cell line lysate

Lysates/proteins at 15 µl per lane.

Developed using the ECL technique.

Predicted band size: 43 kDa

Please note: All products are "FOR RESEARCH USE ONLY. NOT FOR USE IN DIAGNOSTIC PROCEDURES"

Our Abpromise to you: Quality guaranteed and expert technical support

- Replacement or refund for products not performing as stated on the datasheet
- Valid for 12 months from date of delivery
- Response to your inquiry within 24 hours

- We provide support in Chinese, English, French, German, Japanese and Spanish
- Extensive multi-media technical resources to help you
- We investigate all quality concerns to ensure our products perform to the highest standards

If the product does not perform as described on this datasheet, we will offer a refund or replacement. For full details of the Abpromise, please visit <https://www.abcam.com/abpromise> or contact our technical team.

Terms and conditions

- Guarantee only valid for products bought direct from Abcam or one of our authorized distributors