

Product datasheet

Anti-MICU2 antibody ab101465

★★★★★ [3 Abreviews](#) [27 References](#) [4 Images](#)

Overview

Product name	Anti-MICU2 antibody
Description	Rabbit polyclonal to MICU2
Host species	Rabbit
Tested applications	Suitable for: WB, ICC/IF, IHC-P
Species reactivity	Reacts with: Mouse, Human
Immunogen	Recombinant fragment corresponding to Human MICU2 aa 95-238. (AAH31089)
Positive control	U87-MG whole cell lysate
General notes	<p>The Life Science industry has been in the grips of a reproducibility crisis for a number of years. Abcam is leading the way in addressing this with our range of recombinant monoclonal antibodies and knockout edited cell lines for gold-standard validation. Please check that this product meets your needs before purchasing.</p> <p>If you have any questions, special requirements or concerns, please send us an inquiry and/or contact our Support team ahead of purchase. Recommended alternatives for this product can be found below, along with publications, customer reviews and Q&As</p>

Properties

Form	Liquid
Storage instructions	Shipped at 4°C. Upon delivery aliquot. Store at -20°C or -80°C. Avoid freeze / thaw cycle.
Storage buffer	pH: 7.00 Preservative: 0.025% Proclin 300 Constituents: 79% PBS, 20% Glycerol (glycerin, glycerine)
Purity	Immunogen affinity purified
Clonality	Polyclonal
Isotype	IgG

Applications

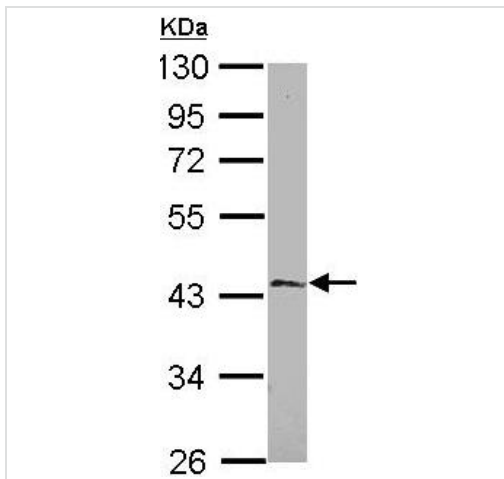
The Abpromise guarantee Our **Abpromise guarantee** covers the use of ab101465 in the following tested applications. The application notes include recommended starting dilutions; optimal dilutions/concentrations should be determined by the end user.

Application	Abreviews	Notes
WB	★★★★★ (3)	1/500 - 1/3000. Predicted molecular weight: 50 kDa.
ICC/IF		1/100 - 1/1000.
IHC-P		1/100 - 1/1000.

Target

Sequence similarities Contains 4 EF-hand domains.

Images

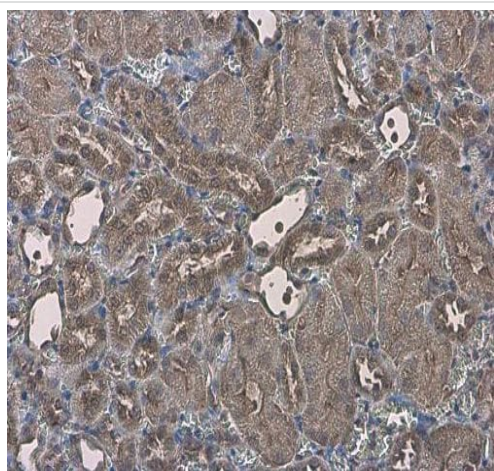


Western blot - Anti-MICU2 antibody (ab101465)

Anti-MICU2 antibody (ab101465) at 1/1000 dilution + U87-MG whole cell lysate at 30 μ g

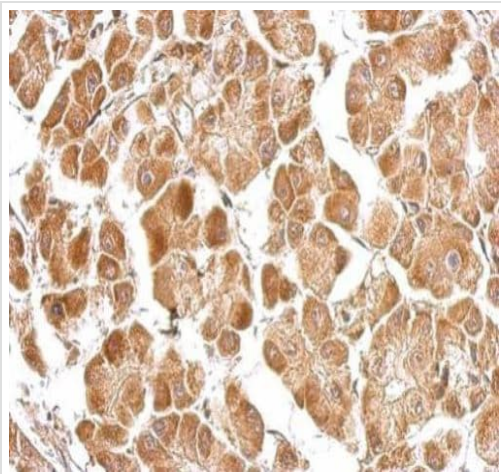
Predicted band size: 50 kDa

10% SDS-PAGE



Immunohistochemical analysis of FFPE mouse kidney tissue, labeling MICU2 with ab101465 (diluted 1/500).

Immunohistochemistry (Formalin/PFA-fixed paraffin-embedded sections) - Anti-MICU2 antibody (ab101465)



Immunohistochemical analysis of FFPE human hepatoma tissue, labeling MICU2 with ab101465 (diluted 1/500).

Immunohistochemistry (Formalin/PFA-fixed paraffin-embedded sections) - Anti-MICU2 antibody (ab101465)



Immunocytochemistry/ Immunofluorescence analysis of methanol-fixed MCF-7 cell line, labeling MICU2 with ab101465 (diluted 1/200). DNA stained with Hoechst 33342.

Immunocytochemistry/ Immunofluorescence - Anti-MICU2 antibody (ab101465)

Please note: All products are "FOR RESEARCH USE ONLY. NOT FOR USE IN DIAGNOSTIC PROCEDURES"

Our Abpromise to you: Quality guaranteed and expert technical support

- Replacement or refund for products not performing as stated on the datasheet
- Valid for 12 months from date of delivery
- Response to your inquiry within 24 hours
- We provide support in Chinese, English, French, German, Japanese and Spanish
- Extensive multi-media technical resources to help you
- We investigate all quality concerns to ensure our products perform to the highest standards

If the product does not perform as described on this datasheet, we will offer a refund or replacement. For full details of the Abpromise, please visit <https://www.abcam.com/abpromise> or contact our technical team.

Terms and conditions

- Guarantee only valid for products bought direct from Abcam or one of our authorized distributors