

Anti-Midkine antibody [EP1143Y] - BSA and Azide free ab236781

KO VALIDATED Recombinant RabMAb

6 Images

Overview

Product name	Anti-Midkine antibody [EP1143Y] - BSA and Azide free
Description	Rabbit monoclonal [EP1143Y] to Midkine - BSA and Azide free
Host species	Rabbit
Tested applications	Suitable for: Flow Cyt (Intra), WB, IP, ICC/IF, IHC-P
Species reactivity	Reacts with: Human, Recombinant fragment
Immunogen	Synthetic peptide. This information is proprietary to Abcam and/or its suppliers.
General notes	<p>ab236781 is the carrier-free version of ab52637.</p> <p>Our carrier-free antibodies are typically supplied in a PBS-only formulation, purified and free of BSA, sodium azide and glycerol. The carrier-free buffer and high concentration allow for increased conjugation efficiency.</p> <p>This conjugation-ready format is designed for use with fluorochromes, metal isotopes, oligonucleotides, and enzymes, which makes them ideal for antibody labelling, functional and cell-based assays, flow-based assays (e.g. mass cytometry) and Multiplex Imaging applications.</p> <p>Use our conjugation kits for antibody conjugates that are ready-to-use in as little as 20 minutes with <1 minute hands-on-time and 100% antibody recovery: available for fluorescent dyes, HRP, biotin and gold.</p> <p>This product is compatible with the Maxpar[®] Antibody Labeling Kit from Fluidigm, without the need for antibody preparation. Maxpar[®] is a trademark of Fluidigm Canada Inc.</p> <p>This product is a recombinant monoclonal antibody, which offers several advantages including:</p> <ul style="list-style-type: none">- High batch-to-batch consistency and reproducibility- Improved sensitivity and specificity- Long-term security of supply- Animal-free production <p>For more information see here.</p> <p>Our RabMAb[®] technology is a patented hybridoma-based technology for making rabbit monoclonal antibodies. For details on our patents, please refer to RabMAb[®] patents.</p> <p>Mouse, Rat: We have preliminary internal testing data to indicate this antibody may not react with these species. Please contact us for more information.</p>

Properties

Form	Liquid
Storage instructions	Shipped at 4°C. Store at +4°C. Do Not Freeze.
Storage buffer	pH: 7.2 Constituent: PBS
Carrier free	Yes
Purity	Protein A purified
Clonality	Monoclonal
Clone number	EP1143Y
Isotype	IgG

Applications

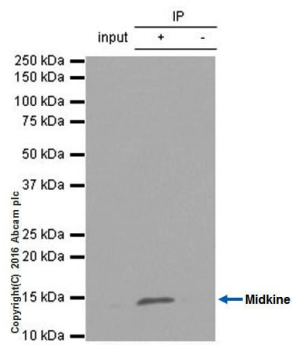
The Abpromise guarantee Our **Abpromise guarantee** covers the use of ab236781 in the following tested applications. The application notes include recommended starting dilutions; optimal dilutions/concentrations should be determined by the end user.

Application	Abreviews	Notes
Flow Cyt (Intra)		Use at an assay dependent concentration.
WB		Use at an assay dependent concentration. Detects a band of approximately 16 kDa (predicted molecular weight: 16 kDa).
IP		Use at an assay dependent concentration.
ICC/IF		Use at an assay dependent concentration.
IHC-P		Use at an assay dependent concentration. Perform heat mediated antigen retrieval with citrate buffer pH 6 before commencing with IHC staining protocol.

Target

Function	Has heparin binding activity, and growth promoting activity. Involved in neointima formation after arterial injury, possibly by mediating leukocyte recruitment. Also involved in early fetal adrenal gland development.
Sequence similarities	Belongs to the pleiotrophin family.
Cellular localization	Secreted.

Images



Immunoprecipitation - Anti-Midkine antibody [EP1143Y] - BSA and Azide free (ab236781)

ab52637 (purified) at 1:20 dilution (2ug) immunoprecipitating Midkine in SH-SY5Y (Human neuroblastoma cell line from bone marrow) whole cell lysate.

Lane 1 (input): SH-SY5Y (Human neuroblastoma cell line from bone marrow) whole cell lysate 10ug

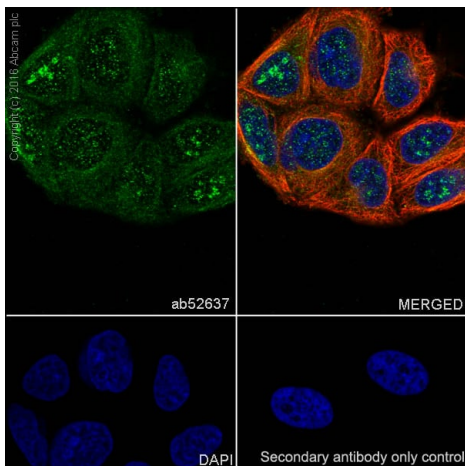
Lane 2 (+): **ab52637** & SH-SY5Y (Human neuroblastoma cell line from bone marrow) whole cell lysate

Lane 3 (-): Rabbit monoclonal IgG (**ab172730**) instead of **ab52637** in SH-SY5Y (Human neuroblastoma cell line from bone marrow) whole cell lysate

For western blotting, VeriBlot for IP Detection Reagent (HRP) (**ab131366**) was used for detection at 1:5000 dilution.

Blocking and diluting buffer: 5% NFDm/TBST.

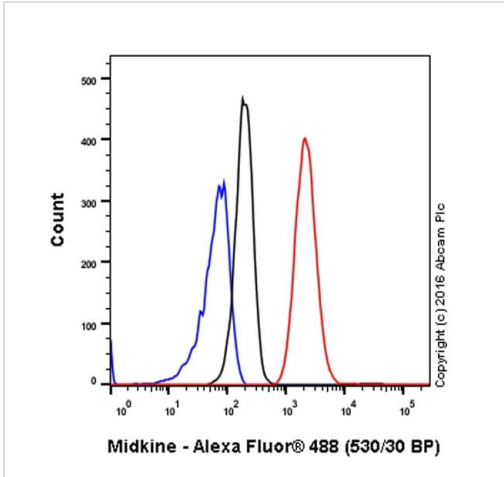
This data was developed using the same antibody clone in a different buffer formulation containing PBS, BSA, glycerol, and sodium azide (**ab52637**).



Immunocytochemistry/ Immunofluorescence - Anti-Midkine antibody [EP1143Y] - BSA and Azide free (ab236781)

Immunocytochemistry/ Immunofluorescence analysis of HeLa (Human epithelial cell line from cervix adenocarcinoma) cells labeling Midkine with purified **ab52637** at 1:100 dilution (10.5µg/ml). Cells were fixed in 4% Paraformaldehyde and permeabilized with 0.1% tritonX-100. Cells were counterstained with Ab195889 Anti-alpha Tubulin antibody [DM1A] - Microtubule Marker (Alexa Fluor® 594) 1:200 (2.5 µg/ml). **ab150077** Goat anti rabbit IgG(Alexa Fluor® 488) was used as the secondary antibody at 1:1000 dilution. DAPI nuclear counterstain. PBS instead of the primary antibody was used as the secondary antibody only control.

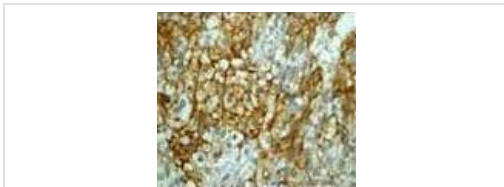
This data was developed using the same antibody clone in a different buffer formulation containing PBS, BSA, glycerol, and sodium azide (**ab52637**).



Flow Cytometry (Intracellular) - Anti-Midkine antibody [EP1143Y] - BSA and Azide free (ab236781)

Intracellular Flow Cytometry analysis of HeLa (human cervix adenocarcinoma) cells labeling Midkine with purified **ab52637** at 1/250 dilution (10ug/ml) (red). Cells were fixed with 4% paraformaldehyde and permeabilised with 90% methanol. A Goat anti rabbit IgG (Alexa Fluor® 488) (1/2000 dilution) was used as the secondary antibody. Rabbit monoclonal IgG (Black) was used as the isotype control, cells without incubation with primary antibody and secondary antibody (Blue) were used as the unlabeled control.

This data was developed using the same antibody clone in a different buffer formulation containing PBS, BSA, glycerol, and sodium azide (**ab52637**).

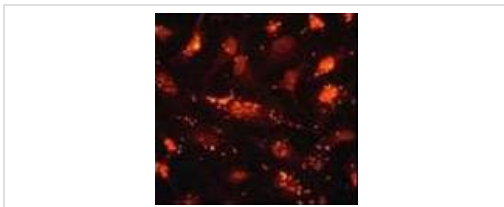


Immunohistochemistry (Formalin/PFA-fixed paraffin-embedded sections) - Anti-Midkine antibody [EP1143Y] - BSA and Azide free (ab236781)

Human liver carcinoma stained with unpurified **ab52637** at 1/100 - 1/250 dilution

This data was developed using the same antibody clone in a different buffer formulation containing PBS, BSA, glycerol, and sodium azide (**ab52637**).

Perform heat mediated antigen retrieval with citrate buffer pH 6 before commencing with IHC staining protocol.



Immunocytochemistry/ Immunofluorescence - Anti-Midkine antibody [EP1143Y] - BSA and Azide free (ab236781)

HeLa cells stained with unpurified **ab52637** at 1/250 - 1/500 dilution

This data was developed using the same antibody clone in a different buffer formulation containing PBS, BSA, glycerol, and sodium azide (**ab52637**).

Why choose a recombinant antibody?



Research with confidence
Consistent and reproducible results



Long-term and scalable supply
Recombinant technology



Success from the first experiment
Confirmed specificity



Ethical standards compliant
Animal-free production

Anti-Midkine antibody [EP1143Y] - BSA and Azide free (ab236781)

Please note: All products are "FOR RESEARCH USE ONLY. NOT FOR USE IN DIAGNOSTIC PROCEDURES"

Our Abpromise to you: Quality guaranteed and expert technical support

- Replacement or refund for products not performing as stated on the datasheet
- Valid for 12 months from date of delivery
- Response to your inquiry within 24 hours
- We provide support in Chinese, English, French, German, Japanese and Spanish
- Extensive multi-media technical resources to help you
- We investigate all quality concerns to ensure our products perform to the highest standards

If the product does not perform as described on this datasheet, we will offer a refund or replacement. For full details of the Abpromise, please visit <https://www.abcam.com/abpromise> or contact our technical team.

Terms and conditions

- Guarantee only valid for products bought direct from Abcam or one of our authorized distributors