

## Product datasheet

### Anti-MIF antibody ab7207

★★★★★ [11 Abreviews](#) [37 References](#) [2 Images](#)

#### Overview

<b>Product name</b>	Anti-MIF antibody
<b>Description</b>	Rabbit polyclonal to MIF
<b>Host species</b>	Rabbit
<b>Tested applications</b>	<b>Suitable for:</b> WB, IHC-Fr, ICC/IF, ELISA, IP, IHC-P
<b>Species reactivity</b>	<b>Reacts with:</b> Mouse, Rat
<b>Immunogen</b>	Recombinant full length protein corresponding to Rat MIF. Database link: <a href="#">P30904</a>
<b>General notes</b>	<p>The Life Science industry has been in the grips of a reproducibility crisis for a number of years. Abcam is leading the way in addressing this with our range of recombinant monoclonal antibodies and knockout edited cell lines for gold-standard validation. Please check that this product meets your needs before purchasing.</p> <p>If you have any questions, special requirements or concerns, please send us an inquiry and/or contact our Support team ahead of purchase. Recommended alternatives for this product can be found below, along with publications, customer reviews and Q&amp;As</p>

#### Properties

<b>Form</b>	Liquid
<b>Storage instructions</b>	Shipped at 4°C. Store at +4°C short term (1-2 weeks). Upon delivery aliquot. Store at -20°C or -80°C. Avoid freeze / thaw cycle.
<b>Storage buffer</b>	pH: 6.50 Preservative: 0.1% Sodium azide Constituent: PBS
<b>Purity</b>	Protein A purified
<b>Clonality</b>	Polyclonal
<b>Isotype</b>	IgG

#### Applications

**The Abpromise guarantee** Our **[Abpromise guarantee](#)** covers the use of ab7207 in the following tested applications.

The application notes include recommended starting dilutions; optimal dilutions/concentrations should be determined by the end user.

Application	Abreviews	Notes
WB	★★★★★ (4)	Use at an assay dependent concentration. Predicted molecular weight: 12 kDa.
IHC-Fr	★★★★★ (3)	Use at an assay dependent concentration.
ICC/IF	★★★★★ (1)	Use at an assay dependent concentration.
ELISA	★★★★★ (1)	Use at an assay dependent concentration. PubMed: 19066630
IP		Use at an assay dependent concentration.
IHC-P	★★★★★ (2)	Use at an assay dependent concentration.

## Target

### Function

Pro-inflammatory cytokine. Involved in the innate immune response to bacterial pathogens. The expression of MIF at sites of inflammation suggests a role as mediator in regulating the function of macrophages in host defense. Counteracts the anti-inflammatory activity of glucocorticoids. Has phenylpyruvate tautomerase and dopachrome tautomerase activity (in vitro), but the physiological substrate is not known. It is not clear whether the tautomerase activity has any physiological relevance, and whether it is important for cytokine activity.

### Involvement in disease

Genetic variations in MIF are associated with susceptibility to rheumatoid arthritis systemic juvenile (RASJ) [MIM:604302]. An inflammatory articular disorder with systemic-onset beginning before the age of 16. It represents a subgroup of juvenile arthritis associated with severe extraarticular features and occasionally fatal complications. During active phases of the disorder, patients display a typical daily spiking fever, an evanescent macular rash, lymphadenopathy, hepatosplenomegaly, serositis, myalgia and arthritis.

### Sequence similarities

Belongs to the MIF family.

### Cellular localization

Secreted. Cytoplasm. Does not have a cleavable signal sequence and is secreted via a specialized, non-classical pathway. Secreted by macrophages upon stimulation by bacterial lipopolysaccharide (LPS), or by M.tuberculosis antigens.

## Images

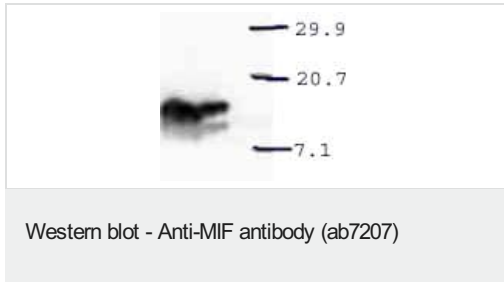


Anti-MIF antibody (ab7207) + LPS stimulated RAW cell lysate

Performed under reducing conditions.

**Predicted band size:** 12 kDa

MIF detected by Western Blot in LPS stimulated RAW cell lysate.



From a review by Arsi Rosengren.

**Please note:** All products are "FOR RESEARCH USE ONLY. NOT FOR USE IN DIAGNOSTIC PROCEDURES"

### Our Abpromise to you: Quality guaranteed and expert technical support

---

- Replacement or refund for products not performing as stated on the datasheet
- Valid for 12 months from date of delivery
- Response to your inquiry within 24 hours
- We provide support in Chinese, English, French, German, Japanese and Spanish
- Extensive multi-media technical resources to help you
- We investigate all quality concerns to ensure our products perform to the highest standards

If the product does not perform as described on this datasheet, we will offer a refund or replacement. For full details of the Abpromise, please visit <https://www.abcam.com/abpromise> or contact our technical team.

### Terms and conditions

---

- Guarantee only valid for products bought direct from Abcam or one of our authorized distributors