

## Product datasheet

# Anti-MIM antibody ab204127

[2 References](#) [1 Image](#)

### Overview

---

<b>Product name</b>	Anti-MIM antibody
<b>Description</b>	Rabbit polyclonal to MIM
<b>Host species</b>	Rabbit
<b>Tested applications</b>	<b>Suitable for:</b> WB
<b>Species reactivity</b>	<b>Reacts with:</b> Mouse
<b>Immunogen</b>	Synthetic peptide corresponding to Human MIM aa 100-200 conjugated to keyhole limpet haemocyanin. Database link: <a href="#">O43312</a>

 [Run BLAST with](#)

 [Run BLAST with](#)

### General notes

The Life Science industry has been in the grips of a reproducibility crisis for a number of years. Abcam is leading the way in addressing this with our range of recombinant monoclonal antibodies and knockout edited cell lines for gold-standard validation. Please check that this product meets your needs before purchasing.

If you have any questions, special requirements or concerns, please send us an inquiry and/or contact our Support team ahead of purchase. Recommended alternatives for this product can be found below, along with publications, customer reviews and Q&As

### Properties

---

<b>Form</b>	Liquid
<b>Storage instructions</b>	Shipped at 4°C. Store at +4°C short term (1-2 weeks). Upon delivery aliquot. Store at -20°C long term. Avoid freeze / thaw cycle.
<b>Storage buffer</b>	pH: 7.40 Preservative: 0.02% Proclin 300 Constituents: 50% Glycerol (glycerin, glycerine), 1% BSA, 48.98% TBS, 1X  Aqueous buffered solution
<b>Purity</b>	Protein A purified
<b>Clonality</b>	Polyclonal
<b>Isotype</b>	IgG

## Applications

### The Abpromise guarantee

Our **Abpromise guarantee** covers the use of ab204127 in the following tested applications.

The application notes include recommended starting dilutions; optimal dilutions/concentrations should be determined by the end user.

Application	Abreviews	Notes
WB		1/100 - 1/1000. Predicted molecular weight: 82 kDa.

## Target

### Function

May be related to cancer progression or tumor metastasis in a variety of organ sites, most likely through an interaction with the actin cytoskeleton.

### Tissue specificity

Expressed in many tissues, including spleen, thymus, prostate, testis, uterus, colon, and peripheral blood.

### Sequence similarities

Belongs to the MTSS1 family.  
Contains 1 IMD (IRSp53/MIM homology) domain.  
Contains 1 WH2 domain.

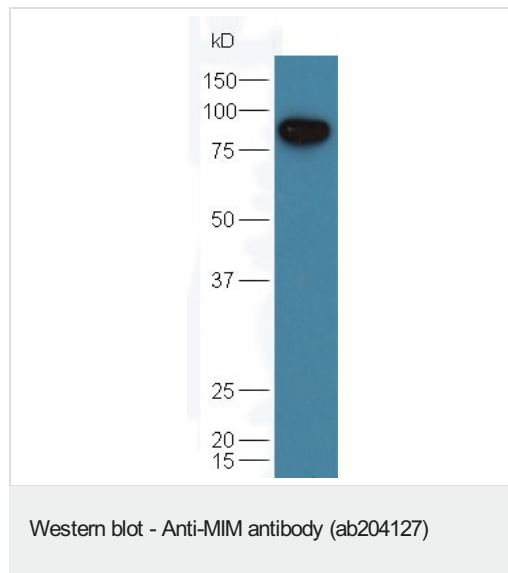
### Domain

The WH2 motif at the C-terminus binds to actin monomers.

### Cellular localization

Cytoplasm, cytoskeleton.

## Images



Anti-MIM antibody (ab204127) at 1/300 dilution + mouse testicular lysate

### Secondary

Goat Anti-Rabbit IgG Antibody (H+L), HRP at 1/5000 dilution

Developed using the ECL technique.

**Predicted band size:** 82 kDa

**Please note:** All products are "FOR RESEARCH USE ONLY. NOT FOR USE IN DIAGNOSTIC PROCEDURES"

## Our Abpromise to you: Quality guaranteed and expert technical support

- Replacement or refund for products not performing as stated on the datasheet
- Valid for 12 months from date of delivery

- Response to your inquiry within 24 hours
- We provide support in Chinese, English, French, German, Japanese and Spanish
- Extensive multi-media technical resources to help you
- We investigate all quality concerns to ensure our products perform to the highest standards

If the product does not perform as described on this datasheet, we will offer a refund or replacement. For full details of the Abpromise, please visit <https://www.abcam.com/abpromise> or contact our technical team.

### **Terms and conditions**

---

- Guarantee only valid for products bought direct from Abcam or one of our authorized distributors