

## Product datasheet

# Anti-MIP-1 alpha/CCL3 + CCL4/MIP-1 beta + CCL3L1 + CCL4L1 antibody [EPR19900-275] ab206429

Recombinant RabMAb

5 Images

### Overview

<b>Product name</b>	Anti-MIP-1 alpha/CCL3 + CCL4/MIP-1 beta + CCL3L1 + CCL4L1 antibody [EPR19900-275]
<b>Description</b>	Rabbit monoclonal [EPR19900-275] to MIP-1 alpha/CCL3 + CCL4/MIP-1 beta + CCL3L1 + CCL4L1
<b>Host species</b>	Rabbit
<b>Tested applications</b>	<b>Suitable for:</b> Flow Cyt (Intra), WB, ICC/IF <b>Unsuitable for:</b> IHC-P
<b>Species reactivity</b>	<b>Reacts with:</b> Human
<b>Immunogen</b>	Recombinant fragment. This information is proprietary to Abcam and/or its suppliers.
<b>Positive control</b>	WB: THP-1 (treated with 80nM TPA overnight, then 100 ng/ml LPS for 3 hours and then 300 ng/ml Brefeldin A added for the last 3 hours) whole cell lysate. ICC/IF: THP-1 cells (treated with 80nM TPA overnight, then treated with 100ng/ml LPS for 3h and together with 300ng/ml BFA for another 3h). Flow Cyt (intra): THP-1 cells (treated with 80nM TPA overnight, then treated with 100ng/ml LPS for 3h and together with 300ng/ml BFA for another 3h).
<b>General notes</b>	This product is a recombinant monoclonal antibody, which offers several advantages including: <ul style="list-style-type: none"> <li>- High batch-to-batch consistency and reproducibility</li> <li>- Improved sensitivity and specificity</li> <li>- Long-term security of supply</li> <li>- Animal-free production</li> </ul> For more information <a href="#">see here</a> . Our RabMAb <sup>®</sup> technology is a patented hybridoma-based technology for making rabbit monoclonal antibodies. For details on our patents, please refer to <a href="#">RabMAb<sup>®</sup> patents</a> .

### Properties

<b>Form</b>	Liquid
<b>Storage instructions</b>	Shipped at 4°C. Store at +4°C short term (1-2 weeks). Upon delivery aliquot. Store at -20°C long term. Avoid freeze / thaw cycle.
<b>Storage buffer</b>	pH: 7.2 Preservative: 0.01% Sodium azide

Constituents: PBS, 40% Glycerol (glycerin, glycerine), 0.05% BSA

**Purity** Protein A purified  
**Clonality** Monoclonal  
**Clone number** EPR19900-275  
**Isotype** IgG

## Applications

**The Abpromise guarantee** Our **Abpromise guarantee** covers the use of ab206429 in the following tested applications. The application notes include recommended starting dilutions; optimal dilutions/concentrations should be determined by the end user.

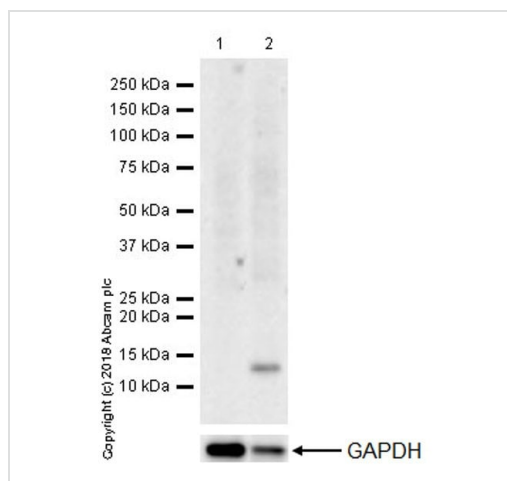
Application	Abreviews	Notes
Flow Cyt (Intra)		1/600.
WB		1/1000. Detects a band of approximately 12 kDa (predicted molecular weight: 10 kDa).
ICC/IF		1/100.

**Application notes** Is unsuitable for IHC-P.

## Target

**Cellular localization** MIP-1 alpha / CCL3: Secreted. CCL4/MIP-1 beta: Secreted. CCL3L1: Secreted. CCL4L1: Secreted.

## Images



Western blot - Anti-MIP-1 alpha/CCL3 + CCL4/MIP-1 beta + CCL3L1 + CCL4L1 antibody [EPR19900-275] (ab206429)

**All lanes** : Anti-MIP-1 alpha/CCL3 + CCL4/MIP-1 beta + CCL3L1 + CCL4L1 antibody [EPR19900-275] (ab206429) at 1/1000 dilution

**Lane 1** : Untreated THP-1 (human monocytic leukemia cell line) whole cell lysate

**Lane 2** : THP-1 (1 treated with 80nM TPA overnight, then 100 ng/ml LPS for 3 hours and then 300 ng/ml Brefeldin A was added for the last 3 hours) whole cell lysate

Lysates/proteins at 10 µg per lane.

### Secondary

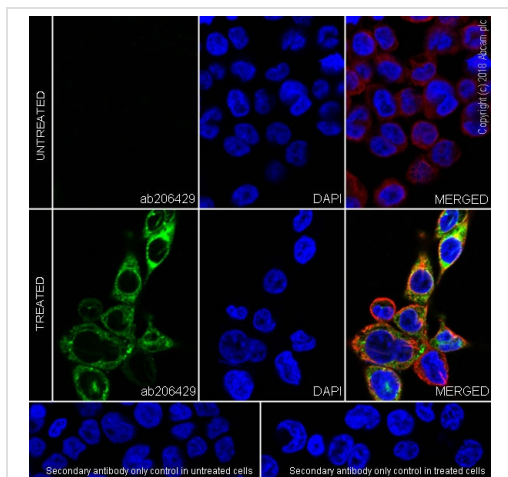
**All lanes** : Goat Anti-Rabbit IgG H&L (HRP) (**ab97051**) at 1/20000 dilution

**Predicted band size:** 10 kDa

**Observed band size:** 12 kDa

**Exposure time:** 3 minutes

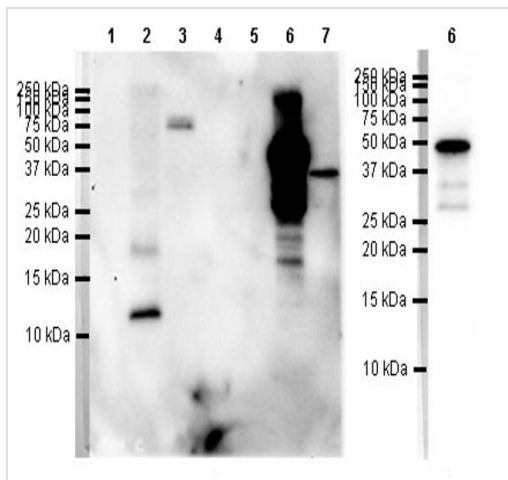
Blocking and dilution buffer: 5% NFDm/TBST.



Immunocytochemistry/ Immunofluorescence - Anti-MIP-1 alpha/CCL3 + CCL4/MIP-1 beta + CCL3L1 + CCL4L1 antibody [EPR19900-275] (ab206429)

Immunofluorescent analysis of 4% paraformaldehyde-fixed, 0.1% Triton X-100 permeabilized THP-1 (human monocytic leukemia cell line) cells labeling Macrophage Inflammatory Protein 1 alpha / CCL3 with ab206429 at 1/100 dilution, followed by Goat Anti-Rabbit IgG H&L (Alexa Fluor® 488) (**ab150077**) secondary antibody at 1/1000 dilution (green). Confocal image showing cytoplasmic staining in THP-1 cells treated with TPA (80nM overnight), then treated with 100ng/ml LPS for 3h and together with 300ng/ml BFA for another 3h. The nuclear counterstain is DAPI (blue). Tubulin is detected with Anti-alpha Tubulin antibody [DM1A] - Microtubule Marker (Alexa Fluor® 594) (**ab195889**) at 1/200 dilution (red).

Secondary antibody only control: Used PBS instead of primary antibody, followed by Goat Anti-Rabbit IgG H&L (Alexa Fluor® 488) (**ab150077**) secondary antibody at 1/1000 dilution.



Western blot - Anti-MIP-1 alpha/CCL3 + CCL4/MIP-1 beta + CCL3L1 + CCL4L1 antibody [EPR19900-275] (ab206429)

**All lanes :** Anti-MIP-1 alpha/CCL3 + CCL4/MIP-1 beta + CCL3L1 + CCL4L1 antibody [EPR19900-275] (ab206429) at 1/1000 dilution

**Lane 1 :** His-tagged mouse CCL3 Recombinant Protein

**Lane 2 :** His-tagged human CCL3 Recombinant Protein

**Lane 3 :** His-tagged human CCL4 Recombinant Protein

**Lanes 4-5 :** His-tagged human CCL18 Recombinant Protein

**Lane 6 :** GST-tagged human CCL3L1 Recombinant Protein

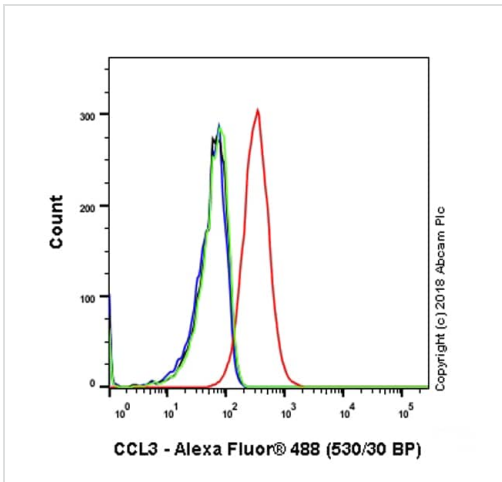
**Lane 7 :** GST-tagged human CCL4L1 Recombinant Protein

**Predicted band size:** 10 kDa

Exposure time:

Lanes 1-7 (left image): 180 seconds





Lane 6 (right image): 5 seconds



Intracellular flow cytometric analysis of 4% paraformaldehyde-fixed, 0.1% Tween 20 permeabilized THP-1 (human monocytic leukemia cell line) (treated with 80nM TPA overnight, then treated with 100ng/ml LPS for 3h and together with 300ng/ml BFA for another 3 hr) (red) or untreated (green) cells labeling Macrophage Inflammatory Protein 1 alpha / CCL3 with ab206429 at 1/600 dilution compared with a Rabbit IgG, monoclonal [EPR25A] - Isotype Control (**ab172730**) (black) and an unlabelled control (cells without incubation with primary antibody and secondary antibody) (blue). Goat Anti-Rabbit IgG H&L (Alexa Fluor® 488) (**ab150077**), at 1/2000 dilution was used as the secondary antibody.

Flow Cytometry (Intracellular) - Anti-MIP-1 alpha/CCL3 + CCL4/MIP-1 beta + CCL3L1 + CCL4L1 antibody [EPR19900-275] (ab206429)

Why choose a recombinant antibody?

 <p><b>Research with confidence</b> Consistent and reproducible results</p>	 <p><b>Long-term and scalable supply</b> Recombinant technology</p>
 <p><b>Success from the first experiment</b> Confirmed specificity</p>	 <p><b>Ethical standards compliant</b> Animal-free production</p>

Anti-MIP-1 alpha/CCL3 + CCL4/MIP-1 beta + CCL3L1 + CCL4L1 antibody [EPR19900-275] (ab206429)

**Please note:** All products are "FOR RESEARCH USE ONLY. NOT FOR USE IN DIAGNOSTIC PROCEDURES"

### Our Abpromise to you: Quality guaranteed and expert technical support

- Replacement or refund for products not performing as stated on the datasheet
- Valid for 12 months from date of delivery
- Response to your inquiry within 24 hours
- We provide support in Chinese, English, French, German, Japanese and Spanish
- Extensive multi-media technical resources to help you
- We investigate all quality concerns to ensure our products perform to the highest standards

If the product does not perform as described on this datasheet, we will offer a refund or replacement. For full details of the Abpromise,

please visit <https://www.abcam.com/abpromise> or contact our technical team.

## **Terms and conditions**

---

- Guarantee only valid for products bought direct from Abcam or one of our authorized distributors