


## Product datasheet

# Anti-MIS12 antibody ab70843

★★★★★ [2 Abreviews](#) [7 References](#) [3 Images](#)

### Overview

---

<b>Product name</b>	Anti-MIS12 antibody
<b>Description</b>	Rabbit polyclonal to MIS12
<b>Host species</b>	Rabbit
<b>Tested applications</b>	<b>Suitable for:</b> IP, IHC-P, WB
<b>Species reactivity</b>	<b>Reacts with:</b> Human <b>Predicted to work with:</b> Chimpanzee, Gorilla, Orangutan, Bat 
<b>Immunogen</b>	Synthetic peptide corresponding to Human MIS12 (C terminal). Database link: <a href="#">Q9H081</a>
<b>General notes</b>	<p>The Life Science industry has been in the grips of a reproducibility crisis for a number of years. Abcam is leading the way in addressing this with our range of recombinant monoclonal antibodies and knockout edited cell lines for gold-standard validation. Please check that this product meets your needs before purchasing.</p> <p>If you have any questions, special requirements or concerns, please send us an inquiry and/or contact our Support team ahead of purchase. Recommended alternatives for this product can be found below, along with publications, customer reviews and Q&amp;As</p>

### Properties

---

<b>Form</b>	Liquid
<b>Storage instructions</b>	Shipped at 4°C. Upon delivery aliquot and store at -20°C. Avoid freeze / thaw cycles.
<b>Storage buffer</b>	pH: 7 Preservative: 0.09% Sodium azide Constituents: 1.815% Tris, 1.764% Sodium citrate, 0.021% PBS
<b>Purity</b>	Immunogen affinity purified
<b>Clonality</b>	Polyclonal
<b>Isotype</b>	IgG

### Applications

---

**The Abpromise guarantee** Our **Abpromise guarantee** covers the use of ab70843 in the following tested applications.

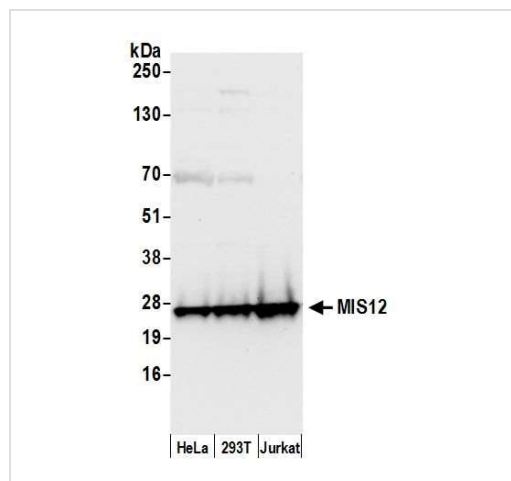
The application notes include recommended starting dilutions; optimal dilutions/concentrations should be determined by the end user.

Application	Abreviews	Notes
IP		Use at 2-5 - 5 µg/mg of lysate.
IHC-P		1/5000. Perform heat mediated antigen retrieval with Tris/EDTA buffer pH 9.0 before commencing with IHC staining protocol.
WB		Use a concentration of 0.1 µg/ml. Detects a band of approximately 34 kDa (predicted molecular weight: 24 kDa).

## Target

<b>Relevance</b>	MIS12 is part of a complex that plays an essential role in chromosome segregation in vertebrates and contributes to mitotic kinetochore assembly.
<b>Cellular localization</b>	Nucleus. Associated with the kinetochore.

## Images



Western blot - Anti-MIS12 antibody (ab70843)

**All lanes :** Anti-MIS12 antibody (ab70843) at 0.1 µg/ml

**Lane 1 :** HeLa whole cell lysate

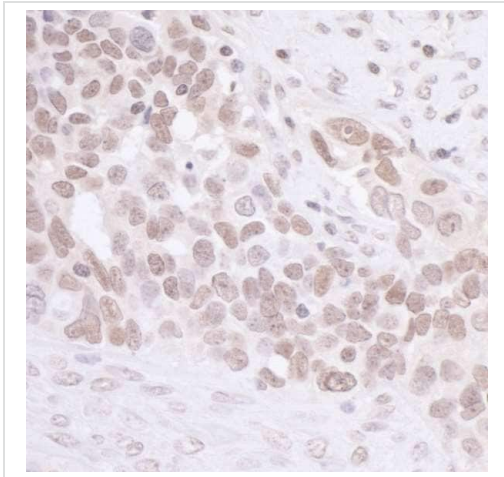
**Lane 2 :** HEK293T whole cell lysate

**Lane 3 :** Jurkat whole cell lysate

Lysates/proteins at 50 µg per lane.

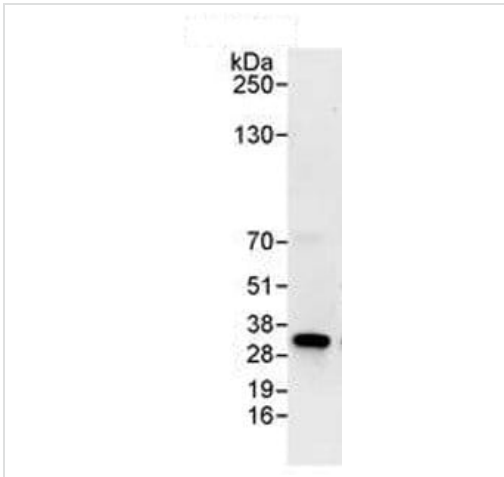
**Predicted band size:** 24 kDa

Detection: Chemiluminescence with an exposure time of 10 seconds



Immunohistochemistry (Formalin/PFA-fixed paraffin-embedded sections) analysis of human ovarian carcinoma tissue labelling MIS12 with ab70843 at 1/5000 (1 $\mu$ g/ml). Detection: DAB.

Immunohistochemistry (Formalin/PFA-fixed paraffin-embedded sections) - Anti-MIS12 antibody (ab70843)



HeLa whole cell lysate (at 1 mg for IP, 20% of IP loaded) with ab70843 at 1  $\mu$ g/ml for WB, subsequent to being used for IP at 3  $\mu$ g/mg lysate.  
Detection: Chemiluminescence with an exposure time of 30 seconds.

Immunoprecipitation - Anti-MIS12 antibody (ab70843)

**Please note:** All products are "FOR RESEARCH USE ONLY. NOT FOR USE IN DIAGNOSTIC PROCEDURES"

## **Our Abpromise to you: Quality guaranteed and expert technical support**

---

- Replacement or refund for products not performing as stated on the datasheet
- Valid for 12 months from date of delivery
- Response to your inquiry within 24 hours
  
- We provide support in Chinese, English, French, German, Japanese and Spanish
- Extensive multi-media technical resources to help you
- We investigate all quality concerns to ensure our products perform to the highest standards

If the product does not perform as described on this datasheet, we will offer a refund or replacement. For full details of the Abpromise, please visit <https://www.abcam.com/abpromise> or contact our technical team.

## **Terms and conditions**

---

- Guarantee only valid for products bought direct from Abcam or one of our authorized distributors