

Product datasheet

Anti-Mitofilin antibody ab93323

[3 References](#) [3 Images](#)

Overview

Product name	Anti-Mitofilin antibody
Description	Rabbit polyclonal to Mitofilin
Host species	Rabbit
Tested applications	Suitable for: ICC/IF
Species reactivity	Reacts with: Human
Immunogen	Recombinant full length protein (Human)
General notes	<p>The Life Science industry has been in the grips of a reproducibility crisis for a number of years. Abcam is leading the way in addressing this with our range of recombinant monoclonal antibodies and knockout edited cell lines for gold-standard validation. Please check that this product meets your needs before purchasing.</p> <p>If you have any questions, special requirements or concerns, please send us an inquiry and/or contact our Support team ahead of purchase. Recommended alternatives for this product can be found below, along with publications, customer reviews and Q&As</p>

Properties

Form	Liquid
Storage instructions	Shipped at 4°C. Upon delivery aliquot and store at -20°C. Avoid repeated freeze / thaw cycles.
Storage buffer	Preservative: 0.05% Sodium azide Constituent: Whole serum
Purity	Whole antiserum
Clonality	Polyclonal
Isotype	IgG

Applications

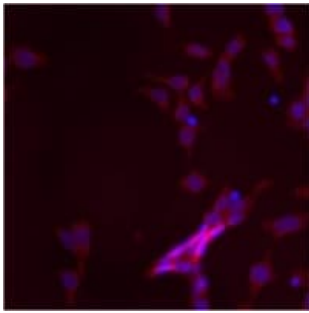
The Abpromise guarantee Our **Abpromise guarantee** covers the use of ab93323 in the following tested applications. The application notes include recommended starting dilutions; optimal dilutions/concentrations should be determined by the end user.

Application	Abreviews	Notes
ICC/IF		1/500.

Target

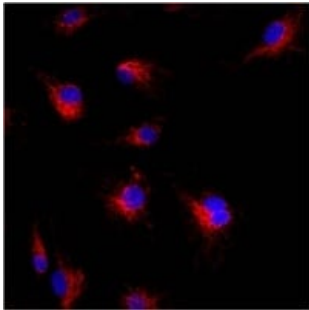
Cellular localization Mitochondrion inner membrane.

Images



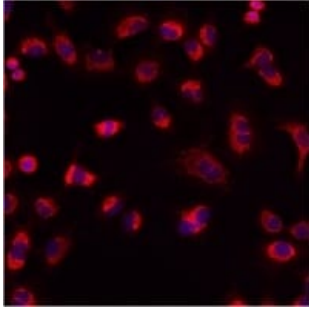
Immunofluorescent analysis of Mitofilin using anti-Mitofilin polyclonal antibody (ab93323) shows staining in p19 Cells.

Immunocytochemistry/ Immunofluorescence - Anti-Mitofilin antibody (ab93323)



Immunofluorescent analysis of Mitofilin using anti-Mitofilin polyclonal antibody (ab93323) shows staining in HMVEC Cells.

Immunocytochemistry/ Immunofluorescence - Anti-Mitofilin antibody (ab93323)



Immunofluorescent analysis of Mitofilin using anti-Mitofilin polyclonal antibody (ab93323) shows staining in A549 Cells.

Immunocytochemistry/ Immunofluorescence - Anti-Mitofilin antibody (ab93323)

Please note: All products are "FOR RESEARCH USE ONLY. NOT FOR USE IN DIAGNOSTIC PROCEDURES"

Our Abpromise to you: Quality guaranteed and expert technical support

- Replacement or refund for products not performing as stated on the datasheet
- Valid for 12 months from date of delivery
- Response to your inquiry within 24 hours

- We provide support in Chinese, English, French, German, Japanese and Spanish
- Extensive multi-media technical resources to help you
- We investigate all quality concerns to ensure our products perform to the highest standards

If the product does not perform as described on this datasheet, we will offer a refund or replacement. For full details of the Abpromise, please visit <https://www.abcam.com/abpromise> or contact our technical team.

Terms and conditions

- Guarantee only valid for products bought direct from Abcam or one of our authorized distributors