


Anti-MKK6 antibody ab154901

[2 References](#) [4 Images](#)

Overview

Product name	Anti-MKK6 antibody
Description	Rabbit polyclonal to MKK6
Host species	Rabbit
Tested applications	Suitable for: WB, IHC-P, ICC/IF
Species reactivity	Reacts with: Mouse, Human Predicted to work with: Rat, Cow 
Immunogen	Recombinant fragment corresponding to Human MKK6 aa 1-334. Database link: P52564
Positive control	WB: HEK-293T whole cell lysate. ICC/IF: HeLa cells. IHC-P: Human N87 xenograft tissue, mouse duodenum tissue.
General notes	<p>The Life Science industry has been in the grips of a reproducibility crisis for a number of years. Abcam is leading the way in addressing this with our range of recombinant monoclonal antibodies and knockout edited cell lines for gold-standard validation. Please check that this product meets your needs before purchasing.</p> <p>If you have any questions, special requirements or concerns, please send us an inquiry and/or contact our Support team ahead of purchase. Recommended alternatives for this product can be found below, along with publications, customer reviews and Q&As</p>

Properties

Form	Liquid
Storage instructions	Shipped at 4°C. Store at +4°C short term (1-2 weeks). Upon delivery aliquot. Store at -20°C or -80°C. Avoid freeze / thaw cycle.
Storage buffer	pH: 7.00 Preservative: 0.01% Thimerosal (merthiolate) Constituents: 1.21% Tris, 0.75% Glycine, 10% Glycerol (glycerin, glycerine)
Purity	Immunogen affinity purified
Clonality	Polyclonal
Isotype	IgG

Applications

The Abpromise guarantee

Our **Abpromise guarantee** covers the use of ab154901 in the following tested applications.

The application notes include recommended starting dilutions; optimal dilutions/concentrations should be determined by the end user.

Application	Abreviews	Notes
WB		1/500 - 1/3000. Predicted molecular weight: 37 kDa.
IHC-P		1/100 - 1/1000. Perform heat mediated antigen retrieval with citrate buffer pH 6 before commencing with IHC staining protocol. Alternatively antigen retrieval using heat mediated Tris/EDTA buffer (pH 8.0) may be used.
ICC/IF		1/100 - 1/1000.

Target

Function

Catalyzes the concomitant phosphorylation of a threonine and a tyrosine residue in MAP kinase p38 exclusively.

Tissue specificity

Isoform 2 is only expressed in skeletal muscle. Isoform 1 is expressed in skeletal muscle, heart, and in lesser extent in liver or pancreas.

Sequence similarities

Belongs to the protein kinase superfamily. STE Ser/Thr protein kinase family. MAP kinase kinase subfamily.
Contains 1 protein kinase domain.

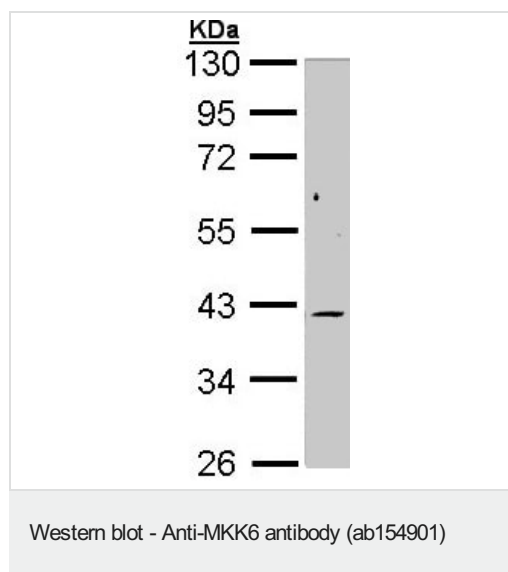
Post-translational modifications

Weakly autophosphorylated.
Acetylation of Ser-207 and Thr-211 by Yersinia yopJ prevents phosphorylation and activation, thus blocking the MAPK signaling pathway.

Form

It localizes to nucleus, cytoplasm and cytoskeleton. Note: Binds to microtubules.

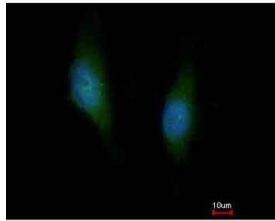
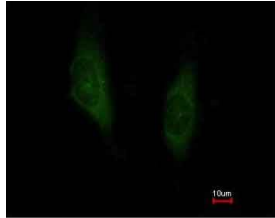
Images



Anti-MKK6 antibody (ab154901) at 1/1000 dilution + HEK-293T whole cell lysate at 30 µg

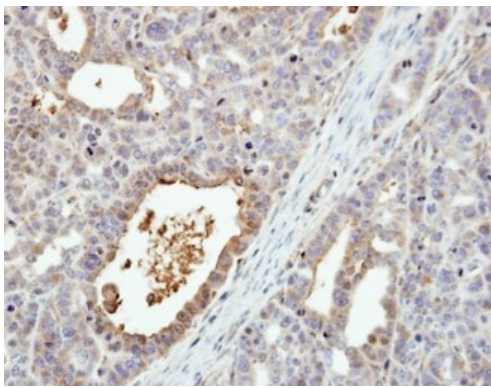
Predicted band size: 37 kDa

10% SDS PAGE



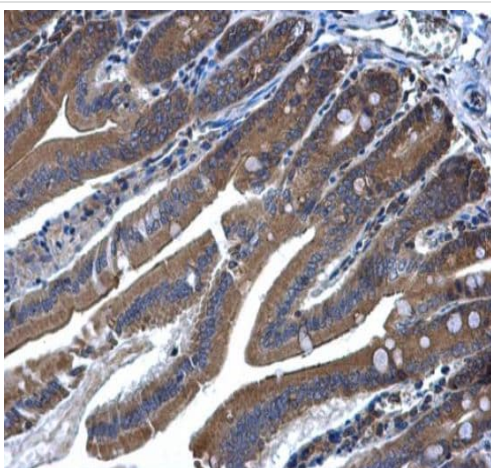
Immunocytochemistry/ Immunofluorescence - Anti-MKK6 antibody (ab154901)

Immunofluorescent analysis of methanol-fixed HeLa cells labeling MKK6 with ab154901 at 1/200 dilution. Lower image shows cells co-stained with Hoechst 33342.



Immunohistochemistry (Formalin/PFA-fixed paraffin-embedded sections) - Anti-MKK6 antibody (ab154901)

Immunohistochemical analysis of formalin-fixed, paraffin-embedded Human N87 xenograft tissue labeling MKK6 with ab154901 at 1/500 dilution.



Immunohistochemistry (Formalin/PFA-fixed paraffin-embedded sections) - Anti-MKK6 antibody (ab154901)

Paraffin embedded mouse duodenum tissue stained for MEK6 using ab154901 at 1/500 dilution in immunohistochemical analysis.

Please note: All products are "FOR RESEARCH USE ONLY. NOT FOR USE IN DIAGNOSTIC PROCEDURES"

Our Abpromise to you: Quality guaranteed and expert technical support

- Replacement or refund for products not performing as stated on the datasheet
- Valid for 12 months from date of delivery
- Response to your inquiry within 24 hours

- We provide support in Chinese, English, French, German, Japanese and Spanish
- Extensive multi-media technical resources to help you
- We investigate all quality concerns to ensure our products perform to the highest standards

If the product does not perform as described on this datasheet, we will offer a refund or replacement. For full details of the Abpromise, please visit <https://www.abcam.com/abpromise> or contact our technical team.

Terms and conditions

- Guarantee only valid for products bought direct from Abcam or one of our authorized distributors