

Product datasheet

Anti-MKK6 antibody [EP557Y] ab33866

KO **VALIDATED** RabMAb

[5 References](#) [3 Images](#)

Overview

Product name	Anti-MKK6 antibody [EP557Y]
Description	Rabbit monoclonal [EP557Y] to MKK6
Host species	Rabbit
Tested applications	Suitable for: WB, IP
Species reactivity	Reacts with: Mouse, Rat, Human
Immunogen	Synthetic peptide. This information is proprietary to Abcam and/or its suppliers.
Positive control	WB: HepG2, C2C12, HeLa, HAP1, and C6 lysates IP: HepG2 cells
General notes	<p>This product is a recombinant monoclonal antibody, which offers several advantages including:</p> <ul style="list-style-type: none">- High batch-to-batch consistency and reproducibility- Improved sensitivity and specificity- Long-term security of supply- Animal-free production <p>For more information see here.</p> <p>Our RabMAb[®] technology is a patented hybridoma-based technology for making rabbit monoclonal antibodies. For details on our patents, please refer to RabMAb[®] patents.</p> <p>The Life Science industry has been in the grips of a reproducibility crisis for a number of years. Abcam is leading the way in addressing this with our range of recombinant monoclonal antibodies and knockout edited cell lines for gold-standard validation. Please check that this product meets your needs before purchasing.</p> <p>If you have any questions, special requirements or concerns, please send us an inquiry and/or contact our Support team ahead of purchase. Recommended alternatives for this product can be found below, along with publications, customer reviews and Q&As</p>

Properties

Form	Liquid
Storage instructions	Shipped at 4°C. Store at +4°C short term (1-2 weeks). Upon delivery aliquot. Store at -20°C long term. Avoid freeze / thaw cycle.
Storage buffer	pH: 7.20 Preservative: 0.01% Sodium azide

	Constituents: 59% PBS, 40% Glycerol (glycerin, glycerine), 0.05% BSA
Purity	Protein A purified
Clonality	Monoclonal
Clone number	EP557Y
Isotype	IgG

Applications

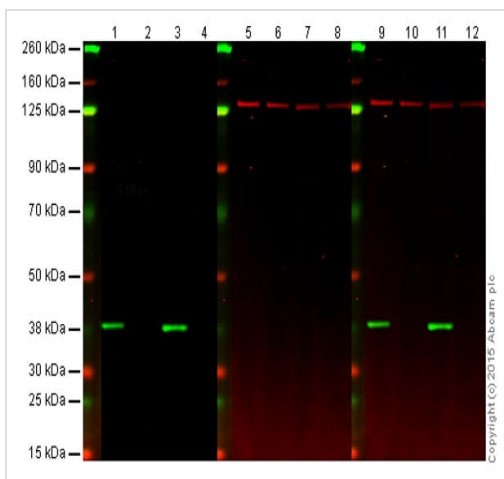
The Abpromise guarantee Our **Abpromise guarantee** covers the use of ab33866 in the following tested applications. The application notes include recommended starting dilutions; optimal dilutions/concentrations should be determined by the end user.

Application	Abreviews	Notes
WB		1/1000 - 1/10000. Detects a band of approximately 36 kDa (predicted molecular weight: 37 kDa).
IP		1/20 - 1/50.

Target

Function	Catalyzes the concomitant phosphorylation of a threonine and a tyrosine residue in MAP kinase p38 exclusively.
Tissue specificity	Isoform 2 is only expressed in skeletal muscle. Isoform 1 is expressed in skeletal muscle, heart, and in lesser extent in liver or pancreas.
Sequence similarities	Belongs to the protein kinase superfamily. STE Ser/Thr protein kinase family. MAP kinase kinase subfamily. Contains 1 protein kinase domain.
Post-translational modifications	Weakly autophosphorylated. Acetylation of Ser-207 and Thr-211 by Yersinia yopJ prevents phosphorylation and activation, thus blocking the MAPK signaling pathway.
Form	It localizes to nucleus, cytoplasm and cytoskeleton. Note: Binds to microtubules.

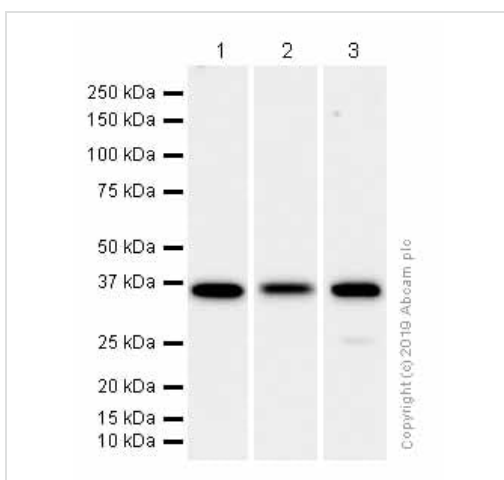
Images



Western blot - Anti-MKK6 antibody [EP557Y]
(ab33866)

Lanes 1, 5 and 9: Wild-type HAP1 cell lysate (20 µg)
Lanes 2, 6 and 10: MEK6 knockout HAP1 cell lysate (20 µg)
Lanes 3, 7 and 11: HeLa cell lysate (20 µg)
Lanes 4, 8 and 12: A431 cell lysate (20 µg)
Lanes 1, 2, 3 and 4: Green signal from target – ab33866 observed at 37 kDa
Lanes 5, 6, 7 and 8: Red signal from loading control – **ab18058** observed at 130 kDa
Lanes 9, 10, 11 and 12: Merged (red and green) signal

ab33866 (unpurified) was shown to specifically react with MEK6 when MEK6 knockout samples were used. Wild-type and MEK6 knockout samples were subjected to SDS-PAGE. ab33866 and **ab18058** (loading control to Vinculin) were diluted 1/10 000 and 1/2000 respectively and incubated overnight at 4°C. Blots were developed with Goat anti-Rabbit IgG H&L (IRDye® 800CW) preadsorbed (**ab216773**) and Goat anti-Mouse IgG H&L (IRDye® 680RD) preadsorbed (**ab216776**) secondary antibodies at 1/10 000 dilution for 1 h at room temperature before imaging.



Western blot - Anti-MKK6 antibody [EP557Y]
(ab33866)

All lanes : Anti-MKK6 antibody [EP557Y] (ab33866) at 1/1000 dilution

Lane 1 : HepG2 (Human hepatocellular carcinoma epithelial cell) whole cell lysates

Lane 2 : C2C12 (Mouse myoblasts myoblast) whole cell lysates

Lane 3 : C6 (Rat glial tumor glial cell) whole cell lysates

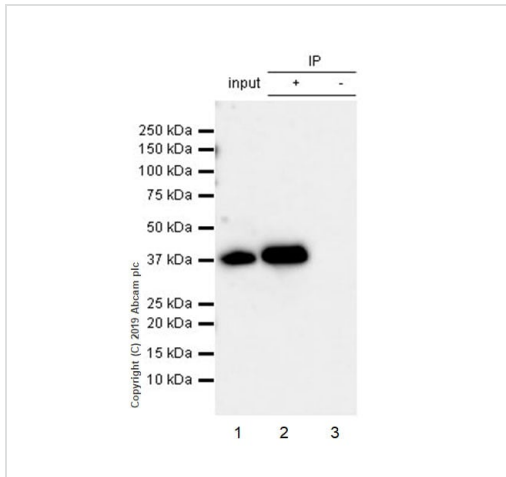
Lysates/proteins at 15 µg per lane.

Secondary

All lanes : Goat Anti-Rabbit IgG H&L (HRP) (**ab97051**) at 1/20000 dilution

Predicted band size: 37 kDa

Observed band size: 36 kDa



Immunoprecipitation - Anti-MKK6 antibody [EP557Y]
(ab33866)

ab33866 (purified) at 1/20 dilution (1 µg) immunoprecipitating MKK6 in HepG2 whole cell lysate.

Lane 1 (input): HepG2 (Human hepatocellular carcinoma epithelial cell) whole cell lysate 10 µg

Lane 2 (+): ab33866 & HepG2 whole cell lysate

Lane 3 (-): Rabbit monoclonal IgG (**ab172730**) instead of ab33866 in HepG2 whole cell lysate

For western blotting, VeriBlot for IP Detection Reagent (HRP) (**ab131366**) was used at 1/1000 dilution.

Blocking and diluting buffer: 5% NFD/MTBST.

Please note: All products are "FOR RESEARCH USE ONLY. NOT FOR USE IN DIAGNOSTIC PROCEDURES"

Our Abpromise to you: Quality guaranteed and expert technical support

- Replacement or refund for products not performing as stated on the datasheet
- Valid for 12 months from date of delivery
- Response to your inquiry within 24 hours
- We provide support in Chinese, English, French, German, Japanese and Spanish
- Extensive multi-media technical resources to help you
- We investigate all quality concerns to ensure our products perform to the highest standards

If the product does not perform as described on this datasheet, we will offer a refund or replacement. For full details of the Abpromise, please visit <https://www.abcam.com/abpromise> or contact our technical team.

Terms and conditions

- Guarantee only valid for products bought direct from Abcam or one of our authorized distributors