




Product datasheet

Anti-MKK6 (phospho S207) antibody ab131257

3 Images

Overview

Product name	Anti-MKK6 (phospho S207) antibody
Description	Rabbit polyclonal to MKK6 (phospho S207)
Host species	Rabbit
Tested applications	Suitable for: WB, IHC-P, ICC/IF
Species reactivity	Reacts with: Human Predicted to work with: Mouse 
Immunogen	Synthetic peptide within Human MKK6 (phospho S207) conjugated to keyhole limpet haemocyanin. The exact immunogen sequence used to generate this antibody is proprietary information. If additional detail on the immunogen is needed to determine the suitability of the antibody for your needs, please contact our Scientific Support team to discuss your requirements. Database link: P52564 <div>  Run BLAST with  Run BLAST with </div>
Positive control	WB: HL60 cell extract treated with PMA. ICC/IF: HeLa cells. IHC-P: Human breast carcinoma tissue.
General notes	<p>The Life Science industry has been in the grips of a reproducibility crisis for a number of years. Abcam is leading the way in addressing this with our range of recombinant monoclonal antibodies and knockout edited cell lines for gold-standard validation. Please check that this product meets your needs before purchasing.</p> <p>If you have any questions, special requirements or concerns, please send us an inquiry and/or contact our Support team ahead of purchase. Recommended alternatives for this product can be found below, along with publications, customer reviews and Q&As</p>

Properties

Form	Liquid
Storage instructions	Shipped at 4°C. Store at -20°C. Stable for 12 months at -20°C.
Storage buffer	<p>pH: 7.40</p> <p>Preservative: 0.02% Sodium azide</p> <p>Constituents: 49% PBS, 50% Glycerol (glycerin, glycerine), 0.88% Sodium chloride</p> <p>PBS is without Mg²⁺ and Ca²⁺</p>

Purity	Immunogen affinity purified
Purification notes	Antibody was purified by affinity-chromatography using epitope-specific phosphopeptide. Non-phospho specific antibodies were removed by chromatography using non-phosphopeptide.
Clonality	Polyclonal
Isotype	IgG

Applications

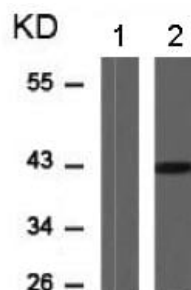
The Abpromise guarantee Our **Abpromise guarantee** covers the use of ab131257 in the following tested applications. The application notes include recommended starting dilutions; optimal dilutions/concentrations should be determined by the end user.

Application	Abreviews	Notes
WB		1/500 - 1/1000. Detects a band of approximately 41 kDa (predicted molecular weight: 37 kDa). Note: incubate membrane with diluted antibody in 5% nonfat milk, 1X TBS, 0.1% Tween 20 at 4°C with gentle shaking, overnight.
IHC-P		1/50 - 1/100.
ICC/IF		1/100 - 1/200.

Target

Function	Catalyzes the concomitant phosphorylation of a threonine and a tyrosine residue in MAP kinase p38 exclusively.
Tissue specificity	Isoform 2 is only expressed in skeletal muscle. Isoform 1 is expressed in skeletal muscle, heart, and in lesser extent in liver or pancreas.
Sequence similarities	Belongs to the protein kinase superfamily. STE Ser/Thr protein kinase family. MAP kinase kinase subfamily. Contains 1 protein kinase domain.
Post-translational modifications	Weakly autophosphorylated. Acetylation of Ser-207 and Thr-211 by Yersinia yopJ prevents phosphorylation and activation, thus blocking the MAPK signaling pathway.
Form	It localizes to nucleus, cytoplasm and cytoskeleton. Note: Binds to microtubules.

Images



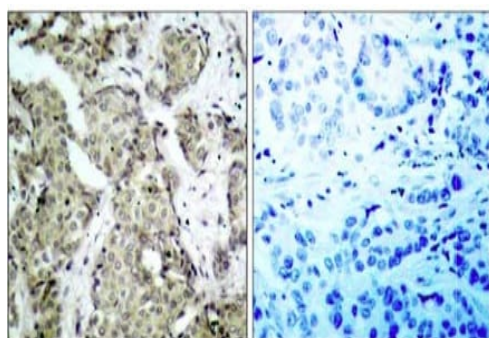
Western blot - Anti-MKK6 (phospho S207) antibody (ab131257)

All lanes : Anti-MKK6 (phospho S207) antibody (ab131257) at 1/500 dilution

Lane 1 : HL60 cell extract untreated

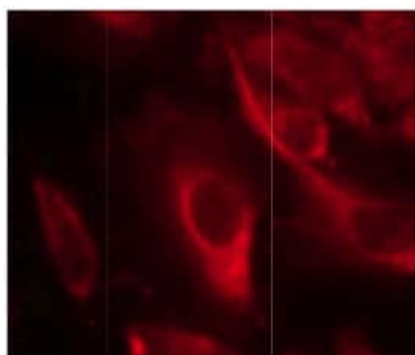
Lane 2 : HL60 cell extract treated with PMA

Predicted band size: 37 kDa



Immunohistochemistry (Formalin/PFA-fixed paraffin-embedded sections) - Anti-MKK6 (phospho S207) antibody (ab131257)

Immunohistochemical analysis of paraffin embedded Human breast carcinoma tissue labelling MKK6 (phospho S207) with ab131257 antibody at a dilution of 1/50. Picture on the right was preincubated with blocking peptide.



Immunocytochemistry/ Immunofluorescence - Anti-MKK6 (phospho S207) antibody (ab131257)

Immunofluorescence of methanol-fixed HeLa cells staining MKK6 (phospho S207) with ab131257 antibody at a dilution of 1/100.

Our Abpromise to you: Quality guaranteed and expert technical support

- Replacement or refund for products not performing as stated on the datasheet
- Valid for 12 months from date of delivery
- Response to your inquiry within 24 hours

- We provide support in Chinese, English, French, German, Japanese and Spanish
- Extensive multi-media technical resources to help you
- We investigate all quality concerns to ensure our products perform to the highest standards

If the product does not perform as described on this datasheet, we will offer a refund or replacement. For full details of the Abpromise, please visit <https://www.abcam.com/abpromise> or contact our technical team.

Terms and conditions

- Guarantee only valid for products bought direct from Abcam or one of our authorized distributors