


Product datasheet

Anti-Mkl1/MRTFA antibody ab113264

[3 References](#) [1 Image](#)

Overview

Product name	Anti-Mkl1/MRTFA antibody
Description	Rabbit polyclonal to Mkl1/MRTFA
Host species	Rabbit
Tested applications	Suitable for: IHC-P
Species reactivity	Reacts with: Human Predicted to work with: Chimpanzee, Gorilla, Orangutan 
Immunogen	Synthetic peptide corresponding to Human Mkl1/MRTFA aa 700-800. Database link: NP_065882.1
Positive control	Human Breast Carcinoma, Prostate Carcinoma, Skin Basal Cell Carcinoma tissue.
General notes	<p>The Life Science industry has been in the grips of a reproducibility crisis for a number of years. Abcam is leading the way in addressing this with our range of recombinant monoclonal antibodies and knockout edited cell lines for gold-standard validation. Please check that this product meets your needs before purchasing.</p> <p>If you have any questions, special requirements or concerns, please send us an inquiry and/or contact our Support team ahead of purchase. Recommended alternatives for this product can be found below, along with publications, customer reviews and Q&As</p>

Properties

Form	Liquid
Storage instructions	Shipped at 4°C. Upon delivery aliquot and store at -20°C. Avoid freeze / thaw cycles.
Storage buffer	pH: 6.8 Preservative: 0.09% Sodium azide Constituents: 99% Tris buffered saline, 0.1% BSA
Purity	Immunogen affinity purified
Clonality	Polyclonal
Isotype	IgG

Applications

The Abpromise guarantee

Our **Abpromise guarantee** covers the use of ab113264 in the following tested applications.

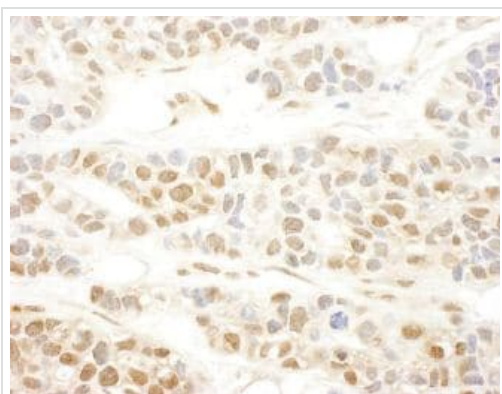
The application notes include recommended starting dilutions; optimal dilutions/concentrations should be determined by the end user.

Application	Abreviews	Notes
IHC-P		1/100 - 1/500. Perform heat mediated antigen retrieval with citrate buffer pH 6 before commencing with IHC staining protocol.

Target

Function	Transcriptional coactivator of serum response factor (SRF) with the potential to modulate SRF target genes. Suppresses TNF-induced cell death by inhibiting activation of caspases; its transcriptional activity is indispensable for the antiapoptotic function. It may up-regulate antiapoptotic molecules, which in turn inhibit caspase activation.
Tissue specificity	Ubiquitously expressed, has been detected in lung, placenta, small intestine, liver, kidney, spleen, thymus, colon, muscle, heart and brain.
Involvement in disease	Note=A chromosomal aberration involving MKL1 may be a cause of acute megakaryoblastic leukemia. Translocation t(1;22)(p13;q13) with RBM15. Although both reciprocal fusion transcripts are detected in acute megakaryoblastic leukemia (AMKL, FAB-M7), the RBM15-MKL1 chimeric protein has all the putative functional domains encoded by each gene and is the candidate oncogene.
Sequence similarities	Contains 2 RPEL repeats. Contains 1 SAP domain.
Domain	The N-terminal region is required for nuclear localization and the C-terminal region mediates transcriptional activity. The RPEL repeats mediate binding to globular actin.
Cellular localization	Cytoplasm. Nucleus. Binding to globular actin is required to maintain cytoplasmic localization.

Images



Formalin-fixed, paraffin-embedded section of Human breast carcinoma.

Antibody: ab113264 used at a dilution of 1/250.

Detection: DAB staining.

Immunohistochemistry (Formalin/PFA-fixed paraffin-embedded sections) - Anti-Mkl1/MRTFA antibody (ab113264)

Please note: All products are "FOR RESEARCH USE ONLY. NOT FOR USE IN DIAGNOSTIC PROCEDURES"

Our Abpromise to you: Quality guaranteed and expert technical support

- Replacement or refund for products not performing as stated on the datasheet
- Valid for 12 months from date of delivery
- Response to your inquiry within 24 hours

- We provide support in Chinese, English, French, German, Japanese and Spanish
- Extensive multi-media technical resources to help you
- We investigate all quality concerns to ensure our products perform to the highest standards

If the product does not perform as described on this datasheet, we will offer a refund or replacement. For full details of the Abpromise, please visit <https://www.abcam.com/abpromise> or contact our technical team.

Terms and conditions

- Guarantee only valid for products bought direct from Abcam or one of our authorized distributors