




Product datasheet

Anti-MKP-1 antibody ab1351

★★★★★ [6 Abreviews](#) [9 References](#) [1 Image](#)

Overview

Product name	Anti-MKP-1 antibody
Description	Goat polyclonal to MKP-1
Host species	Goat
Specificity	The immunogen sequence for ab1351, anti MKP-1 antibody (aka DUSP1), shares 100% sequence homology to MKP-2 (aka DUSP4).
Tested applications	Suitable for: WB
Species reactivity	Reacts with: Human Predicted to work with: Cow, Dog 
Immunogen	Synthetic peptide corresponding to Human MKP-1 aa 355-367 (C terminal). The immunogen sequence for ab1351, anti MKP-1 antibody (aka DUSP1), shares 100% sequence homology to MKP-2 (aka DUSP4). Sequence: SYLQSPITTSPSC Database link: P28562 <div>  Run BLAST with  Run BLAST with </div>
Positive control	Recombinant Human MKP-1 protein (ab114331) can be used as a positive control in WB. WB: HeLa cell lysate
General notes	<p>The Life Science industry has been in the grips of a reproducibility crisis for a number of years. Abcam is leading the way in addressing this with our range of recombinant monoclonal antibodies and knockout edited cell lines for gold-standard validation. Please check that this product meets your needs before purchasing.</p> <p>If you have any questions, special requirements or concerns, please send us an inquiry and/or contact our Support team ahead of purchase. Recommended alternatives for this product can be found below, along with publications, customer reviews and Q&As</p>

Properties

Form	Liquid
Storage instructions	Shipped at 4°C. Upon delivery aliquot and store at -20°C or -80°C. Avoid repeated freeze / thaw cycles.

Storage buffer	pH: 7.30 Preservative: 0.02% Sodium azide Constituents: Tris buffered saline, 0.5% BSA
Purity	Immunogen affinity purified
Purification notes	Purified from goat serum by ammonium sulphate precipitation followed by antigen affinity chromatography using the immunizing peptide.
Clonality	Polyclonal
Isotype	IgG

Applications

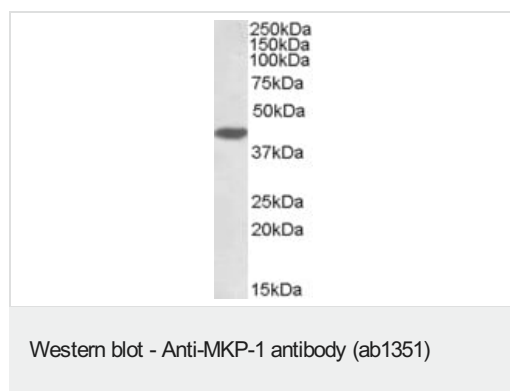
The Abpromise guarantee Our **Abpromise guarantee** covers the use of ab1351 in the following tested applications. The application notes include recommended starting dilutions; optimal dilutions/concentrations should be determined by the end user.

Application	Abreviews	Notes
WB	★★★★★ (5)	Use a concentration of 1 - 3 µg/ml. Predicted molecular weight: 39 kDa. A 1 hour primary incubation is recommended for this product. We recommend blocking in milk (3% milk in TBST) for 1 hour at room temperature.

Target

Function	Dual specificity phosphatase that dephosphorylates MAP kinase ERK2 on both 'Thr-183' and 'Tyr-185'.
Tissue specificity	Expressed at high levels in the lung, liver placenta and pancreas. Moderate levels seen in the heart and skeletal muscle. Lower levels found in the brain and kidney.
Sequence similarities	Belongs to the protein-tyrosine phosphatase family. Non-receptor class dual specificity subfamily. Contains 1 rhodanese domain. Contains 1 tyrosine-protein phosphatase domain.

Images



Anti-MKP-1 antibody (ab1351) at 1 µg/ml + HeLa cell lysate at 35 µg

Predicted band size: 39 kDa

Observed band size: ~40 kDa

Primary incubation was 1 hour.

Please note: All products are "FOR RESEARCH USE ONLY. NOT FOR USE IN DIAGNOSTIC PROCEDURES"

Our Abpromise to you: Quality guaranteed and expert technical support

- Replacement or refund for products not performing as stated on the datasheet
- Valid for 12 months from date of delivery
- Response to your inquiry within 24 hours

- We provide support in Chinese, English, French, German, Japanese and Spanish
- Extensive multi-media technical resources to help you
- We investigate all quality concerns to ensure our products perform to the highest standards

If the product does not perform as described on this datasheet, we will offer a refund or replacement. For full details of the Abpromise, please visit <https://www.abcam.com/abpromise> or contact our technical team.

Terms and conditions

- Guarantee only valid for products bought direct from Abcam or one of our authorized distributors