


Anti-MKP-1 antibody ab217347

1 Image

Overview

| | |
|----------------------------|---|
| Product name | Anti-MKP-1 antibody |
| Description | Rabbit polyclonal to MKP-1 |
| Host species | Rabbit |
| Tested applications | Suitable for: IHC-P |
| Species reactivity | Reacts with: Mouse Predicted to work with: Rat, Human  |
| Immunogen | Synthetic peptide within Human MKP-1 aa 175-225 conjugated to keyhole limpet haemocyanin. The exact sequence is proprietary. Database link: P28562 |
| Positive control | IHC-P: Mouse lymphoma tissue. |
| General notes | <p>The Life Science industry has been in the grips of a reproducibility crisis for a number of years. Abcam is leading the way in addressing this with our range of recombinant monoclonal antibodies and knockout edited cell lines for gold-standard validation. Please check that this product meets your needs before purchasing.</p> <p>If you have any questions, special requirements or concerns, please send us an inquiry and/or contact our Support team ahead of purchase. Recommended alternatives for this product can be found below, along with publications, customer reviews and Q&As</p> |

Properties

| | |
|-----------------------------|---|
| Form | Liquid |
| Storage instructions | Shipped at 4°C. Store at +4°C short term (1-2 weeks). Upon delivery aliquot. Store at -20°C. Avoid freeze / thaw cycle. |
| Storage buffer | pH: 7.40 Preservative: 0.02% Proclin 300 Constituents: 50% Glycerol (glycerin, glycerine), 1% BSA, 48.98% TBS, 1X |
| Purity | Protein A purified |
| Clonality | Polyclonal |
| Isotype | IgG |

Applications

The Abpromise guarantee

Our **Abpromise guarantee** covers the use of ab217347 in the following tested applications.

The application notes include recommended starting dilutions; optimal dilutions/concentrations should be determined by the end user.

| Application | Abreviews | Notes |
|-------------|-----------|----------------|
| IHC-P | | 1/100 - 1/500. |

Target

Function

Dual specificity phosphatase that dephosphorylates MAP kinase ERK2 on both 'Thr-183' and 'Tyr-185'.

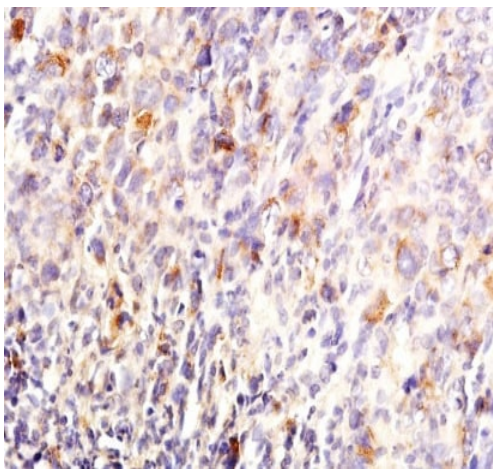
Tissue specificity

Expressed at high levels in the lung, liver placenta and pancreas. Moderate levels seen in the heart and skeletal muscle. Lower levels found in the brain and kidney.

Sequence similarities

Belongs to the protein-tyrosine phosphatase family. Non-receptor class dual specificity subfamily. Contains 1 rhodanese domain.
Contains 1 tyrosine-protein phosphatase domain.

Images



Immunohistochemical analysis of formalin-fixed paraffin-embedded mouse lymphoma tissue sections labeling MKP-1 with ab217347 at a 1/200 dilution. DAB staining.

Immunohistochemistry (Formalin/PFA-fixed paraffin-embedded sections) - Anti-MKP-1 antibody (ab217347)

Please note: All products are "FOR RESEARCH USE ONLY. NOT FOR USE IN DIAGNOSTIC PROCEDURES"

Our Abpromise to you: Quality guaranteed and expert technical support

- Replacement or refund for products not performing as stated on the datasheet
- Valid for 12 months from date of delivery
- Response to your inquiry within 24 hours

- We provide support in Chinese, English, French, German, Japanese and Spanish
- Extensive multi-media technical resources to help you
- We investigate all quality concerns to ensure our products perform to the highest standards

If the product does not perform as described on this datasheet, we will offer a refund or replacement. For full details of the Abpromise, please visit <https://www.abcam.com/abpromise> or contact our technical team.

Terms and conditions

- Guarantee only valid for products bought direct from Abcam or one of our authorized distributors