

Product datasheet

Anti-MLKL (phospho Y222) antibody [EPR19816] ab206336

Recombinant RabMAb

[1 References](#) [2 Images](#)

Overview

Product name	Anti-MLKL (phospho Y222) antibody [EPR19816]
Description	Rabbit monoclonal [EPR19816] to MLKL (phospho Y222)
Host species	Rabbit
Tested applications	Suitable for: WB
Species reactivity	Reacts with: Human
Immunogen	Synthetic peptide. This information is proprietary to Abcam and/or its suppliers.
Positive control	WB: HEK-293T transfected with NPM (nucleophosmin)-ALK (anaplastic lymphoma kinase) and MLKL-WT expression vector, whole cell lysate; HEK-293T transfected with NPM (nucleophosmin)-ALK (anaplastic lymphoma kinase) and MLKL-Y23F mutant expression vector, whole cell lysate; HEK-293T transfected with NPM (nucleophosmin)-ALK (anaplastic lymphoma kinase) and MLKL-Y218F mutant expression vector, whole cell lysate
General notes	<p>This product is a recombinant monoclonal antibody, which offers several advantages including:</p> <ul style="list-style-type: none"> - High batch-to-batch consistency and reproducibility - Improved sensitivity and specificity - Long-term security of supply - Animal-free production <p>For more information see here.</p> <p>Our RabMAb[®] technology is a patented hybridoma-based technology for making rabbit monoclonal antibodies. For details on our patents, please refer to RabMAb[®] patents.</p>

Properties

Form	Liquid
Storage instructions	Shipped at 4°C. Store at +4°C short term (1-2 weeks). Upon delivery aliquot. Store at -20°C long term. Avoid freeze / thaw cycle.
Storage buffer	<p>pH: 7.2</p> <p>Preservative: 0.01% Sodium azide</p> <p>Constituents: 59% PBS, 40% Glycerol (glycerin, glycerine), 0.05% BSA</p>
Purity	Protein A purified

Clonality	Monoclonal
Clone number	EPR19816
Isotype	IgG

Applications

The Abpromise guarantee Our **Abpromise guarantee** covers the use of ab206336 in the following tested applications. The application notes include recommended starting dilutions; optimal dilutions/concentrations should be determined by the end user.

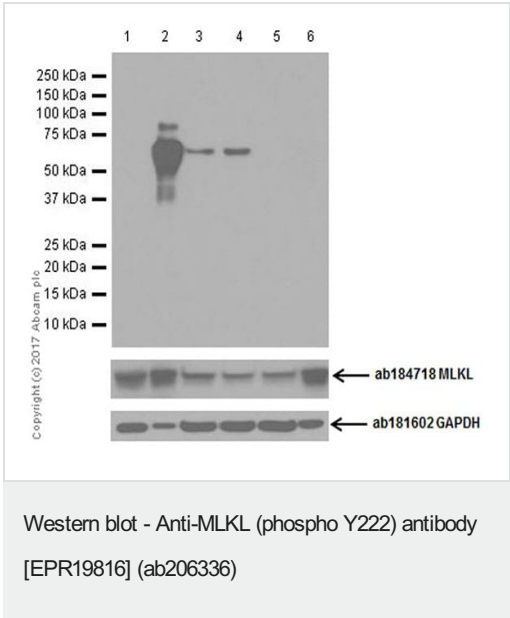
Application	Abreviews	Notes
WB		1/1000. Detects a band of approximately 54 kDa (predicted molecular weight: 54 kDa).

Target

Sequence similarities Belongs to the protein kinase superfamily. Contains 1 protein kinase domain.

Domain The protein kinase domain is predicted to be catalytically inactive.

Images



All lanes : Anti-MLKL (phospho Y222) antibody [EPR19816] (ab206336) at 1/1000 dilution

Lane 1 : HEK-293T (Human epithelial cell line from embryonic kidney) transfected with MLKL-WT expression vector, whole cell lysate at 20 µg

Lane 2 : HEK-293T (Human epithelial cell line from embryonic kidney) transfected with NPM (nucleophosmin)-ALK (anaplastic lymphoma kinase) and MLKL-WT expression vector, whole cell lysate at 4 µg

Lane 3 : HEK-293T (Human epithelial cell line from embryonic kidney) transfected with NPM (nucleophosmin)-ALK (anaplastic lymphoma kinase) and MLKL-Y23F mutant expression vector, whole cell lysate at 20 µg

Lane 4 : HEK-293T (Human epithelial cell line from embryonic kidney) transfected with NPM (nucleophosmin)-ALK (anaplastic lymphoma kinase) and MLKL-Y218F mutant expression vector, whole cell lysate at 20 µg

Lane 5 : HEK-293T (Human epithelial cell line from embryonic kidney) transfected with NPM (nucleophosmin)-ALK (anaplastic lymphoma kinase) and MLKL-Y222F mutant expression vector,

whole cell lysate at 20 µg

Lane 6 : HEK-293T (Human epithelial cell line from embryonic kidney) transfected with NPM (nucleophosmin)-ALK (anaplastic lymphoma kinase) and MLKL-Y218/222F mutant expression vector, whole cell lysate at 8 µg

Secondary

All lanes : Goat Anti-Rabbit IgG H&L (HRP) (**ab97051**) at 1/100000 dilution

Predicted band size: 54 kDa

Observed band size: 54 kDa

Exposure time: 1 minute



Blocking/Dilution buffer: 5% NFDM/TBST.

Lysates were kindly provided by our collaborator Dr. Xinhua Feng, Zhejiang University.

The molecular weight of NPM-ALK is around 80 kDa (lane 2) [PMID: 11090048].

This antibody can potentially cross react with other kinases.

Why choose a recombinant antibody?

 <p>Research with confidence Consistent and reproducible results</p>	 <p>Long-term and scalable supply Recombinant technology</p>
 <p>Success from the first experiment Confirmed specificity</p>	 <p>Ethical standards compliant Animal-free production</p>

Anti-MLKL (phospho Y222) antibody [EPR19816] (ab206336)

Please note: All products are "FOR RESEARCH USE ONLY. NOT FOR USE IN DIAGNOSTIC PROCEDURES"

Our Abpromise to you: Quality guaranteed and expert technical support

- Replacement or refund for products not performing as stated on the datasheet
- Valid for 12 months from date of delivery
- Response to your inquiry within 24 hours
- We provide support in Chinese, English, French, German, Japanese and Spanish
- Extensive multi-media technical resources to help you
- We investigate all quality concerns to ensure our products perform to the highest standards

If the product does not perform as described on this datasheet, we will offer a refund or replacement. For full details of the Abpromise, please visit <https://www.abcam.com/abpromise> or contact our technical team.

Terms and conditions

- Guarantee only valid for products bought direct from Abcam or one of our authorized distributors