

Product datasheet

Anti-MLLT11 antibody [CHCR115] ab109016

Recombinant RabMAb

★★★★★ [3 Abreviews](#) [4 References](#) [3 Images](#)

Overview

Product name	Anti-MLLT11 antibody [CHCR115]
Description	Rabbit monoclonal [CHCR115] to MLLT11
Host species	Rabbit
Tested applications	Suitable for: WB, IHC-P Unsuitable for: Flow Cyt or IP
Species reactivity	Reacts with: Human
Immunogen	Synthetic peptide. This information is proprietary to Abcam and/or its suppliers.
Positive control	Jurkat, K562 and Molt-4 cell lysates; Human thymus tissue
General notes	<p>This product is a recombinant monoclonal antibody, which offers several advantages including:</p> <ul style="list-style-type: none">- High batch-to-batch consistency and reproducibility- Improved sensitivity and specificity- Long-term security of supply- Animal-free production <p>For more information see here.</p> <p>Our RabMAb[®] technology is a patented hybridoma-based technology for making rabbit monoclonal antibodies. For details on our patents, please refer to RabMAb[®] patents.</p> <p>Mouse, Rat: We have preliminary internal testing data to indicate this antibody may not react with these species. Please contact us for more information.</p>

Properties

Form	Liquid
Storage instructions	Shipped at 4°C. Store at -20°C. Stable for 12 months at -20°C.
Storage buffer	pH: 7.20 Preservative: 0.05% Sodium azide Constituents: 40% Glycerol (glycerin, glycerine), 9.85% Tris glycine, 50% Tissue culture supernatant
Purity	Tissue culture supernatant
Clonality	Monoclonal

Clone number CHCR115
Isotype IgG

Applications

The Abpromise guarantee Our **Abpromise guarantee** covers the use of ab109016 in the following tested applications. The application notes include recommended starting dilutions; optimal dilutions/concentrations should be determined by the end user.

Application	Abreviews	Notes
WB		1/1000 - 1/10000. Predicted molecular weight: 10 kDa.
IHC-P	★★★★★ (2)	1/100 - 1/250. Perform heat mediated antigen retrieval with citrate buffer pH 6 before commencing with IHC staining protocol.

Application notes Is unsuitable for Flow Cyt or IP.

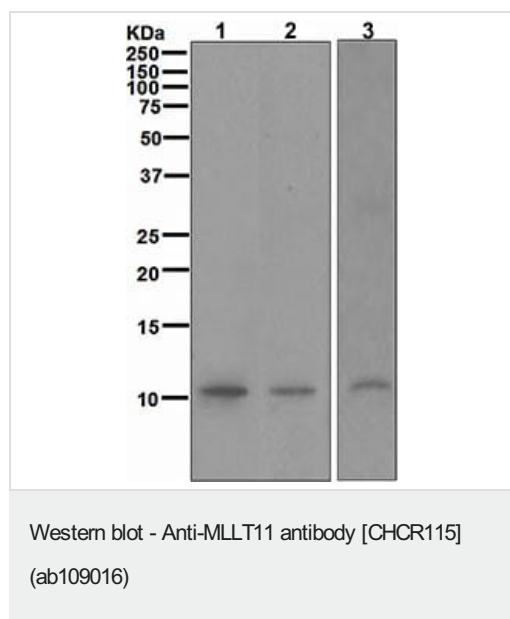
Target

Tissue specificity Highly expressed in thymus and all leukemic cell lines.

Involvement in disease A chromosomal aberration involving MLLT11 is found in acute leukemias. Translocation t(1;11) (q21;q23) with KMT2A/MLL1.

Sequence similarities Belongs to the MLLT11 family.

Images



All lanes : Anti-MLLT11 antibody [CHCR115] (ab109016) at 1/1000 dilution

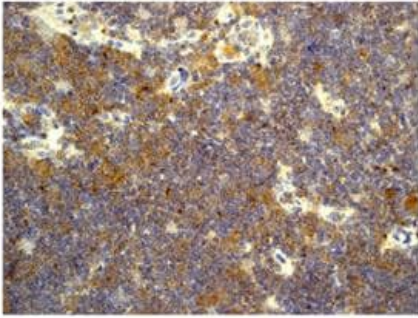
Lane 1 : Jurkat cell lysate

Lane 2 : K562 cell lysate

Lane 3 : Molt4 cell lysate

Lysates/proteins at 10 µg per lane.

Predicted band size: 10 kDa



Immunohistochemistry (Formalin/PFA-fixed paraffin-embedded sections) - Anti-MLLT11 antibody [CHCR115] (ab109016)

Immunohistochemical analysis of MLLT11 expression in paraffin-embedded Human thymus tissue using ab109016 at 1/100 dilution.

Perform heat mediated antigen retrieval with citrate buffer pH 6 before commencing with IHC staining protocol.

Why choose a recombinant antibody?



Anti-MLLT11 antibody [CHCR115] (ab109016)

Please note: All products are "FOR RESEARCH USE ONLY. NOT FOR USE IN DIAGNOSTIC PROCEDURES"

Our Abpromise to you: Quality guaranteed and expert technical support

- Replacement or refund for products not performing as stated on the datasheet
- Valid for 12 months from date of delivery
- Response to your inquiry within 24 hours
- We provide support in Chinese, English, French, German, Japanese and Spanish
- Extensive multi-media technical resources to help you
- We investigate all quality concerns to ensure our products perform to the highest standards

If the product does not perform as described on this datasheet, we will offer a refund or replacement. For full details of the Abpromise, please visit <https://www.abcam.com/abpromise> or contact our technical team.

Terms and conditions

- Guarantee only valid for products bought direct from Abcam or one of our authorized distributors