


# Anti-MLX-interacting protein antibody ab77294

★★★★★ [1 Abreviews](#) [2 References](#) [2 Images](#)

### Overview

<b>Product name</b>	Anti-MLX-interacting protein antibody
<b>Description</b>	Rabbit polyclonal to MLX-interacting protein
<b>Host species</b>	Rabbit
<b>Tested applications</b>	<b>Suitable for:</b> WB, ICC/IF
<b>Species reactivity</b>	<b>Reacts with:</b> Human <b>Predicted to work with:</b> Mouse 
<b>Immunogen</b>	Synthetic peptide. This information is proprietary to Abcam and/or its suppliers.
<b>Positive control</b>	This antibody gave a positive signal in the following tissue lysates: Human heart; Human liver; Human kidney, as well as the following whole cell lysates: HeLa; HepG2; HEK293.
<b>General notes</b>	<p>The Life Science industry has been in the grips of a reproducibility crisis for a number of years. Abcam is leading the way in addressing this with our range of recombinant monoclonal antibodies and knockout edited cell lines for gold-standard validation. Please check that this product meets your needs before purchasing.</p> <p>If you have any questions, special requirements or concerns, please send us an inquiry and/or contact our Support team ahead of purchase. Recommended alternatives for this product can be found below, along with publications, customer reviews and Q&amp;As</p>

### Properties

<b>Form</b>	Liquid
<b>Storage instructions</b>	Shipped at 4°C. Store at +4°C short term (1-2 weeks). Upon delivery aliquot. Store at -20°C or -80°C. Avoid freeze / thaw cycle.
<b>Storage buffer</b>	<p>pH: 7.40</p> <p>Preservative: 0.02% Sodium azide</p> <p>Constituent: PBS</p> <p>Batches of this product that have a concentration &lt; 1mg/ml may have BSA added as a stabilising agent. If you would like information about the formulation of a specific lot, please contact our scientific support team who will be happy to help.</p>
<b>Purity</b>	Immunogen affinity purified
<b>Clonality</b>	Polyclonal

Isotype

IgG

## Applications

### The Abpromise guarantee

Our **Abpromise guarantee** covers the use of ab77294 in the following tested applications.

The application notes include recommended starting dilutions; optimal dilutions/concentrations should be determined by the end user.

Application	Abreviews	Notes
WB	★★★★★ (1)	Use a concentration of 1 µg/ml. Detects a band of approximately 101 kDa (predicted molecular weight: 101 kDa).
ICC/IF		Use a concentration of 5 µg/ml.

## Target

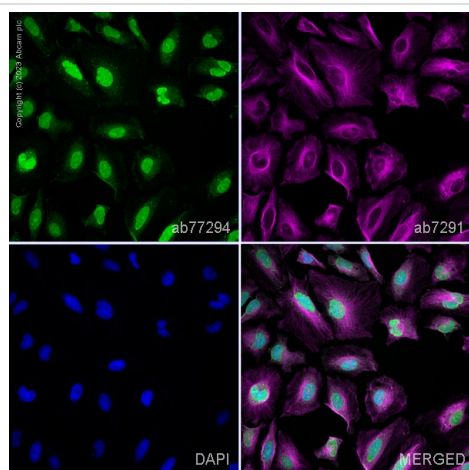
### Relevance

MLX-interacting protein is a basic helix-loop-helix leucine zipper transcription factor of the Myc/Max/Mad superfamily. This protein binds to DNA as a heterodimer with MLX, resulting in transcription activation. MLX-interacting protein plays a role in transcriptional activation of glycolytic target genes and is involved in glucose-responsive gene regulation.

### Cellular localization

Cytoplasmic, Mitochondrial outer membrane and Nuclear. Note: Predominantly cytoplasmic but shuttles between cytoplasm and nucleus when associated with MLX. Also associates with the outer mitochondrial membrane and may shuttle between the outer mitochondrial membrane and the nucleus.

## Images



Immunocytochemistry/ Immunofluorescence - Anti-MLX-interacting protein antibody (ab77294)

ab77294 staining MLX-interacting protein in HeLa cells. The cells were fixed with 4% paraformaldehyde (10 min), permeabilized with 0.1% PBS-Triton X-100 for 5 minutes and then blocked with 1% BSA/10% normal goat serum/0.3M glycine in 0.1% PBS-Tween for 1h. The cells were then incubated overnight at 4°C with ab77294 at 1 µg/ml and **ab7291**, Mouse monoclonal [DM1A] to alpha Tubulin - Loading Control. Cells were then incubated with **ab150081**, Goat polyclonal Secondary Antibody to Rabbit IgG - H&L (Alexa Fluor® 488), pre-adsorbed at 1/1000 dilution (shown in green) and **ab150120**, Goat polyclonal Secondary Antibody to Mouse IgG - H&L (Alexa Fluor® 594), pre-adsorbed at 1/1000 dilution (shown in pseudocolour magenta). Nuclear DNA was labelled with DAPI (shown in blue).

Image was acquired with a high-content analyser (Operetta CLS, Perkin Elmer) and a maximum intensity projection of confocal sections is shown.



Western blot - Anti-MLX-interacting protein antibody (ab77294)

**All lanes :** Anti-MLX-interacting protein antibody (ab77294) at 1 µg/ml

**Lane 1 :** Human heart tissue lysate - total protein ([ab29431](#))

**Lane 2 :** Human liver tissue lysate - total protein ([ab29889](#))

**Lane 3 :** Human kidney tissue lysate - total protein ([ab30203](#))

**Lane 4 :** HepG2 (Human hepatocellular liver carcinoma cell line) Whole Cell Lysate

**Lane 5 :** HEK293 (Human embryonic kidney cell line) Whole Cell Lysate

**Lane 6 :** HeLa (Human epithelial carcinoma cell line) Whole Cell Lysate

Lysates/proteins at 10 µg per lane.

### Secondary

**All lanes :** Goat polyclonal to Rabbit IgG - H&L - Pre-Adsorbed (HRP) at 1/3000 dilution

Developed using the ECL technique.

Performed under reducing conditions.

**Predicted band size:** 101 kDa

**Observed band size:** 101 kDa

**Additional bands at:** 50 kDa. We are unsure as to the identity of these extra bands.

**Exposure time:** 5 minutes

**Please note:** All products are "FOR RESEARCH USE ONLY. NOT FOR USE IN DIAGNOSTIC PROCEDURES"

### Our Abpromise to you: Quality guaranteed and expert technical support

- Replacement or refund for products not performing as stated on the datasheet
- Valid for 12 months from date of delivery
- Response to your inquiry within 24 hours
- We provide support in Chinese, English, French, German, Japanese and Spanish
- Extensive multi-media technical resources to help you
- We investigate all quality concerns to ensure our products perform to the highest standards

If the product does not perform as described on this datasheet, we will offer a refund or replacement. For full details of the Abpromise, please visit <https://www.abcam.com/abpromise> or contact our technical team.

## Terms and conditions

---

- Guarantee only valid for products bought direct from Abcam or one of our authorized distributors