


Product datasheet

Anti-MMP1 antibody ab137332

★★★★★ [12 Abreviews](#) [61 References](#) [2 Images](#)

Overview

Product name	Anti-MMP1 antibody
Description	Rabbit polyclonal to MMP1
Host species	Rabbit
Tested applications	Suitable for: ICC/IF, WB Unsuitable for: IHC-P
Species reactivity	Reacts with: Mouse, Human Predicted to work with: Rabbit, Cow, Pig 
Immunogen	Recombinant fragment corresponding to Human MMP1 aa 42-244. Database link: P03956
General notes	<p>The Life Science industry has been in the grips of a reproducibility crisis for a number of years. Abcam is leading the way in addressing this with our range of recombinant monoclonal antibodies and knockout edited cell lines for gold-standard validation. Please check that this product meets your needs before purchasing.</p> <p>If you have any questions, special requirements or concerns, please send us an inquiry and/or contact our Support team ahead of purchase. Recommended alternatives for this product can be found below, along with publications, customer reviews and Q&As</p>

Properties

Form	Liquid
Storage instructions	Shipped at 4°C. Upon delivery aliquot. Store at -20°C or -80°C. Avoid freeze / thaw cycle.
Storage buffer	pH: 7.00 Preservative: 0.025% Proclin 300 Constituents: 78% PBS, 1% BSA, 20% Glycerol (glycerin, glycerine)
Purity	Immunogen affinity purified
Clonality	Polyclonal
Isotype	IgG

Applications

The Abpromise guarantee

Our **Abpromise guarantee** covers the use of ab137332 in the following tested applications.

The application notes include recommended starting dilutions; optimal dilutions/concentrations should be determined by the end user.

Application	Abreviews	Notes
ICC/IF	★★★★★ (1)	Use at an assay dependent concentration. PubMed: 23902766
WB	★★★★★ (1)	1/500 - 1/3000. Predicted molecular weight: 54 kDa. Blocking in 5% non-fat milk in TBST for 60 minutes at room temperature.

Application notes

Is unsuitable for IHC-P.

Target

Function

Cleaves collagens of types I, II, and III at one site in the helical domain. Also cleaves collagens of types VII and X. In case of HIV infection, interacts and cleaves the secreted viral Tat protein, leading to a decrease in neuronal Tat's mediated neurotoxicity.

Sequence similarities

Belongs to the peptidase M10A family.
Contains 4 hemopexin-like domains.

Domain

There are two distinct domains in this protein; the catalytic N-terminal, and the C-terminal which is involved in substrate specificity and in binding TIMP (tissue inhibitor of metalloproteinases). The conserved cysteine present in the cysteine-switch motif binds the catalytic zinc ion, thus inhibiting the enzyme. The dissociation of the cysteine from the zinc ion upon the activation-peptide release activates the enzyme.

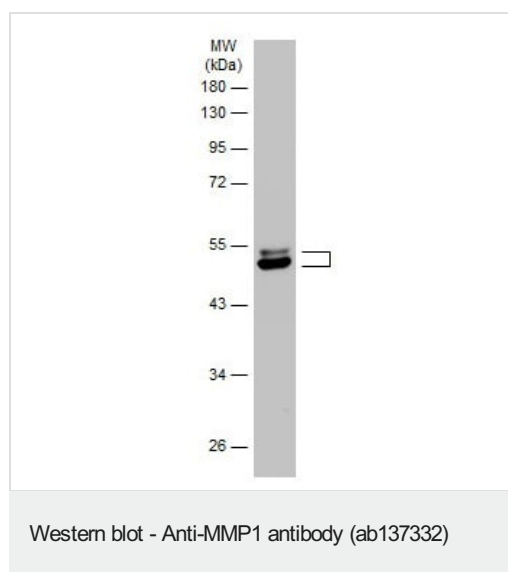
Post-translational modifications

Undergoes autolytic cleavage to two major forms (22 kDa and 27 kDa). A minor form (25 kDa) is the glycosylated form of the 22 kDa form. The 27 kDa form has no activity while the 22/25 kDa form can act as activator for collagenase.

Cellular localization

Secreted > extracellular space > extracellular matrix.

Images



Anti-MMP1 antibody (ab137332) at 1/2500 dilution + HUVEC (human umbilical vein endothelial cell line) whole cell extract at 30 µg

Secondary

HRP-conjugated anti-rabbit IgG at 1/10000 dilution

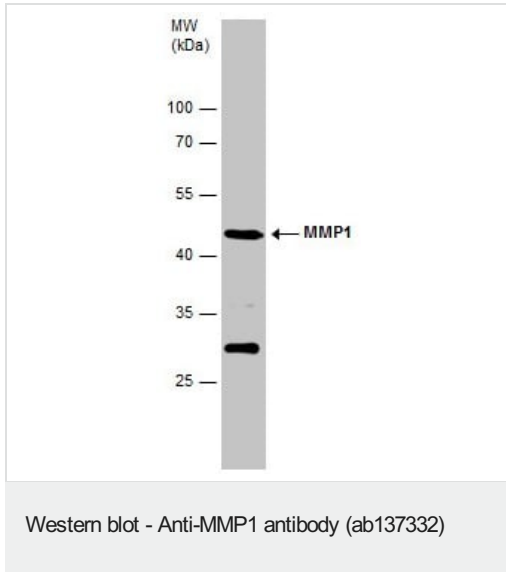
Predicted band size: 54 kDa

10% SDS gel

Running condition: 80V, 15min; 140V, 40 min

Primary antibody incubation: 4°C overnight

Washing condition: 5 mL TBST, 4 x 5 minutes



Anti-MMP1 antibody (ab137332) at 1/1000 dilution + Raji (Human Burkitt's lymphoma cell line) whole cell lysate at 30 µg

Predicted band size: 54 kDa

Please note: All products are "FOR RESEARCH USE ONLY. NOT FOR USE IN DIAGNOSTIC PROCEDURES"

Our Abpromise to you: Quality guaranteed and expert technical support

- Replacement or refund for products not performing as stated on the datasheet
- Valid for 12 months from date of delivery
- Response to your inquiry within 24 hours
- We provide support in Chinese, English, French, German, Japanese and Spanish
- Extensive multi-media technical resources to help you
- We investigate all quality concerns to ensure our products perform to the highest standards

If the product does not perform as described on this datasheet, we will offer a refund or replacement. For full details of the Abpromise, please visit <https://www.abcam.com/abpromise> or contact our technical team.

Terms and conditions

- Guarantee only valid for products bought direct from Abcam or one of our authorized distributors