

Product datasheet

Anti-MMS22L (C6ORF167) antibody [EPR13654] ab181047

Recombinant RabMAb

★★★★★ [2 Abreviews](#) [4 References](#) [4 Images](#)

Overview

Product name	Anti-MMS22L (C6ORF167) antibody [EPR13654]
Description	Rabbit monoclonal [EPR13654] to MMS22L (C6ORF167)
Host species	Rabbit
Tested applications	Suitable for: Flow Cyt (Intra), WB, IP
Species reactivity	Reacts with: Mouse, Rat, Human
Immunogen	Recombinant fragment. This information is proprietary to Abcam and/or its suppliers.
Positive control	HeLa, K562 and HCT-116 whole cell lysate; K562 cells.
General notes	<p>This product is a recombinant monoclonal antibody, which offers several advantages including:</p> <ul style="list-style-type: none"> - High batch-to-batch consistency and reproducibility - Improved sensitivity and specificity - Long-term security of supply - Animal-free production <p>For more information see here.</p> <p>Our RabMAb[®] technology is a patented hybridoma-based technology for making rabbit monoclonal antibodies. For details on our patents, please refer to RabMAb[®] patents.</p>

Properties

Form	Liquid
Storage instructions	Shipped at 4°C. Store at +4°C short term (1-2 weeks). Upon delivery aliquot. Store at -20°C long term. Avoid freeze / thaw cycle.
Storage buffer	Preservative: 0.01% Sodium azide Constituents: 40% Glycerol, 59% PBS, 0.05% BSA
Purity	Protein A purified
Clonality	Monoclonal
Clone number	EPR13654
Isotype	IgG

Applications

The Abpromise guarantee

Our **Abpromise guarantee** covers the use of ab181047 in the following tested applications.

The application notes include recommended starting dilutions; optimal dilutions/concentrations should be determined by the end user.

Application	Abreviews	Notes
Flow Cyt (Intra)		1/20. ab172730 - Rabbit monoclonal IgG, is suitable for use as an isotype control with this antibody.
WB		1/1000 - 1/2000. Detects a band of approximately 130 kDa (predicted molecular weight: 142 kDa).
IP		1/20.

Target

Function

Component of the MMS22L-TONSL complex, a complex that stimulates the recombination-dependent repair of stalled or collapsed replication forks. The MMS22L-TONSL complex is required to maintain genome integrity during DNA replication by promoting homologous recombination-mediated repair of replication fork-associated double-strand breaks. It may act by mediating the assembly of RAD51 filaments on ssDNA.

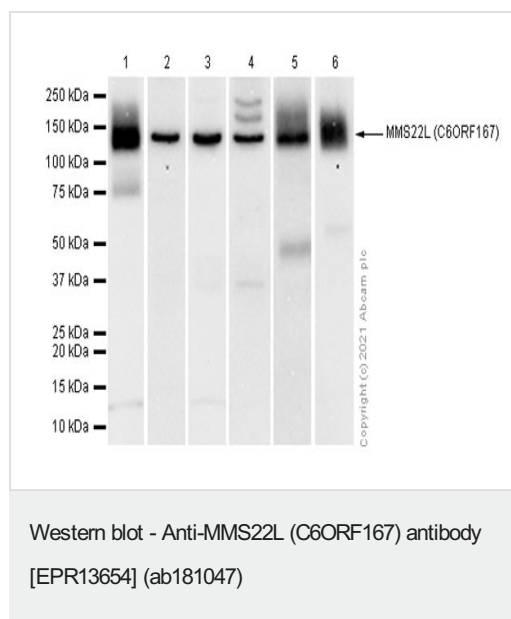
Sequence similarities

Belongs to the MMS22 family. MMS22L subfamily.

Cellular localization

Nucleus. Localizes to DNA damage sites, accumulates at stressed replication forks.

Images



All lanes : Anti-MMS22L (C6ORF167) antibody [EPR13654] (ab181047) at 1/1000 dilution (Purified)

Lane 1 : HeLa (Human cervix adenocarcinoma epithelial cell) whole cell lysate

Lane 2 : A549 (Human lung carcinoma epithelial cell) whole cell lysate

Lane 3 : LLC1 (Mouse lung carcinoma) whole cell lysate

Lane 4 : Mouse testis lysate

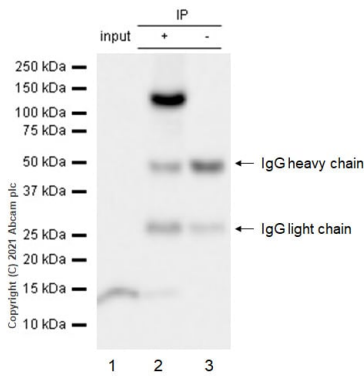
Lane 5 : Mouse spleen lysate

Lane 6 : PC-12 (Rat adrenal gland pheochromocytoma) whole cell lysate

Secondary

All lanes : Goat Anti-Rabbit IgG H&L (HRP) (**ab97051**) at 1/20000 dilution

Predicted band size: 142 kDa



Immunoprecipitation - Anti-MMS22L (C6ORF167)
antibody [EPR13654] (ab181047)

Purified ab181047 at 1:20 dilution (0.5µg) immunoprecipitating MMS22L (C6ORF167) in HeLa whole cell lysate.

Lane 1 (input): HeLa (Human cervix adenocarcinoma epithelial cell) whole cell lysate 10 µg.

Lane 2 (+): ab181047 + HeLa whole cell lysate.

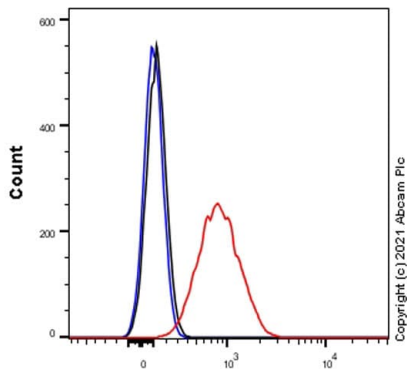
Lane 3 (-): Rabbit monoclonal IgG (**ab172730**) instead of ab181047 in HeLa whole cell lysate.

VeriBlot for IP Detection Reagent (HRP)(**ab131366**) (1:5000 dilution) was used for Western blotting.

Blocking Buffer and concentration: 5% NFDm/TBST.

Diluting buffer and concentration: 5% NFDm/TBST.

Observed band size: kDa



MMS22L (C6ORF167) – Alexa Fluor®488 (530/30BP)

Flow Cytometry (Intracellular) - Anti-MMS22L
(C6ORF167) antibody [EPR13654] (ab181047)

Flow Cytometry analysis of HeLa (Human cervix adenocarcinoma epithelial cell) cells labelling MMS22L (C6ORF167) with Purified ab181047 at 1:20 dilution (5 µg/ml) (Red). Cells were fixed with 4% Paraformaldehyde and permeabilised with 90% Methanol. A Goat anti rabbit IgG (Alexa Fluor® 488, **ab150081**) secondary antibody was used at 1:2000. Isotype control - Rabbit monoclonal IgG (Black). Unlabelled control - Cell without incubation with primary antibody and secondary antibody (Blue).

Why choose a recombinant antibody?



Research with confidence
Consistent and reproducible results



Long-term and scalable supply
Recombinant technology



Success from the first experiment
Confirmed specificity



Ethical standards compliant
Animal-free production

Anti-MMS22L (C6ORF167) antibody [EPR13654]
(ab181047)

Please note: All products are "FOR RESEARCH USE ONLY. NOT FOR USE IN DIAGNOSTIC PROCEDURES"

Our Abpromise to you: Quality guaranteed and expert technical support

- Replacement or refund for products not performing as stated on the datasheet
- Valid for 12 months from date of delivery
- Response to your inquiry within 24 hours
- We provide support in Chinese, English, French, German, Japanese and Spanish
- Extensive multi-media technical resources to help you
- We investigate all quality concerns to ensure our products perform to the highest standards

If the product does not perform as described on this datasheet, we will offer a refund or replacement. For full details of the Abpromise, please visit <https://www.abcam.com/abpromise> or contact our technical team.

Terms and conditions

- Guarantee only valid for products bought direct from Abcam or one of our authorized distributors