

## Product datasheet

# Anti-MMS22L (C6ORF167) antibody [EPR13654] - BSA and Azide free ab250307

Recombinant RabMAb

[4 Images](#)

### Overview

<b>Product name</b>	Anti-MMS22L (C6ORF167) antibody [EPR13654] - BSA and Azide free
<b>Description</b>	Rabbit monoclonal [EPR13654] to MMS22L (C6ORF167) - BSA and Azide free
<b>Host species</b>	Rabbit
<b>Tested applications</b>	<b>Suitable for:</b> Flow Cyt (Intra), IP, WB
<b>Species reactivity</b>	<b>Reacts with:</b> Mouse, Rat, Human
<b>Immunogen</b>	Recombinant fragment. This information is proprietary to Abcam and/or its suppliers.
<b>General notes</b>	<p>ab250307 is the carrier-free version of <a href="#">ab181047</a>.</p> <p>Our <b>carrier-free</b> antibodies are typically supplied in a PBS-only formulation, purified and free of BSA, sodium azide and glycerol. The carrier-free buffer and high concentration allow for increased conjugation efficiency.</p> <p>This conjugation-ready format is designed for use with fluorochromes, metal isotopes, oligonucleotides, and enzymes, which makes them ideal for antibody labelling, functional and cell-based assays, flow-based assays (e.g. mass cytometry) and Multiplex Imaging applications.</p> <p>Use our <b>conjugation kits</b> for antibody conjugates that are ready-to-use in as little as 20 minutes with &lt;1 minute hands-on-time and 100% antibody recovery: available for fluorescent dyes, HRP, biotin and gold.</p> <p>This product is compatible with the Maxpar<sup>®</sup> Antibody Labeling Kit from Fluidigm, without the need for antibody preparation. Maxpar<sup>®</sup> is a trademark of Fluidigm Canada Inc.</p> <p>This product is a recombinant monoclonal antibody, which offers several advantages including:</p> <ul style="list-style-type: none"><li>- High batch-to-batch consistency and reproducibility</li><li>- Improved sensitivity and specificity</li><li>- Long-term security of supply</li><li>- Animal-free production</li></ul> <p>For more information <a href="#">see here</a>.</p> <p>Our RabMAb<sup>®</sup> technology is a patented hybridoma-based technology for making rabbit monoclonal antibodies. For details on our patents, please refer to <a href="#">RabMAb<sup>®</sup> patents</a>.</p>

### Properties

<b>Form</b>	Liquid
<b>Storage instructions</b>	Shipped at 4°C. Store at +4°C. Do Not Freeze.
<b>Storage buffer</b>	pH: 7.2 Constituent: PBS
<b>Carrier free</b>	Yes
<b>Purity</b>	Protein A purified
<b>Clonality</b>	Monoclonal
<b>Clone number</b>	EPR13654
<b>Isotype</b>	IgG

## Applications

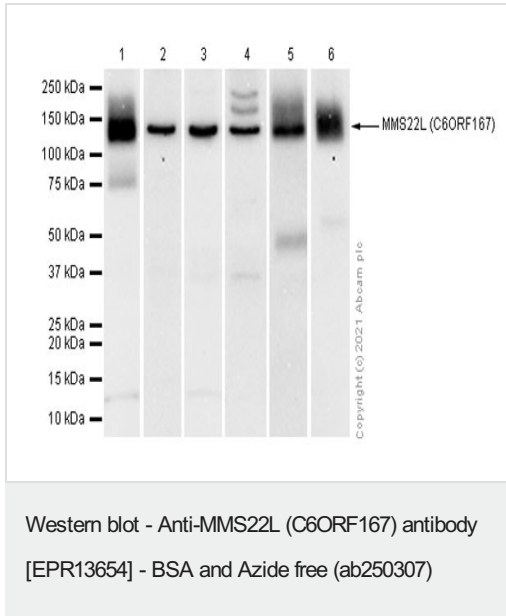
**The Abpromise guarantee** Our **Abpromise guarantee** covers the use of ab250307 in the following tested applications. The application notes include recommended starting dilutions; optimal dilutions/concentrations should be determined by the end user.

Application	Abreviews	Notes
<b>Flow Cyt (Intra)</b>		Use at an assay dependent concentration.
<b>IP</b>		Use at an assay dependent concentration.
<b>WB</b>		Use at an assay dependent concentration. Detects a band of approximately 130 kDa (predicted molecular weight: 142 kDa).

## Target

<b>Function</b>	Component of the MMS22L-TONSL complex, a complex that stimulates the recombination-dependent repair of stalled or collapsed replication forks. The MMS22L-TONSL complex is required to maintain genome integrity during DNA replication by promoting homologous recombination-mediated repair of replication fork-associated double-strand breaks. It may act by mediating the assembly of RAD51 filaments on ssDNA.
<b>Sequence similarities</b>	Belongs to the MMS22 family. MMS22L subfamily.
<b>Cellular localization</b>	Nucleus. Localizes to DNA damage sites, accumulates at stressed replication forks.

## Images



**All lanes** : Anti-MMS22L (C6ORF167) antibody [EPR13654] (**ab181047**) at 1/1000 dilution (Purified)

**Lane 1** : HeLa (Human cervix adenocarcinoma epithelial cell) whole cell lysate

**Lane 2** : A549 (Human lung carcinoma epithelial cell) whole cell lysate

**Lane 3** : LLC1 (Mouse lung carcinoma ) whole cell lysate

**Lane 4** : Mouse testis lysate

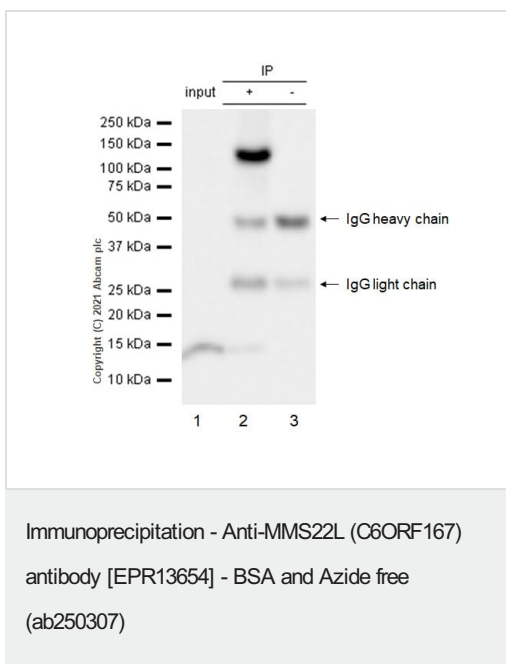
**Lane 5** : Mouse spleen lysate

**Lane 6** : PC-12 (Rat adrenal gland pheochromocytoma ) whole cell lysate

### Secondary

**All lanes** : Goat Anti-Rabbit IgG H&L (HRP) (**ab97051**) at 1/20000 dilution

**Predicted band size:** 142 kDa



This data was developed using ab250307, the same antibody clone in a different buffer formulation.

Purified ab250307 at 1:20 dilution (0.5µg) immunoprecipitating MMS22L (C6ORF167) in HeLa whole cell lysate.

Lane 1 (input): HeLa (Human cervix adenocarcinoma epithelial cell) whole cell lysate 10 µg

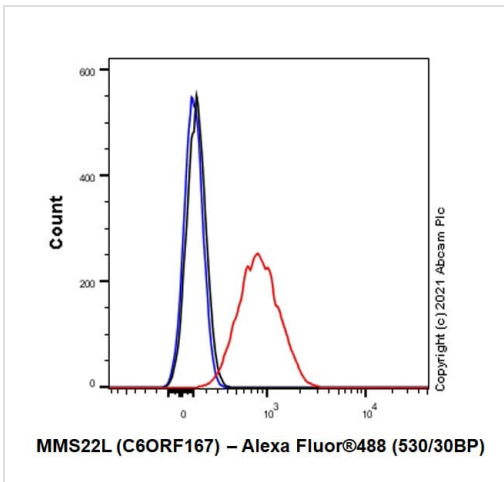
Lane 2 (+): ab250307 + HeLa whole cell lysate.

Lane 3 (-): Rabbit monoclonal IgG (**ab172730**) instead of **ab181047** in HeLa whole cell lysate.

VeriBlot for IP Detection Reagent (HRP)(**ab131366**) (1:5000 dilution) was used for Western blotting.

Blocking Buffer and concentration: 5% NFD/MTBST.

Diluting buffer and concentration: 5% NFD/MTBST.



This data was developed using ab250307, the same antibody clone in a different buffer formulation.

Flow Cytometry analysis of HeLa (Human cervix adenocarcinoma epithelial cell) cells labelling MMS22L (C6ORF167) with Purified ab250307 at 1:20 dilution (5 µg/ml) (Red). Cells were fixed with 4% Paraformaldehyde and permeabilised with 90% Methanol. A Goat anti rabbit IgG (Alexa Fluor® 488, **ab150081**) secondary antibody was used at 1:2000. Isotype control - Rabbit monoclonal IgG (Black). Unlabelled control - Cell without incubation with primary antibody and secondary antibody (Blue).

Flow Cytometry (Intracellular) - Anti-MMS22L (C6ORF167) antibody [EPR13654] - BSA and Azide free (ab250307)

**Why choose a recombinant antibody?**

<p><b>Research with confidence</b> Consistent and reproducible results</p>	<p><b>Long-term and scalable supply</b> Recombinant technology</p>
<p><b>Success from the first experiment</b> Confirmed specificity</p>	<p><b>Ethical standards compliant</b> Animal-free production</p>

Anti-MMS22L (C6ORF167) antibody [EPR13654] - BSA and Azide free (ab250307)

**Please note:** All products are "FOR RESEARCH USE ONLY. NOT FOR USE IN DIAGNOSTIC PROCEDURES"

**Our Abpromise to you: Quality guaranteed and expert technical support**

- Replacement or refund for products not performing as stated on the datasheet
- Valid for 12 months from date of delivery
- Response to your inquiry within 24 hours
- We provide support in Chinese, English, French, German, Japanese and Spanish
- Extensive multi-media technical resources to help you
- We investigate all quality concerns to ensure our products perform to the highest standards

If the product does not perform as described on this datasheet, we will offer a refund or replacement. For full details of the Abpromise, please visit <https://www.abcam.com/abpromise> or contact our technical team.

### **Terms and conditions**

---

- Guarantee only valid for products bought direct from Abcam or one of our authorized distributors