


## Product datasheet

# Anti-Moesin (phospho T558) antibody [EPR2371(2)] ab177943

Recombinant RabMAb

★★★★★ 1 Abreviews 6 References 4 Images

### Overview

Product name	Anti-Moesin (phospho T558) antibody [EPR2371(2)]
Description	Rabbit monoclonal [EPR2371(2)] to Moesin (phospho T558)
Host species	Rabbit
Specificity	This antibody detects Moesin phosphorylated at threonine 558, Ezrin phosphorylated at threonine 567 and Radixin phosphorylated at threonine 564.
Tested applications	<b>Suitable for:</b> WB, IHC-P <b>Unsuitable for:</b> Flow Cyt, ICC/IF or IP
Species reactivity	<b>Reacts with:</b> Human <b>Predicted to work with:</b> Mouse, Rat 
Immunogen	Synthetic peptide. This information is proprietary to Abcam and/or its suppliers.
Positive control	Calyculin treated 293T cell lysate; Human gastric adenocarcinoma and prostate tissues.
General notes	This product is a recombinant monoclonal antibody, which offers several advantages including: <ul style="list-style-type: none"> <li>- High batch-to-batch consistency and reproducibility</li> <li>- Improved sensitivity and specificity</li> <li>- Long-term security of supply</li> <li>- Animal-free production</li> </ul> For more information <a href="#">see here</a> . Our RabMAb <sup>®</sup> technology is a patented hybridoma-based technology for making rabbit monoclonal antibodies. For details on our patents, please refer to <a href="#">RabMAb<sup>®</sup> patents</a> .

### Properties

Form	Liquid
Storage instructions	Shipped at 4°C. Store at +4°C short term (1-2 weeks). Upon delivery aliquot. Store at -20°C long term. Avoid freeze / thaw cycle.
Storage buffer	pH: 7.20 Preservative: 0.01% Sodium azide Constituents: 59% PBS, 40% Glycerol (glycerin, glycerine), 0.5% BSA

<b>Purity</b>	Protein A purified
<b>Clonality</b>	Monoclonal
<b>Clone number</b>	EPR2371(2)
<b>Isotype</b>	IgG

## Applications

**The Abpromise guarantee** Our **Abpromise guarantee** covers the use of ab177943 in the following tested applications.

The application notes include recommended starting dilutions; optimal dilutions/concentrations should be determined by the end user.

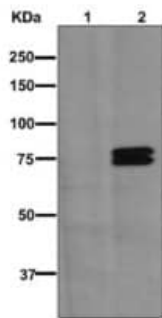
Application	Abreviews	Notes
<b>WB</b>	★★★★★ (1)	1/1000 - 1/5000. Detects a band of approximately 75, 80 kDa (predicted molecular weight: 68 kDa).
<b>IHC-P</b>		1/50 - 1/100. Perform heat mediated antigen retrieval before commencing with IHC staining protocol.

**Application notes** Is unsuitable for Flow Cyt, ICC/IF or IP.

## Target

<b>Function</b>	Probably involved in connections of major cytoskeletal structures to the plasma membrane.
<b>Tissue specificity</b>	In all tissues and cultured cells studied.
<b>Sequence similarities</b>	Contains 1 FERM domain.
<b>Post-translational modifications</b>	Phosphorylation on Thr-558 is crucial for the formation of microvilli-like structures.
<b>Cellular localization</b>	Cell membrane. Cytoplasm > cytoskeleton. Apical cell membrane. Cell projection > microvillus membrane. Phosphorylated form is enriched in microvilli-like structures at apical membrane (By similarity). Increased cell membrane localization of both phosphorylated and non-phosphorylated forms seen after thrombin treatment.

## Images



Western blot - Anti-Moesin (phospho T558) antibody [EPR2371(2)] (ab177943)

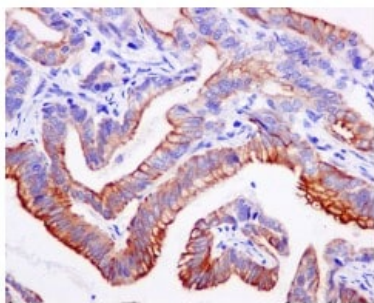
**All lanes :** Anti-Moesin (phospho T558) antibody [EPR2371(2)] (ab177943) at 1/1000 dilution

**Lane 1 :** 293T (Human embryonic kidney epithelial cell) cell lysate

**Lane 2 :** 293T cell lysate, treated with Calyculin

Lysates/proteins at 10 µg per lane.

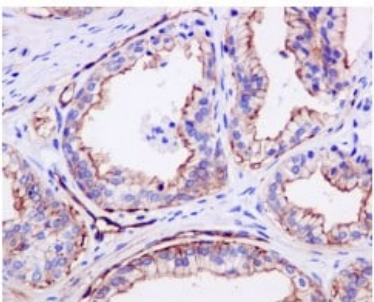
**Predicted band size:** 68 kDa



Immunohistochemistry (Formalin/PFA-fixed paraffin-embedded sections) - Anti-Moesin (phospho T558) antibody [EPR2371(2)] (ab177943)

Immunohistochemical analysis of paraffin-embedded Human gastric adenocarcinoma tissue labeling Moesin with ab177943 at 1/50 dilution.

Perform heat mediated antigen retrieval before commencing with IHC staining protocol.



Immunohistochemistry (Formalin/PFA-fixed paraffin-embedded sections) - Anti-Moesin (phospho T558) antibody [EPR2371(2)] (ab177943)

Immunohistochemical analysis of paraffin-embedded Human prostate tissue labeling Moesin with ab177943 at 1/50 dilution.

Perform heat mediated antigen retrieval before commencing with IHC staining protocol.

### Why choose a recombinant antibody?



**Research with confidence**  
Consistent and reproducible results



**Long-term and scalable supply**  
Recombinant technology



**Success from the first experiment**  
Confirmed specificity



**Ethical standards compliant**  
Animal-free production

Anti-Moesin (phospho T558) antibody [EPR2371(2)]  
(ab177943)

**Please note:** All products are "FOR RESEARCH USE ONLY. NOT FOR USE IN DIAGNOSTIC PROCEDURES"

### Our Abpromise to you: Quality guaranteed and expert technical support

---

- Replacement or refund for products not performing as stated on the datasheet
- Valid for 12 months from date of delivery
- Response to your inquiry within 24 hours
- We provide support in Chinese, English, French, German, Japanese and Spanish
- Extensive multi-media technical resources to help you
- We investigate all quality concerns to ensure our products perform to the highest standards

If the product does not perform as described on this datasheet, we will offer a refund or replacement. For full details of the Abpromise, please visit <https://www.abcam.com/abpromise> or contact our technical team.

### Terms and conditions

---

- Guarantee only valid for products bought direct from Abcam or one of our authorized distributors