

Product datasheet

Anti-mono and dimethyl Arginine antibody [7E6] ab412

★★★★★ [2 Abreviews](#) [51 References](#) [2 Images](#)

Overview

Product name	Anti-mono and dimethyl Arginine antibody [7E6]
Description	Mouse monoclonal [7E6] to mono and dimethyl Arginine
Host species	Mouse
Tested applications	Suitable for: IP, ChIP Unsuitable for: WB
Species reactivity	Reacts with: Species independent
Immunogen	Asymmetrical N ^G /N ^G -dimethyl arginine
Positive control	Methylated histones are an option
General notes	<p>This antibody will be of central importance in analysing the methylation status of chromatin and transcription factors. Since it recognises both dimethyl and monomethyl arginine it can be used in parallel with ab413 (detects dimethyl arginine only) and ab414 (detects monomethyl arginine only) to monitor the exact modification status. A tissue culture supernatant version is available as ab5394.</p> <p>The Life Science industry has been in the grips of a reproducibility crisis for a number of years. Abcam is leading the way in addressing this with our range of recombinant monoclonal antibodies and knockout edited cell lines for gold-standard validation. Please check that this product meets your needs before purchasing.</p> <p>If you have any questions, special requirements or concerns, please send us an inquiry and/or contact our Support team ahead of purchase. Recommended alternatives for this product can be found below, along with publications, customer reviews and Q&As</p>

Properties

Form	Liquid
Storage instructions	Shipped at 4°C. Store at +4°C short term (1-2 weeks). Upon delivery aliquot. Store at -20°C or -80°C. Avoid freeze / thaw cycle.
Storage buffer	Constituents: 0.75% Glycine, 1.21% Tris, 2% Sucrose
Purity	Protein A purified
Primary antibody notes	This antibody will be of central importance in analysing the methylation status of chromatin and

transcription factors. Since it recognises both dimethyl and monomethyl arginine it can be used in parallel with **ab413** (detects dimethyl arginine only) and **ab414** (detects monomethyl arginine only) to monitor the exact modification status. A tissue culture supernatant version is available as **ab5394**.

Clonality	Monoclonal
Clone number	7E6
Myeloma	unknown
Isotype	IgG1
Light chain type	kappa

Applications

The Abpromise guarantee Our **Abpromise guarantee** covers the use of ab412 in the following tested applications.

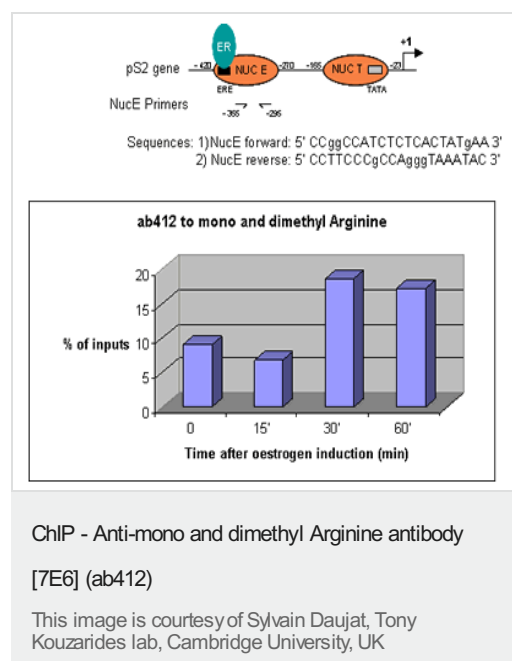
The application notes include recommended starting dilutions; optimal dilutions/concentrations should be determined by the end user.

Application	Abreviews	Notes
IP	★★★★★ (1)	Use at an assay dependent concentration.
ChIP		Use 3µl for 10 ⁶ cells.

Application notes Is unsuitable for WB.

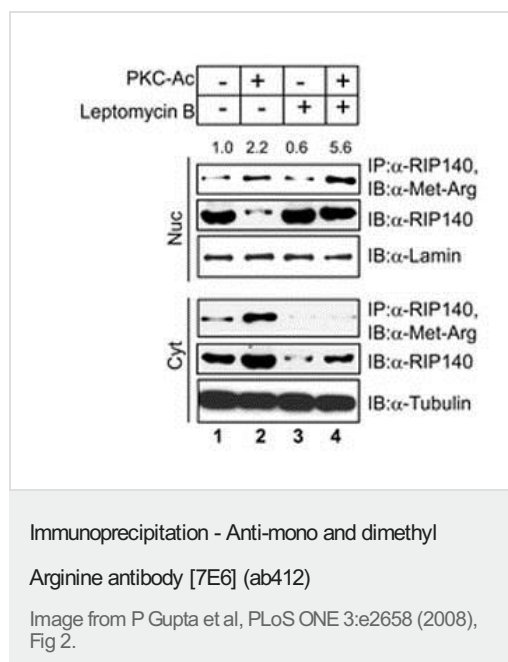
Target

Images



Sonicated Chromatin prepared from untreated or 17beta-estradiol (E2) treated MCF7 cells was subjected to the ChIP procedure (see protocol) with ab412 to mono and dimethyl Arginine.

Immunoprecipitated chromatin was analysed in the proximal region of the estrogen-responsive pS2 promoter (as shown above) and quantified by real-time PCR (values are % of inputs). The primers are designed to follow the nucleosome E (including the Estrogen Responsive Element ERE). 3 µl of ab412 and 4x10⁶ cells were used in each ChIP experiment.



Cell extracts were suspended in 250 µl of immunoprecipitation buffer (150 mM NaCl, 50 mM Tris-HCl (pH 8.0), 1 mM EDTA, 0.2% (v/v) Nonidet P40, 2 mM PMSF, 0.1% (w/v) SDS and a protease-inhibitor cocktail. Protein extracts (200 µg) were incubated with antibodies to RIP140, 14-3-3, or PRMT1 overnight at 4°C, and precipitated with protein G-agarose beads for 1–2 hours. ab412 was then used (amongst other antibodies) in Western Blot. Reduced protein inputs were used for ectopic expression of RIP140 to avoid saturation.

Please note: All products are "FOR RESEARCH USE ONLY. NOT FOR USE IN DIAGNOSTIC PROCEDURES"

Our Abpromise to you: Quality guaranteed and expert technical support

- Replacement or refund for products not performing as stated on the datasheet
- Valid for 12 months from date of delivery
- Response to your inquiry within 24 hours
- We provide support in Chinese, English, French, German, Japanese and Spanish
- Extensive multi-media technical resources to help you
- We investigate all quality concerns to ensure our products perform to the highest standards

If the product does not perform as described on this datasheet, we will offer a refund or replacement. For full details of the Abpromise, please visit <https://www.abcam.com/abpromise> or contact our technical team.

Terms and conditions

- Guarantee only valid for products bought direct from Abcam or one of our authorized distributors