

Product datasheet

Anti-Mouse IgM antibody [RM109] ab190369

Recombinant

[3 References](#) [3 Images](#)

Overview

Product name	Anti-Mouse IgM antibody [RM109]
Description	Rabbit monoclonal [RM109] to Mouse IgM
Host species	Rabbit
Specificity	This antibody reacts to mouse IgM. No cross reactivity with mouse IgG1, IgG2a, IgG2b, IgG3, IgA, IgE, human IgG, rat IgG, or goat IgG. The Fc region of RM109 has been engineered to eliminate the binding of Fc receptor.
Tested applications	Suitable for: ELISA, ICC, IHC-P, IP, Flow Cyt
Species reactivity	Reacts with: Mouse, Recombinant fragment
Immunogen	Full length protein corresponding to Mouse IgM.

Properties

Form	Liquid
Storage instructions	Shipped at 4°C. Store at +4°C short term (1-2 weeks). Upon delivery aliquot. Store at -20°C long term. Avoid freeze / thaw cycle.
Storage buffer	Preservative: 0.09% Sodium azide Constituents: 48% PBS, 1% BSA, 50% Glycerol
Purity	Protein A purified
Purification notes	ab190369 was purified from an animal origin-free and protein-free culture supernatant.
Clonality	Monoclonal
Clone number	RM109
Isotype	IgG

Applications

The Abpromise guarantee Our **Abpromise guarantee** covers the use of ab190369 in the following tested applications. The application notes include recommended starting dilutions; optimal dilutions/concentrations should be determined by the end user.

Application	Abreviews	Notes
ELISA		Use a concentration of 0.005 - 0.2 µg/ml.
ICC		Use at an assay dependent concentration.
IHC-P		Use at an assay dependent concentration.
IP		Use at an assay dependent concentration.
Flow Cyt		Use at an assay dependent concentration. ab172730 - Rabbit monoclonal IgG, is suitable for use as an isotype control with this antibody.

Target

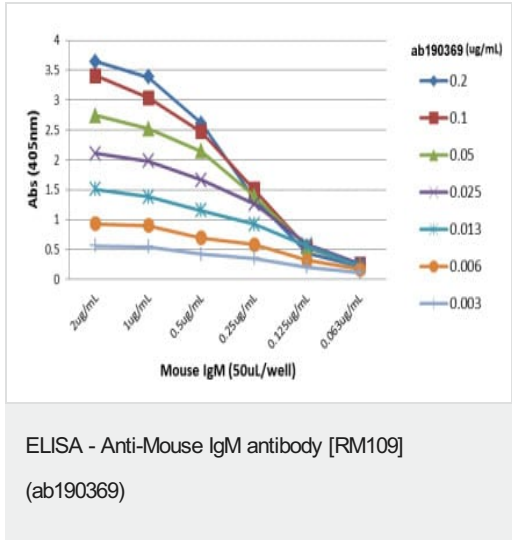
Relevance

lgM normally constitutes about 10% of serum immunoglobulins. IgM antibody is prominent in early immune responses to most antigens and predominates in certain antibody responses such as 'natural' blood group antibodies. IgM (with IgD) is the major immunoglobulin expressed on the surface of B cells. The gene for the mu constant region contains four domains separated by short intervening sequences. There are two isoforms.

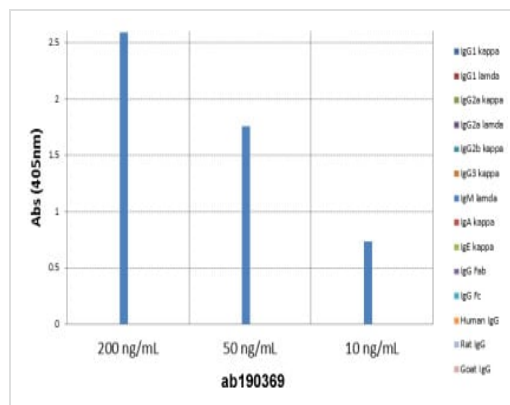
Cellular localization

Plasma membrane and Secreted

Images



A titer ELISA of mouse IgM. The plate was coated with different amounts of mouse IgM. A serial dilution of ab190369 was used as the primary antibody. An alkaline phosphatase conjugated anti-rabbit IgG as the secondary antibody.



ELISA of mouse immunoglobulins shows ab190369 reacted to mouse IgM; no cross reactivity with IgG1, IgG2a, IgG2b, IgG3, IgA, IgE, human IgG, rat IgG, or goat IgG. The plate was coated with 50 ng/well of different immunoglobulins. 200 ng/mL, 50 ng/mL, or 10 ng/mL of ab190369 was used as the primary antibody. An alkaline phosphatase conjugated anti-rabbit IgG as the secondary antibody.

ELISA - Anti-Mouse IgM antibody [RM109]
(ab190369)

Why choose a recombinant antibody?

Research with confidence
Consistent and reproducible results

Long-term and scalable supply
Recombinant technology

Success from the first experiment
Confirmed specificity

Ethical standards compliant
Animal-free production

Anti-Mouse IgM antibody [RM109] (ab190369)

Please note: All products are "FOR RESEARCH USE ONLY. NOT FOR USE IN DIAGNOSTIC PROCEDURES"

Our Abpromise to you: Quality guaranteed and expert technical support

- Replacement or refund for products not performing as stated on the datasheet
- Valid for 12 months from date of delivery
- Response to your inquiry within 24 hours
- We provide support in Chinese, English, French, German, Japanese and Spanish
- Extensive multi-media technical resources to help you

- We investigate all quality concerns to ensure our products perform to the highest standards

If the product does not perform as described on this datasheet, we will offer a refund or replacement. For full details of the Abpromise, please visit <https://www.abcam.com/abpromise> or contact our technical team.

Terms and conditions

- Guarantee only valid for products bought direct from Abcam or one of our authorized distributors