


Product datasheet

Anti-MPC1 antibody ab74871

★☆☆☆☆ [1 Abreviews](#) [6 References](#) [3 Images](#)

Overview

Product name	Anti-MPC1 antibody
Description	Rabbit polyclonal to MPC1
Host species	Rabbit
Tested applications	Suitable for: WB, IHC-P, ICC/IF
Species reactivity	Reacts with: Human Predicted to work with: Mouse, Rat 
Immunogen	Synthetic peptide corresponding to Human MPC1 (internal sequence).
Positive control	WB: extracts from COLO and HeLa cells IHC-P: human heart tissue ICC/IF: A549 cells
General notes	<p>The Life Science industry has been in the grips of a reproducibility crisis for a number of years. Abcam is leading the way in addressing this with our range of recombinant monoclonal antibodies and knockout edited cell lines for gold-standard validation. Please check that this product meets your needs before purchasing.</p> <p>If you have any questions, special requirements or concerns, please send us an inquiry and/or contact our Support team ahead of purchase. Recommended alternatives for this product can be found below, along with publications, customer reviews and Q&As</p>

Properties

Form	Liquid
Storage instructions	Shipped at 4°C. Upon delivery aliquot and store at -20°C. Avoid freeze / thaw cycles.
Storage buffer	<p>pH: 7.40</p> <p>Preservative: 0.02% Sodium azide</p> <p>Constituents: 50% Glycerol (glycerin, glycerine), 0.87% Sodium chloride, PBS</p>
Purity	Without Mg ²⁺ and Ca ²⁺
Clonality	Immunogen affinity purified
Isotype	Polyclonal
	IgG

Applications

The Abpromise guarantee

Our **Abpromise guarantee** covers the use of ab74871 in the following tested applications.

The application notes include recommended starting dilutions; optimal dilutions/concentrations should be determined by the end user.

Application	Abreviews	Notes
WB		1/500 - 1/1000. Predicted molecular weight: 12 kDa.
IHC-P		Use at an assay dependent concentration.
ICC/IF		1/500 - 1/1000.

Target

Function

Mediates the uptake of pyruvate into mitochondria.

Involvement in disease

Mitochondrial pyruvate carrier deficiency

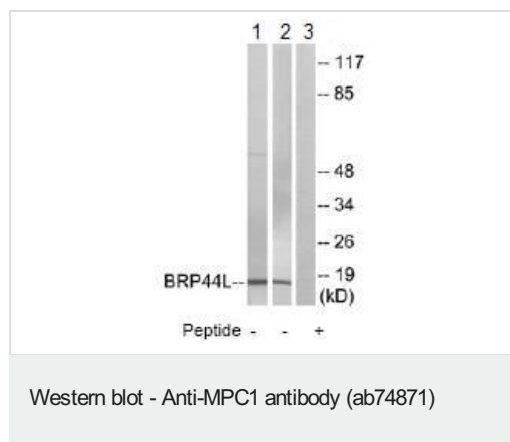
Sequence similarities

Belongs to the mitochondrial pyruvate carrier (MPC) (TC 2.A.105) family.

Cellular localization

Mitochondrion inner membrane.

Images



All lanes : Anti-MPC1 antibody (ab74871) at 1/500 dilution

Lane 1 : extracts from COLO cells

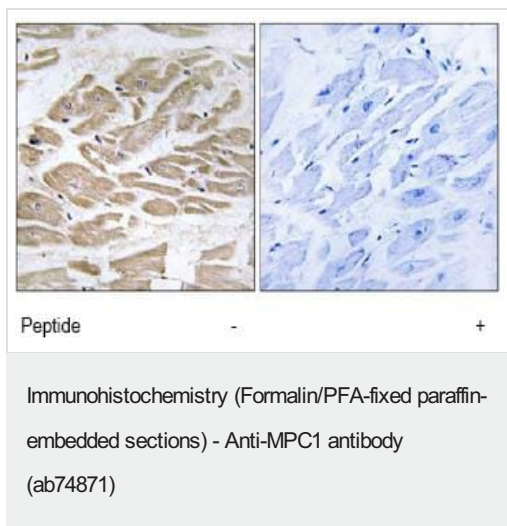
Lane 2 : extracts from HeLa cells

Lane 3 : extracts from COLO cells with immunizing peptide at 10 µg

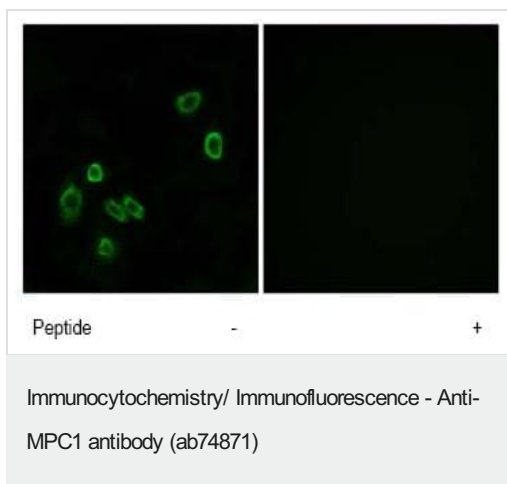
Lysates/proteins at 20 µg per lane.

Predicted band size: 12 kDa

Observed band size: 12 kDa



ab74871, at a 1/50 dilution, staining MPC1 in paraffin embedded human heart tissue sections by Immunohistochemistry in the absence (left image) or presence (right image) of the immunizing peptide.



ab74871, at a 1/500 dilution, staining MPC1 in A549 cells by Immunofluorescence in the absence (left image) or presence (right image) of the immunizing peptide.

Please note: All products are "FOR RESEARCH USE ONLY. NOT FOR USE IN DIAGNOSTIC PROCEDURES"

Our Abpromise to you: Quality guaranteed and expert technical support

- Replacement or refund for products not performing as stated on the datasheet
- Valid for 12 months from date of delivery
- Response to your inquiry within 24 hours
- We provide support in Chinese, English, French, German, Japanese and Spanish
- Extensive multi-media technical resources to help you
- We investigate all quality concerns to ensure our products perform to the highest standards

If the product does not perform as described on this datasheet, we will offer a refund or replacement. For full details of the Abpromise, please visit <https://www.abcam.com/abpromise> or contact our technical team.

Terms and conditions

- Guarantee only valid for products bought direct from Abcam or one of our authorized distributors