



Product datasheet

Anti-MPP5/Pals1 antibody ab20511

★★★★★ [1 Abreviews](#) [1 Image](#)

Overview

Product name	Anti-MPP5/Pals1 antibody
Description	Goat polyclonal to MPP5/Pals1
Host species	Goat
Tested applications	Suitable for: IHC-P, WB
Species reactivity	Reacts with: Human
Immunogen	Synthetic peptide corresponding to Human MPP5/Pals1 aa 174-187 (N terminal). Sequence: NKASPPFPLISNAQ <div>  Run BLAST with  Run BLAST with </div>
Positive control	Human Brain lysate
General notes	<p>The Life Science industry has been in the grips of a reproducibility crisis for a number of years. Abcam is leading the way in addressing this with our range of recombinant monoclonal antibodies and knockout edited cell lines for gold-standard validation. Please check that this product meets your needs before purchasing.</p> <p>If you have any questions, special requirements or concerns, please send us an inquiry and/or contact our Support team ahead of purchase. Recommended alternatives for this product can be found below, along with publications, customer reviews and Q&As</p>

Properties

Form	Liquid
Storage instructions	Shipped at 4°C. Upon delivery aliquot and store at -20°C. Avoid freeze / thaw cycles.
Storage buffer	pH: 7.30 Preservative: 0.02% Sodium azide Constituents: Tris buffered saline, 0.5% BSA
Purity	Immunogen affinity purified
Clonality	Polyclonal
Isotype	IgG

Applications

The Abpromise guarantee

Our **Abpromise guarantee** covers the use of ab20511 in the following tested applications.

The application notes include recommended starting dilutions; optimal dilutions/concentrations should be determined by the end user.

Application	Abreviews	Notes
IHC-P		Use a concentration of 5 µg/ml.
WB		Use a concentration of 1 - 3 µg/ml. Detects a band of approximately 75 kDa (predicted molecular weight: 77 kDa). 1 hour primary incubation is recommended for this product.

Target

Function

May play a role in tight junctions biogenesis and in the establishment of cell polarity in epithelial cells. May modulate SC6A1/GAT1-mediated GABA uptake by stabilizing the transporter. Required for localization of EZR to the apical membrane of parietal cells and may play a role in the dynamic remodeling of the apical cytoskeleton.

Tissue specificity

Expressed in the retina (at protein level).

Sequence similarities

Belongs to the MAGUK family.
Contains 1 guanylate kinase-like domain.
Contains 2 L27 domains.
Contains 1 PDZ (DHR) domain.
Contains 1 SH3 domain.

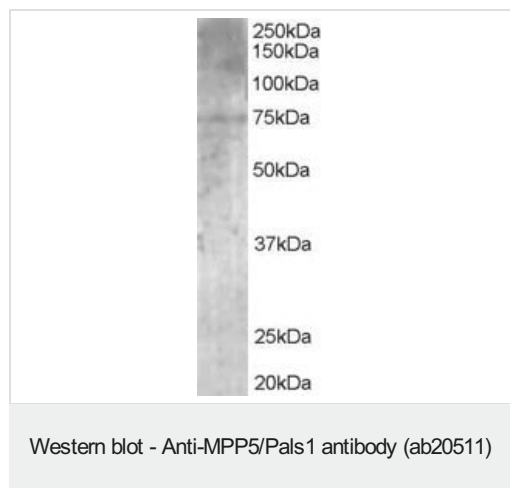
Domain

The L27 domain 1 functions in targeting to the tight junctions by binding to INADL.
The PDZ domain binds to the C-terminus of SC6A1.

Cellular localization

Cell membrane. Endomembrane system. Cell junction > tight junction. Localized to the tight junctions of epithelial cells and a subset of intracellular vesicles. In the retina, detected at the outer limiting membrane (OLM), apical to the adherens junction (AJ), where it colocalizes with CRB1. Colocalizes with MPP1 in the retina at the outer limiting membrane (OLM). Localized to the Purkinje cell body and axon.

Images



Anti-MPP5/Pals1 antibody (ab20511) at 1 µg/ml + Human brain lysate at 35 µg

Developed using the ECL technique.

Predicted band size: 77 kDa

Observed band size: 75 kDa

Please note: All products are "FOR RESEARCH USE ONLY. NOT FOR USE IN DIAGNOSTIC PROCEDURES"

Our Abpromise to you: Quality guaranteed and expert technical support

- Replacement or refund for products not performing as stated on the datasheet
- Valid for 12 months from date of delivery
- Response to your inquiry within 24 hours

- We provide support in Chinese, English, French, German, Japanese and Spanish
- Extensive multi-media technical resources to help you
- We investigate all quality concerns to ensure our products perform to the highest standards

If the product does not perform as described on this datasheet, we will offer a refund or replacement. For full details of the Abpromise, please visit <https://www.abcam.com/abpromise> or contact our technical team.

Terms and conditions

- Guarantee only valid for products bought direct from Abcam or one of our authorized distributors