




## Product datasheet

### Anti-MPP5/Pals1 antibody ab217068

2 Images

#### Overview

<b>Product name</b>	Anti-MPP5/Pals1 antibody
<b>Description</b>	Rabbit polyclonal to MPP5/Pals1
<b>Host species</b>	Rabbit
<b>Tested applications</b>	<b>Suitable for:</b> WB, IP
<b>Species reactivity</b>	<b>Reacts with:</b> Human <b>Predicted to work with:</b> Mouse, Orangutan 
<b>Immunogen</b>	Synthetic peptide within Human MPP5/Pals1 aa 600 to the C-terminus. The exact immunogen sequence used to generate this antibody is proprietary information. If additional detail on the immunogen is needed to determine the suitability of the antibody for your needs, please <b><u>contact</u></b> our Scientific Support team to discuss your requirements. Database link: <a href="#">Q8N3R9</a>  <a href="#">Run BLAST with</a>  <a href="#">Run BLAST with</a>
<b>Positive control</b>	HeLa, 293T and Jurkat whole cell lysate ( <a href="#">ab7899</a> ).
<b>General notes</b>	<p>The Life Science industry has been in the grips of a reproducibility crisis for a number of years. Abcam is leading the way in addressing this with our range of recombinant monoclonal antibodies and knockout edited cell lines for gold-standard validation. Please check that this product meets your needs before purchasing.</p> <p>If you have any questions, special requirements or concerns, please send us an inquiry and/or contact our Support team ahead of purchase. Recommended alternatives for this product can be found below, along with publications, customer reviews and Q&amp;As</p>

#### Properties

<b>Form</b>	Liquid
<b>Storage instructions</b>	Shipped at 4°C. Store at +4°C short term (1-2 weeks). Upon delivery aliquot. Store at -20°C long term. Avoid freeze / thaw cycle.
<b>Storage buffer</b>	pH: 7 Preservative: 0.09% Sodium azide Constituent: 99% Tris citrate/phosphate  pH 7 to 8

<b>Purity</b>	Immunogen affinity purified
<b>Purification notes</b>	ab217068 was affinity purified using an epitope specific to MPP5/Pals1 immobilized on solid support.
<b>Clonality</b>	Polyclonal
<b>Isotype</b>	IgG

## Applications

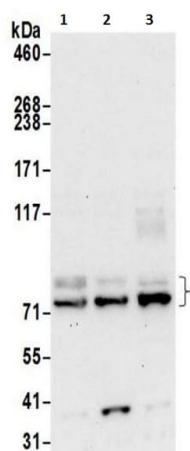
**The Abpromise guarantee** Our **Abpromise guarantee** covers the use of ab217068 in the following tested applications. The application notes include recommended starting dilutions; optimal dilutions/concentrations should be determined by the end user.

Application	Abreviews	Notes
<b>WB</b>		1/2000 - 1/10000. Predicted molecular weight: 77 kDa.
<b>IP</b>		Use at 2-10 µg/mg of lysate.

## Target

<b>Function</b>	May play a role in tight junctions biogenesis and in the establishment of cell polarity in epithelial cells. May modulate SC6A1/GAT1-mediated GABA uptake by stabilizing the transporter. Required for localization of EZR to the apical membrane of parietal cells and may play a role in the dynamic remodeling of the apical cytoskeleton.
<b>Tissue specificity</b>	Expressed in the retina (at protein level).
<b>Sequence similarities</b>	Belongs to the MAGUK family. Contains 1 guanylate kinase-like domain. Contains 2 L27 domains. Contains 1 PDZ (DHR) domain. Contains 1 SH3 domain.
<b>Domain</b>	The L27 domain 1 functions in targeting to the tight junctions by binding to INADL. The PDZ domain binds to the C-terminus of SC6A1.
<b>Cellular localization</b>	Cell membrane. Endomembrane system. Cell junction > tight junction. Localized to the tight junctions of epithelial cells and a subset of intracellular vesicles. In the retina, detected at the outer limiting membrane (OLM), apical to the adherens junction (AJ), where it colocalizes with CRB1. Colocalizes with MPP1 in the retina at the outer limiting membrane (OLM). Localized to the Purkinje cell body and axon.

## Images



Western blot - Anti-MPP5/Pals1 antibody  
(ab217068)

**All lanes :** Anti-MPP5/Pals1 antibody (ab217068) at 0.1 µg/ml

**Lane 1 :** HeLa whole cell lysate

**Lane 2 :** 293T whole cell lysate

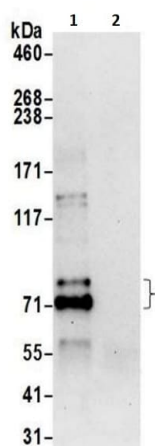
**Lane 3 :** Jurkat whole cell lysate

Lysates/proteins at 50 µg per lane.

Developed using the ECL technique.

**Predicted band size:** 77 kDa

**Exposure time:** 30 seconds



Immunoprecipitation - Anti-MPP5/Pals1 antibody  
(ab217068)

Detection of MPP5/Pals1 in immunoprecipitates of 293T whole cell lysate prepared using NETN lysis buffer (0.5 or 1 mg for IP, 20% of IP loaded). ab217068 was used at 6 µg/mg lysate for IP (Lane 1), and at 1 µg/ml for subsequent Western blot detection. Lane 2 represents control IgG IP. Detection: chemiluminescence with an exposure time of 30 seconds.

**Please note:** All products are "FOR RESEARCH USE ONLY. NOT FOR USE IN DIAGNOSTIC PROCEDURES"

## Our Abpromise to you: Quality guaranteed and expert technical support

- Replacement or refund for products not performing as stated on the datasheet
- Valid for 12 months from date of delivery
- Response to your inquiry within 24 hours
- We provide support in Chinese, English, French, German, Japanese and Spanish

- Extensive multi-media technical resources to help you
- We investigate all quality concerns to ensure our products perform to the highest standards

If the product does not perform as described on this datasheet, we will offer a refund or replacement. For full details of the Abpromise, please visit <https://www.abcam.com/abpromise> or contact our technical team.

#### **Terms and conditions**

---

- Guarantee only valid for products bought direct from Abcam or one of our authorized distributors